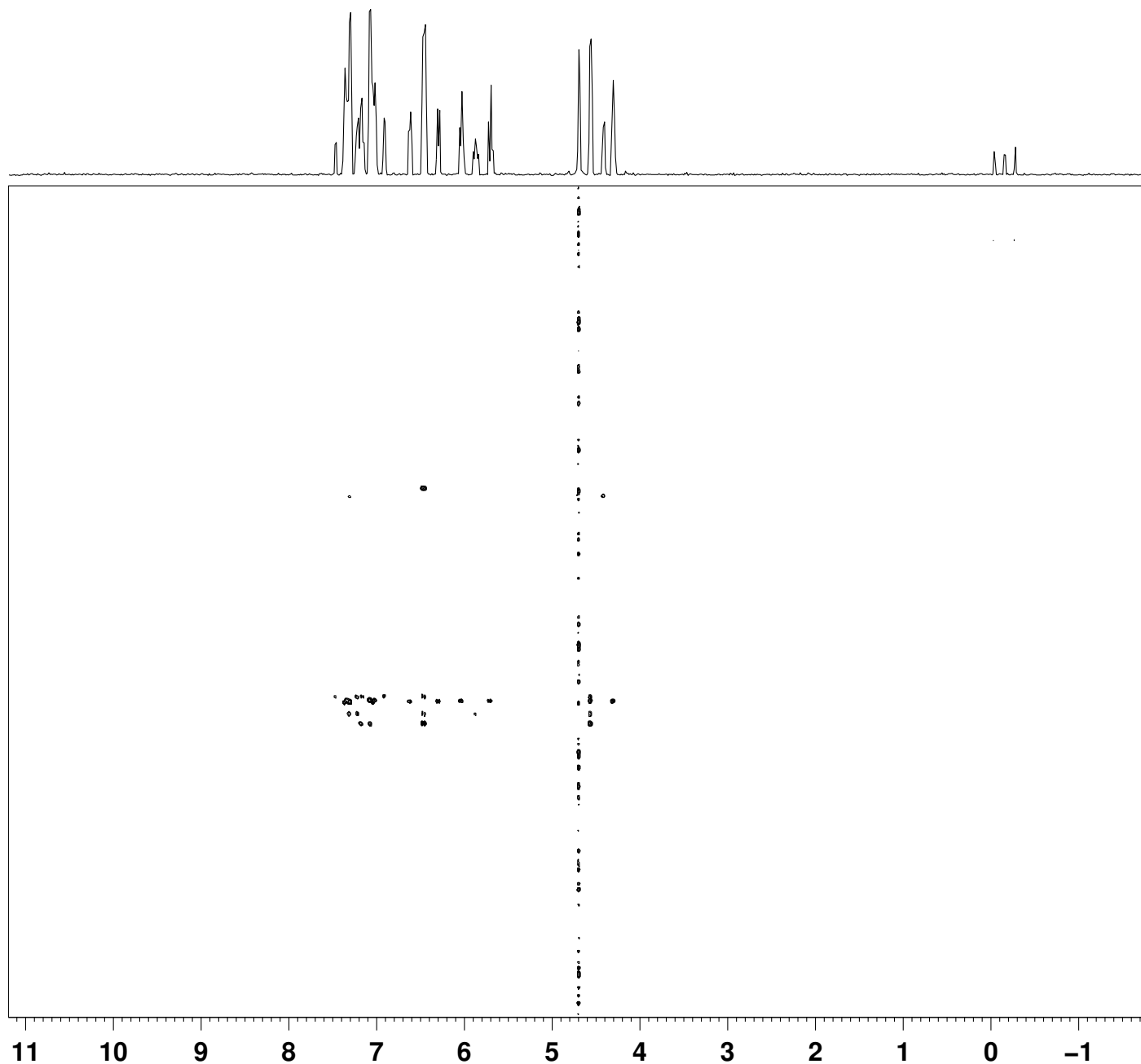
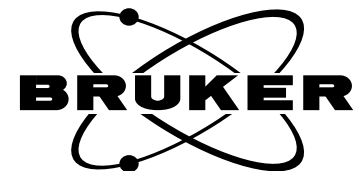


CQ-02510-D2O-HMBC-271009-298 K-500 MHz  
HMBC-mmcd-clem D2O /opt/topspin ravi {1 D3 - 139}



NAME CQ-02510-D2O-271009  
EXPNO 8  
PROCNO 1  
Date\_ 20091101  
Time 9.51  
INSTRUM spect  
PROBHD 5 mm CPTXO 13C  
PULPROG hmbcgpndqf  
TD 4096  
SOLVENT D2O  
NS 8  
DS 32  
SWH 6493.506 Hz  
FIDRES 1.585329 Hz  
AQ 0.3154420 sec  
RG 28.5  
DW 77.000 usec  
DE 30.00 usec  
TE 298.1 K  
CNST13 8.0000000  
D0 0.00000300 sec  
D1 1.50000000 sec  
D6 0.06250000 sec  
D16 0.00020000 sec  
IN0 0.00001685 sec  
  
===== CHANNEL f1 =====  
NUC1 1H  
P1 15.70 usec  
P2 31.40 usec  
PL1 0.90 dB  
PL1W 21.64242172 W  
SFO1 499.8423492 MHz  
  
===== CHANNEL f2 =====  
NUC2 13C  
P3 10.00 usec  
PL2 3.00 dB  
PL2W 36.25705338 W  
SFO2 125.6974365 MHz  
  
===== GRADIENT CHANNEL =====  
GPNAM1 SINE.100  
GPNAM2 SINE.100  
GPNAM3 SINE.100  
GPZ1 50.00 %  
GPZ2 30.00 %  
GPZ3 40.10 %  
P16 1000.00 usec  
ND0 2  
TD 256  
SFO1 125.6974 MHz  
FIDRES 115.877327 Hz  
SW 236.000 ppm  
FnMODE QF  
SI 1024  
SF 499.8400000 MHz  
WDW SINE  
SSB 0  
LB 0.00 Hz  
GB 0  
PC 1.40  
SI 1024  
MC2 QF  
SF 125.6848680 MHz  
WDW SINE  
SSB 0  
LB 0.00 Hz  
GB 0