



# Full wwPDB X-ray Structure Validation Report ⓘ

Jun 18, 2024 – 07:24 PM EDT

PDB ID : 4KLY  
Title : Crystal structure of a blue-light absorbing proteorhodopsin mutant D97N from HOT75  
Authors : Ran, T.; Ozorowski, G.; Gao, Y.; Wang, W.; Luecke, H.  
Deposited on : 2013-05-07  
Resolution : 2.70 Å(reported)

This is a Full wwPDB X-ray Structure Validation Report for a publicly released PDB entry.

We welcome your comments at [validation@mail.wwpdb.org](mailto:validation@mail.wwpdb.org)

A user guide is available at

<https://www.wwpdb.org/validation/2017/XrayValidationReportHelp>

with specific help available everywhere you see the ⓘ symbol.

The types of validation reports are described at

<http://www.wwpdb.org/validation/2017/FAQs#types>.

---

The following versions of software and data (see [references ⓘ](#)) were used in the production of this report:

MolProbity	:	4.02b-467
Mogul	:	2022.3.0, CSD as543be (2022)
Xtriage (Phenix)	:	1.20.1
EDS	:	2.37.1
buster-report	:	1.1.7 (2018)
Percentile statistics	:	20191225.v01 (using entries in the PDB archive December 25th 2019)
Refmac	:	5.8.0158
CCP4	:	7.0.044 (Gargrove)
Ideal geometry (proteins)	:	Engh & Huber (2001)
Ideal geometry (DNA, RNA)	:	Parkinson et al. (1996)
Validation Pipeline (wwPDB-VP)	:	2.37.1

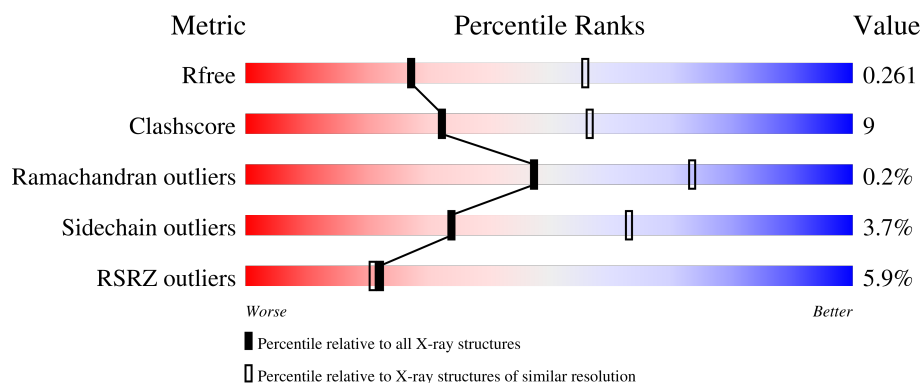
# 1 Overall quality at a glance

The following experimental techniques were used to determine the structure:

*X-RAY DIFFRACTION*

The reported resolution of this entry is 2.70 Å.

Percentile scores (ranging between 0-100) for global validation metrics of the entry are shown in the following graphic. The table shows the number of entries on which the scores are based.



Metric	Whole archive (#Entries)	Similar resolution (#Entries, resolution range(Å))
$R_{free}$	130704	2808 (2.70-2.70)
Clashscore	141614	3122 (2.70-2.70)
Ramachandran outliers	138981	3069 (2.70-2.70)
Sidechain outliers	138945	3069 (2.70-2.70)
RSRZ outliers	127900	2737 (2.70-2.70)

The table below summarises the geometric issues observed across the polymeric chains and their fit to the electron density. The red, orange, yellow and green segments of the lower bar indicate the fraction of residues that contain outliers for  $\geq 3$ , 2, 1 and 0 types of geometric quality criteria respectively. A grey segment represents the fraction of residues that are not modelled. The numeric value for each fraction is indicated below the corresponding segment, with a dot representing fractions  $\leq 5\%$ . The upper red bar (where present) indicates the fraction of residues that have poor fit to the electron density. The numeric value is given above the bar.

Mol	Chain	Length	Quality of chain
1	A	259	<div> <div>5%</div> <div> <div></div> <div>80%</div> <div>7%</div> <div>12%</div> </div> </div>
1	B	259	<div> <div>5%</div> <div> <div></div> <div>74%</div> <div>14%</div> <div>10%</div> </div> </div>
1	C	259	<div> <div>5%</div> <div> <div></div> <div>77%</div> <div>12%</div> <div>11%</div> </div> </div>
1	D	259	<div> <div>5%</div> <div> <div></div> <div>64%</div> <div>19%</div> <div>15%</div> </div> </div>
1	E	259	<div> <div>4%</div> <div> <div></div> <div>71%</div> <div>15%</div> <div>13%</div> </div> </div>

The following table lists non-polymeric compounds, carbohydrate monomers and non-standard residues in protein, DNA, RNA chains that are outliers for geometric or electron-density-fit criteria:

Mol	Type	Chain	Res	Chirality	Geometry	Clashes	Electron density
2	RET	B	301	-	-	X	-
2	RET	C	301	-	-	X	-

## 2 Entry composition

There are 3 unique types of molecules in this entry. The entry contains 8837 atoms, of which 0 are hydrogens and 0 are deuteriums.

In the tables below, the ZeroOcc column contains the number of atoms modelled with zero occupancy, the AltConf column contains the number of residues with at least one atom in alternate conformation and the Trace column contains the number of residues modelled with at most 2 atoms.

- Molecule 1 is a protein called Blue-light absorbing proteorhodopsin.

Mol	Chain	Residues	Atoms						ZeroOcc	AltConf	Trace
1	A	228	Total	C	N	O	S	Se	0	0	0
			1745	1162	267	305	1	10			
1	B	232	Total	C	N	O	S	Se	0	0	0
			1780	1184	275	310	1	10			
1	C	230	Total	C	N	O	S	Se	0	0	0
			1760	1172	269	308	1	10			
1	D	221	Total	C	N	O	S	Se	0	0	0
			1702	1137	259	296		10			
1	E	226	Total	C	N	O	S	Se	0	0	0
			1737	1158	265	303	1	10			

There are 45 discrepancies between the modelled and reference sequences:

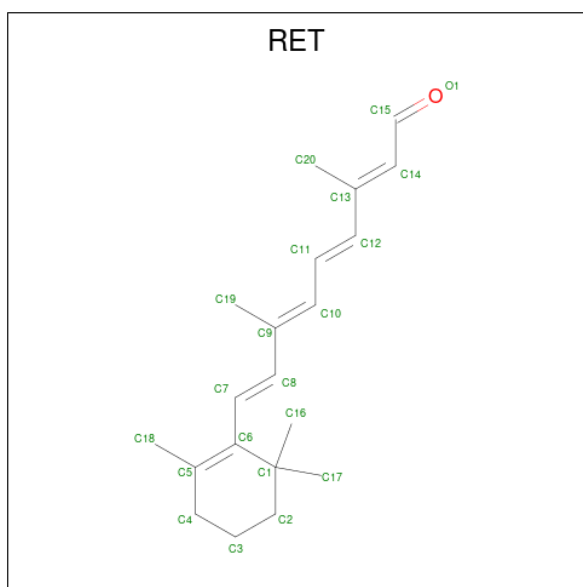
Chain	Residue	Modelled	Actual	Comment	Reference
A	97	ASN	ASP	ENGINEERED MUTATION	UNP Q9AFF7
A	251	LEU	-	EXPRESSION TAG	UNP Q9AFF7
A	252	GLU	-	EXPRESSION TAG	UNP Q9AFF7
A	253	HIS	-	EXPRESSION TAG	UNP Q9AFF7
A	254	HIS	-	EXPRESSION TAG	UNP Q9AFF7
A	255	HIS	-	EXPRESSION TAG	UNP Q9AFF7
A	256	HIS	-	EXPRESSION TAG	UNP Q9AFF7
A	257	HIS	-	EXPRESSION TAG	UNP Q9AFF7
A	258	HIS	-	EXPRESSION TAG	UNP Q9AFF7
B	97	ASN	ASP	ENGINEERED MUTATION	UNP Q9AFF7
B	251	LEU	-	EXPRESSION TAG	UNP Q9AFF7
B	252	GLU	-	EXPRESSION TAG	UNP Q9AFF7
B	253	HIS	-	EXPRESSION TAG	UNP Q9AFF7
B	254	HIS	-	EXPRESSION TAG	UNP Q9AFF7
B	255	HIS	-	EXPRESSION TAG	UNP Q9AFF7
B	256	HIS	-	EXPRESSION TAG	UNP Q9AFF7
B	257	HIS	-	EXPRESSION TAG	UNP Q9AFF7
B	258	HIS	-	EXPRESSION TAG	UNP Q9AFF7
C	97	ASN	ASP	ENGINEERED MUTATION	UNP Q9AFF7

*Continued on next page...*

*Continued from previous page...*

Chain	Residue	Modelled	Actual	Comment	Reference
C	251	LEU	-	EXPRESSION TAG	UNP Q9AFF7
C	252	GLU	-	EXPRESSION TAG	UNP Q9AFF7
C	253	HIS	-	EXPRESSION TAG	UNP Q9AFF7
C	254	HIS	-	EXPRESSION TAG	UNP Q9AFF7
C	255	HIS	-	EXPRESSION TAG	UNP Q9AFF7
C	256	HIS	-	EXPRESSION TAG	UNP Q9AFF7
C	257	HIS	-	EXPRESSION TAG	UNP Q9AFF7
C	258	HIS	-	EXPRESSION TAG	UNP Q9AFF7
D	97	ASN	ASP	ENGINEERED MUTATION	UNP Q9AFF7
D	251	LEU	-	EXPRESSION TAG	UNP Q9AFF7
D	252	GLU	-	EXPRESSION TAG	UNP Q9AFF7
D	253	HIS	-	EXPRESSION TAG	UNP Q9AFF7
D	254	HIS	-	EXPRESSION TAG	UNP Q9AFF7
D	255	HIS	-	EXPRESSION TAG	UNP Q9AFF7
D	256	HIS	-	EXPRESSION TAG	UNP Q9AFF7
D	257	HIS	-	EXPRESSION TAG	UNP Q9AFF7
D	258	HIS	-	EXPRESSION TAG	UNP Q9AFF7
E	97	ASN	ASP	ENGINEERED MUTATION	UNP Q9AFF7
E	251	LEU	-	EXPRESSION TAG	UNP Q9AFF7
E	252	GLU	-	EXPRESSION TAG	UNP Q9AFF7
E	253	HIS	-	EXPRESSION TAG	UNP Q9AFF7
E	254	HIS	-	EXPRESSION TAG	UNP Q9AFF7
E	255	HIS	-	EXPRESSION TAG	UNP Q9AFF7
E	256	HIS	-	EXPRESSION TAG	UNP Q9AFF7
E	257	HIS	-	EXPRESSION TAG	UNP Q9AFF7
E	258	HIS	-	EXPRESSION TAG	UNP Q9AFF7

- Molecule 2 is RETINAL (three-letter code: RET) (formula: C<sub>20</sub>H<sub>28</sub>O).



Mol	Chain	Residues	Atoms	ZeroOcc	AltConf
2	A	1	Total C 20 20	0	0
2	B	1	Total C 20 20	0	0
2	C	1	Total C 20 20	0	0
2	D	1	Total C 20 20	0	0
2	E	1	Total C 20 20	0	0

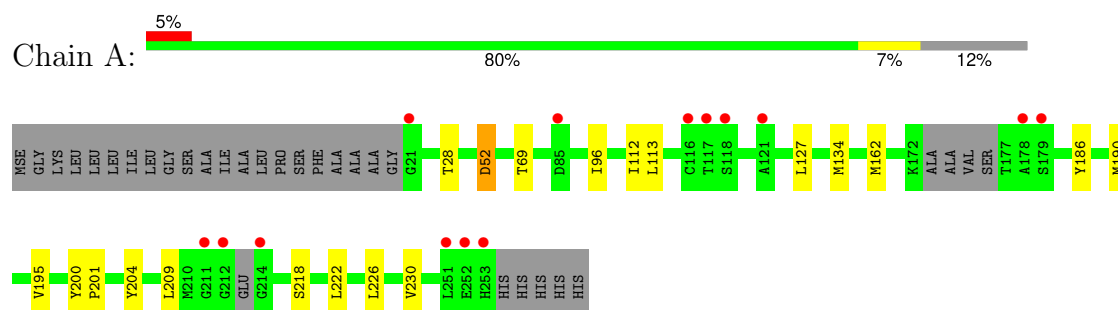
- Molecule 3 is water.

Mol	Chain	Residues	Atoms	ZeroOcc	AltConf
3	A	1	Total O 1 1	0	0
3	B	3	Total O 3 3	0	0
3	C	3	Total O 3 3	0	0
3	D	3	Total O 3 3	0	0
3	E	3	Total O 3 3	0	0

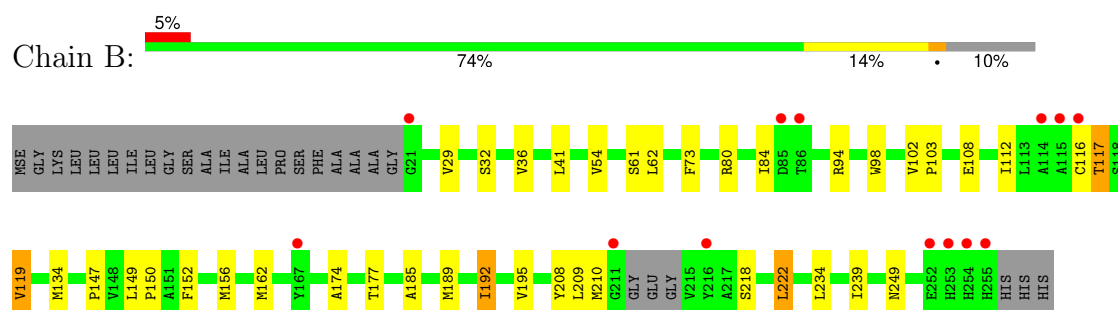
### 3 Residue-property plots [i](#)

These plots are drawn for all protein, RNA, DNA and oligosaccharide chains in the entry. The first graphic for a chain summarises the proportions of the various outlier classes displayed in the second graphic. The second graphic shows the sequence view annotated by issues in geometry and electron density. Residues are color-coded according to the number of geometric quality criteria for which they contain at least one outlier: green = 0, yellow = 1, orange = 2 and red = 3 or more. A red dot above a residue indicates a poor fit to the electron density ( $RSRZ > 2$ ). Stretches of 2 or more consecutive residues without any outlier are shown as a green connector. Residues present in the sample, but not in the model, are shown in grey.

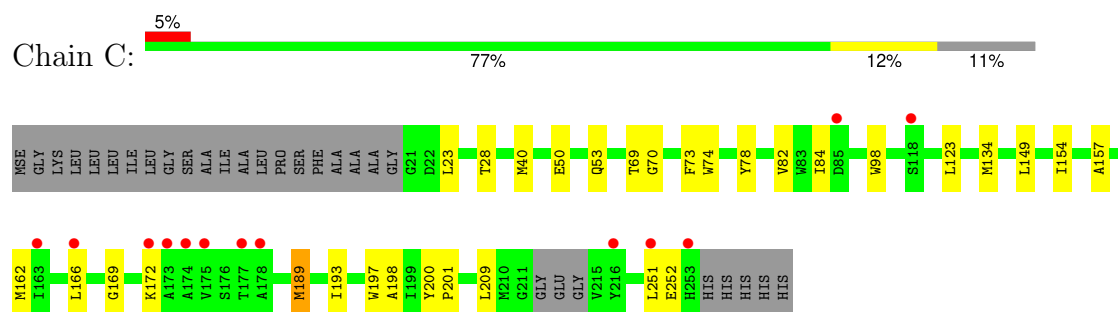
- Molecule 1: Blue-light absorbing proteorhodopsin



- Molecule 1: Blue-light absorbing proteorhodopsin

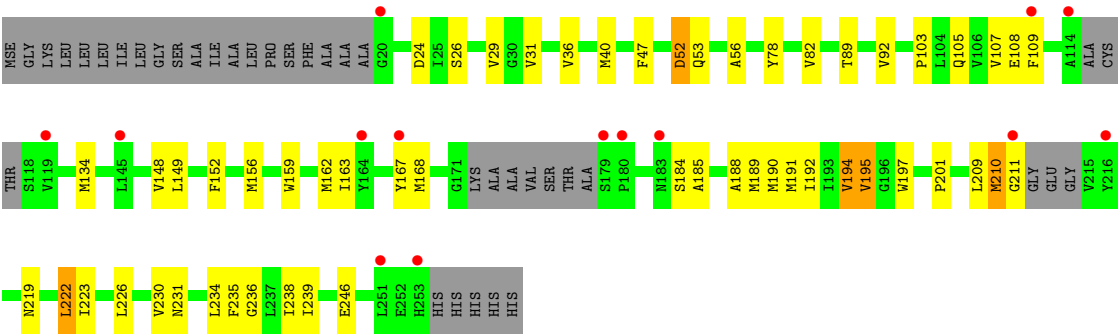


- Molecule 1: Blue-light absorbing proteorhodopsin

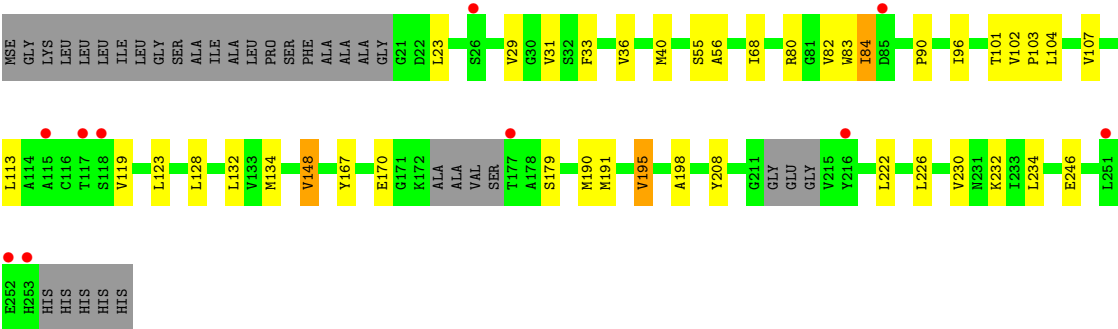


- Molecule 1: Blue-light absorbing proteorhodopsin





● Molecule 1: Blue-light absorbing proteorhodopsin





## 4 Data and refinement statistics

Property	Value	Source
Space group	P 21 21 2	Depositor
Cell constants a, b, c, $\alpha$ , $\beta$ , $\gamma$	162.10Å 168.80Å 65.70Å 90.00° 90.00° 90.00°	Depositor
Resolution (Å)	19.87 – 2.70 19.87 – 2.70	Depositor EDS
% Data completeness (in resolution range)	99.2 (19.87-2.70) 99.6 (19.87-2.70)	Depositor EDS
$R_{merge}$	0.23	Depositor
$R_{sym}$	(Not available)	Depositor
$\langle I/\sigma(I) \rangle$ <sup>1</sup>	2.57 (at 2.71Å)	Xtriage
Refinement program	REFMAC 5.7.0032	Depositor
R, $R_{free}$	0.209 , 0.261 0.208 , 0.261	Depositor DCC
$R_{free}$ test set	2547 reflections (5.09%)	wwPDB-VP
Wilson B-factor (Å <sup>2</sup> )	63.3	Xtriage
Anisotropy	0.084	Xtriage
Bulk solvent $k_{sol}$ (e/Å <sup>3</sup> ), $B_{sol}$ (Å <sup>2</sup> )	0.35 , 69.2	EDS
L-test for twinning <sup>2</sup>	$\langle  L  \rangle = 0.50$ , $\langle L^2 \rangle = 0.33$	Xtriage
Estimated twinning fraction	0.009 for k,h,-l	Xtriage
$F_o, F_c$ correlation	0.94	EDS
Total number of atoms	8837	wwPDB-VP
Average B, all atoms (Å <sup>2</sup> )	71.0	wwPDB-VP

Xtriage's analysis on translational NCS is as follows: *The largest off-origin peak in the Patterson function is 4.95% of the height of the origin peak. No significant pseudotranslation is detected.*

<sup>1</sup>Intensities estimated from amplitudes.

<sup>2</sup>Theoretical values of  $\langle |L| \rangle$ ,  $\langle L^2 \rangle$  for acentric reflections are 0.5, 0.333 respectively for untwinned datasets, and 0.375, 0.2 for perfectly twinned datasets.

## 5 Model quality

### 5.1 Standard geometry

Bond lengths and bond angles in the following residue types are not validated in this section: RET

The Z score for a bond length (or angle) is the number of standard deviations the observed value is removed from the expected value. A bond length (or angle) with  $|Z| > 5$  is considered an outlier worth inspection. RMSZ is the root-mean-square of all Z scores of the bond lengths (or angles).

Mol	Chain	Bond lengths		Bond angles	
		RMSZ	# $ Z  > 5$	RMSZ	# $ Z  > 5$
1	A	0.61	0/1781	0.69	1/2412 (0.0%)
1	B	0.58	0/1819	0.69	0/2467
1	C	0.58	0/1797	0.71	0/2437
1	D	0.57	0/1737	0.68	1/2351 (0.0%)
1	E	0.58	0/1773	0.71	0/2402
All	All	0.58	0/8907	0.70	2/12069 (0.0%)

There are no bond length outliers.

All (2) bond angle outliers are listed below:

Mol	Chain	Res	Type	Atoms	Z	Observed(°)	Ideal(°)
1	D	52	ASP	CB-CG-OD1	-5.51	113.34	118.30
1	A	52	ASP	CB-CG-OD1	-5.37	113.46	118.30

There are no chirality outliers.

There are no planarity outliers.

### 5.2 Too-close contacts

In the following table, the Non-H and H(model) columns list the number of non-hydrogen atoms and hydrogen atoms in the chain respectively. The H(added) column lists the number of hydrogen atoms added and optimized by MolProbity. The Clashes column lists the number of clashes within the asymmetric unit, whereas Symm-Clashes lists symmetry-related clashes.

Mol	Chain	Non-H	H(model)	H(added)	Clashes	Symm-Clashes
1	A	1745	0	1750	11	0
1	B	1780	0	1783	34	0
1	C	1760	0	1769	31	0
1	D	1702	0	1703	38	0

*Continued on next page...*

*Continued from previous page...*

Mol	Chain	Non-H	H(model)	H(added)	Clashes	Symm-Clashes
1	E	1737	0	1744	28	0
2	A	20	0	27	6	0
2	B	20	0	27	9	0
2	C	20	0	27	10	0
2	D	20	0	27	4	0
2	E	20	0	27	4	0
3	A	1	0	0	0	0
3	B	3	0	0	1	0
3	C	3	0	0	0	0
3	D	3	0	0	0	0
3	E	3	0	0	0	0
All	All	8837	0	8884	156	0

The all-atom clashscore is defined as the number of clashes found per 1000 atoms (including hydrogen atoms). The all-atom clashscore for this structure is 9.

All (156) close contacts within the same asymmetric unit are listed below, sorted by their clash magnitude.

Atom-1	Atom-2	Interatomic distance (Å)	Clash overlap (Å)
1:E:101:THR:HG21	1:E:232:LYS:NZ	1.79	0.97
1:B:152:PHE:CZ	1:B:156:MSE:HE1	2.04	0.93
2:C:301:RET:H171	2:C:301:RET:H8	1.51	0.89
1:C:40:MSE:HE2	1:C:69:THR:HA	1.54	0.88
1:B:94:ARG:NH2	3:B:406:HOH:O	2.08	0.83
1:D:134:MSE:SE	2:D:301:RET:H192	2.32	0.79
1:B:134:MSE:SE	2:B:301:RET:H192	2.34	0.78
1:B:29:VAL:HG22	1:B:222:LEU:HD12	1.67	0.77
2:D:301:RET:H171	2:D:301:RET:H8	1.66	0.76
1:E:68:ILE:HG23	1:E:101:THR:HG23	1.67	0.75
2:A:301:RET:H8	2:A:301:RET:H161	1.70	0.74
1:D:162:MSE:HE1	1:D:197:TRP:HZ3	1.53	0.71
1:C:40:MSE:HE2	1:C:69:THR:CA	2.22	0.70
1:C:40:MSE:CE	1:C:69:THR:HA	2.22	0.69
1:B:116:CYS:O	1:B:177:THR:OG1	2.10	0.68
2:B:301:RET:H8	2:B:301:RET:H161	1.76	0.67
1:D:162:MSE:HE1	1:D:197:TRP:CZ3	2.30	0.67
1:E:29:VAL:HG22	1:E:83:TRP:CE2	2.31	0.66
1:A:134:MSE:SE	2:A:301:RET:H192	2.46	0.66
1:E:101:THR:HG21	2:E:301:RET:C15	2.27	0.65
1:E:134:MSE:SE	2:E:301:RET:H192	2.46	0.65
1:B:108:GLU:HG2	1:B:239:ILE:HD11	1.78	0.65

*Continued on next page...*

*Continued from previous page...*

Atom-1	Atom-2	Interatomic distance (Å)	Clash overlap (Å)
1:C:40:MSE:HE1	1:C:69:THR:HG22	1.78	0.64
1:B:152:PHE:CE1	1:B:156:MSE:HE1	2.33	0.63
1:C:154:ILE:O	1:C:157:ALA:HB3	1.98	0.63
1:B:192:ILE:HD11	1:B:234:LEU:HB3	1.81	0.62
1:C:134:MSE:SE	2:C:301:RET:H192	2.49	0.62
2:E:301:RET:H161	2:E:301:RET:H8	1.80	0.62
1:D:103:PRO:O	1:D:107:VAL:HG23	2.00	0.62
1:E:226:LEU:O	1:E:230:VAL:HG23	2.02	0.60
1:D:29:VAL:HG22	1:D:222:LEU:HD13	1.84	0.59
1:D:219:ASN:O	1:D:223:ILE:HG12	2.02	0.59
1:A:134:MSE:CE	2:A:301:RET:H192	2.32	0.59
1:D:109:PHE:CZ	1:D:189:MSE:HB3	2.39	0.58
1:B:134:MSE:CE	2:B:301:RET:H192	2.34	0.57
2:C:301:RET:H171	2:C:301:RET:C8	2.24	0.57
1:C:252:GLU:N	1:C:252:GLU:OE1	2.38	0.56
1:C:40:MSE:CE	1:C:69:THR:HG22	2.35	0.56
1:D:226:LEU:O	1:D:230:VAL:HG23	2.06	0.56
1:D:152:PHE:CZ	1:D:156:MSE:HE2	2.41	0.55
1:E:148:VAL:HG21	1:E:208:TYR:HB3	1.89	0.55
2:B:301:RET:H171	2:B:301:RET:C8	2.36	0.55
1:D:185:ALA:O	1:D:189:MSE:HG2	2.07	0.55
1:E:128:LEU:O	1:E:132:LEU:HG	2.07	0.55
1:A:186:TYR:O	1:A:190:MSE:HG2	2.06	0.55
1:C:201:PRO:HG3	2:C:301:RET:H183	1.88	0.55
1:E:104:LEU:O	1:E:107:VAL:HG22	2.07	0.54
1:B:41:LEU:HD13	1:B:73:PHE:CE1	2.43	0.54
1:C:50:GLU:OE2	1:C:53:GLN:HG3	2.08	0.54
1:E:29:VAL:HG22	1:E:83:TRP:NE1	2.22	0.54
1:D:31:VAL:HG13	1:E:96:ILE:HD11	1.89	0.53
2:B:301:RET:H8	2:B:301:RET:H171	1.89	0.53
1:D:159:TRP:HA	1:D:162:MSE:HE2	1.90	0.53
1:D:188:ALA:CB	1:D:238:ILE:HG21	2.39	0.53
1:D:192:ILE:HG21	1:D:235:PHE:CD2	2.45	0.51
1:D:230:VAL:O	1:D:234:LEU:HB2	2.11	0.51
1:B:112:ILE:HD13	1:B:189:MSE:HE1	1.94	0.50
1:D:190:MSE:HB3	1:D:191:MSE:HE2	1.93	0.50
1:D:47:PHE:CZ	1:D:236:GLY:HA3	2.47	0.50
1:C:162:MSE:SE	1:C:197:TRP:HZ3	2.44	0.50
1:B:98:TRP:CD1	2:B:301:RET:H14	2.47	0.49
1:A:226:LEU:O	1:A:230:VAL:HG23	2.11	0.49
1:E:119:VAL:O	1:E:119:VAL:HG12	2.12	0.49

*Continued on next page...*

*Continued from previous page...*

Atom-1	Atom-2	Interatomic distance (Å)	Clash overlap (Å)
1:B:29:VAL:HG22	1:B:222:LEU:CD1	2.38	0.49
1:A:127:LEU:HD23	1:A:162:MSE:HB3	1.95	0.48
1:C:166:LEU:HD21	1:C:189:MSE:HE2	1.95	0.48
1:E:113:LEU:HD13	1:E:123:LEU:HD13	1.94	0.48
1:E:230:VAL:O	1:E:234:LEU:HB2	2.13	0.48
1:B:149:LEU:HB3	1:B:150:PRO:HD3	1.96	0.48
1:C:40:MSE:HE3	1:C:40:MSE:HA	1.95	0.48
1:C:40:MSE:CE	1:C:69:THR:CA	2.88	0.48
1:C:53:GLN:HE22	1:D:56:ALA:CB	2.27	0.48
1:D:188:ALA:HB1	1:D:238:ILE:HG21	1.96	0.48
1:B:117:THR:HG21	1:B:174:ALA:HA	1.96	0.48
1:D:197:TRP:HD1	1:D:231:ASN:OD1	1.97	0.48
1:C:23:LEU:HB2	1:D:92:VAL:CG1	2.44	0.48
1:D:189:MSE:O	1:D:192:ILE:HG22	2.14	0.47
1:E:23:LEU:HD11	1:E:80:ARG:HH22	1.79	0.47
1:C:200:TYR:HB2	1:C:201:PRO:HD3	1.97	0.47
1:C:200:TYR:HB3	2:C:301:RET:H161	1.96	0.47
1:D:191:MSE:O	1:D:195:VAL:HG12	2.15	0.46
1:D:109:PHE:CZ	1:D:189:MSE:CB	2.98	0.46
1:C:40:MSE:CE	1:C:69:THR:CB	2.93	0.46
1:C:98:TRP:CD1	2:C:301:RET:H14	2.51	0.46
1:C:74:TRP:O	1:C:78:TYR:HD2	1.98	0.46
1:C:201:PRO:HG3	2:C:301:RET:C18	2.45	0.46
1:D:163:ILE:HD13	1:D:194:VAL:HG22	1.97	0.46
1:B:147:PRO:HB2	1:B:150:PRO:HD2	1.97	0.46
1:E:82:VAL:HG11	1:E:90:PRO:HB3	1.98	0.46
1:C:189:MSE:O	1:C:193:ILE:HG22	2.17	0.45
1:D:167:TYR:HB3	1:D:168:MSE:HE3	1.97	0.45
1:D:191:MSE:O	1:D:195:VAL:CG1	2.64	0.45
1:C:149:LEU:HD13	1:C:209:LEU:HD22	1.99	0.45
1:E:68:ILE:HG23	1:E:101:THR:CG2	2.42	0.45
1:B:102:VAL:N	1:B:103:PRO:CD	2.80	0.45
1:D:24:ASP:OD1	1:D:26:SER:OG	2.35	0.44
2:D:301:RET:H171	2:D:301:RET:C8	2.37	0.44
1:E:167:TYR:CE1	1:E:190:MSE:HE3	2.52	0.44
2:A:301:RET:H161	2:A:301:RET:C8	2.45	0.44
1:D:209:LEU:C	1:D:210:MSE:HG2	2.37	0.44
1:A:112:ILE:HG21	1:A:186:TYR:HA	1.99	0.44
1:B:185:ALA:HB1	1:B:189:MSE:HE2	1.98	0.44
2:B:301:RET:H8	2:B:301:RET:C16	2.47	0.44
1:D:152:PHE:CE2	1:D:156:MSE:HE2	2.53	0.44

*Continued on next page...*

*Continued from previous page...*

Atom-1	Atom-2	Interatomic distance (Å)	Clash overlap (Å)
2:D:301:RET:H181	2:D:301:RET:H7	1.65	0.43
2:A:301:RET:H7	2:A:301:RET:H181	1.80	0.43
1:B:116:CYS:HB2	1:B:177:THR:O	2.17	0.43
1:B:117:THR:HG23	1:B:177:THR:OG1	2.18	0.43
1:B:189:MSE:O	1:B:192:ILE:HG22	2.18	0.43
2:E:301:RET:H7	2:E:301:RET:H181	1.67	0.43
1:A:28:THR:HG22	1:A:222:LEU:HD21	2.01	0.43
1:B:152:PHE:CE2	1:B:156:MSE:HE1	2.49	0.43
2:C:301:RET:H7	2:C:301:RET:H181	1.79	0.43
1:E:29:VAL:CG2	1:E:83:TRP:CE2	3.01	0.43
1:B:41:LEU:HD13	1:B:73:PHE:CZ	2.54	0.43
2:C:301:RET:C8	2:C:301:RET:C17	2.95	0.43
1:E:80:ARG:NH1	1:E:84:ILE:CD1	2.82	0.43
1:A:200:TYR:N	1:A:201:PRO:HD2	2.34	0.43
1:C:134:MSE:CE	2:C:301:RET:H192	2.48	0.43
1:E:119:VAL:HG11	1:E:170:GLU:HG2	2.00	0.43
1:B:80:ARG:CZ	1:B:84:ILE:HD12	2.49	0.42
1:A:96:ILE:CD1	1:E:23:LEU:HD23	2.49	0.42
1:B:119:VAL:HG23	1:B:174:ALA:HB2	2.01	0.42
1:D:78:TYR:O	1:D:82:VAL:HG23	2.20	0.42
1:B:32:SER:O	1:B:36:VAL:HG12	2.20	0.42
1:B:185:ALA:HB1	1:B:189:MSE:CE	2.49	0.42
1:D:197:TRP:O	1:D:201:PRO:HD2	2.20	0.42
1:B:54:VAL:HG11	1:B:62:LEU:CD1	2.50	0.42
1:C:169:GLY:O	1:C:172:LYS:HB2	2.20	0.42
1:D:189:MSE:SE	1:D:239:ILE:HD11	2.69	0.42
1:D:191:MSE:O	1:D:195:VAL:N	2.52	0.42
2:A:301:RET:H11	2:A:301:RET:H191	1.81	0.42
1:B:147:PRO:HB2	1:B:150:PRO:CD	2.50	0.41
1:C:53:GLN:HE21	1:C:53:GLN:HA	1.85	0.41
1:C:198:ALA:O	1:C:201:PRO:HD2	2.20	0.41
1:B:102:VAL:HG22	2:B:301:RET:H202	2.02	0.41
1:D:36:VAL:O	1:D:40:MSE:HG2	2.20	0.41
1:B:147:PRO:HG2	1:B:150:PRO:HG2	2.01	0.41
1:D:105:GLN:O	1:D:108:GLU:HB3	2.19	0.41
1:E:36:VAL:O	1:E:40:MSE:HG2	2.21	0.41
1:E:191:MSE:O	1:E:195:VAL:HG13	2.19	0.41
2:B:301:RET:H161	2:B:301:RET:C8	2.47	0.41
1:C:70:GLY:O	1:C:73:PHE:HB3	2.21	0.41
1:E:55:SER:O	1:E:56:ALA:C	2.58	0.41
1:B:162:MSE:HE2	1:B:162:MSE:HB3	1.90	0.41

*Continued on next page...*

Continued from previous page...

Atom-1	Atom-2	Interatomic distance (Å)	Clash overlap (Å)
1:C:78:TYR:O	1:C:82:VAL:HG13	2.20	0.41
1:D:210:MSE:O	1:D:211:GLY:C	2.60	0.41
1:D:52:ASP:C	1:D:52:ASP:OD1	2.58	0.40
1:E:33:PHE:CB	1:E:80:ARG:HG3	2.51	0.40
1:B:208:TYR:O	1:B:209:LEU:HD23	2.21	0.40
1:E:102:VAL:N	1:E:103:PRO:CD	2.85	0.40
1:A:204:TYR:CD1	1:A:204:TYR:C	2.95	0.40
1:C:123:LEU:HA	1:C:123:LEU:HD23	1.91	0.40
1:A:52:ASP:N	1:A:52:ASP:OD1	2.55	0.40
1:B:61:SER:HB3	1:B:239:ILE:HG21	2.03	0.40
1:E:102:VAL:HB	1:E:103:PRO:HD3	2.03	0.40

There are no symmetry-related clashes.

## 5.3 Torsion angles

### 5.3.1 Protein backbone

In the following table, the Percentiles column shows the percent Ramachandran outliers of the chain as a percentile score with respect to all X-ray entries followed by that with respect to entries of similar resolution.

The Analysed column shows the number of residues for which the backbone conformation was analysed, and the total number of residues.

Mol	Chain	Analysed	Favoured	Allowed	Outliers	Percentiles	
1	A	222/259 (86%)	211 (95%)	11 (5%)	0	100	100
1	B	228/259 (88%)	218 (96%)	10 (4%)	0	100	100
1	C	226/259 (87%)	212 (94%)	14 (6%)	0	100	100
1	D	213/259 (82%)	201 (94%)	11 (5%)	1 (0%)	29	54
1	E	220/259 (85%)	205 (93%)	14 (6%)	1 (0%)	29	54
All	All	1109/1295 (86%)	1047 (94%)	60 (5%)	2 (0%)	47	73

All (2) Ramachandran outliers are listed below:

Mol	Chain	Res	Type
1	E	198	ALA
1	D	194	VAL

### 5.3.2 Protein sidechains ⓘ

In the following table, the Percentiles column shows the percent sidechain outliers of the chain as a percentile score with respect to all X-ray entries followed by that with respect to entries of similar resolution.

The Analysed column shows the number of residues for which the sidechain conformation was analysed, and the total number of residues.

Mol	Chain	Analysed	Rotameric	Outliers	Percentiles	
1	A	177/187 (95%)	172 (97%)	5 (3%)	43	73
1	B	181/187 (97%)	173 (96%)	8 (4%)	28	56
1	C	179/187 (96%)	175 (98%)	4 (2%)	52	79
1	D	173/187 (92%)	164 (95%)	9 (5%)	23	49
1	E	177/187 (95%)	170 (96%)	7 (4%)	31	60
All	All	887/935 (95%)	854 (96%)	33 (4%)	34	63

All (33) residues with a non-rotameric sidechain are listed below:

Mol	Chain	Res	Type
1	A	69	THR
1	A	113	LEU
1	A	195	VAL
1	A	209	LEU
1	A	218	SER
1	B	117	THR
1	B	119	VAL
1	B	192	ILE
1	B	195	VAL
1	B	210	MSE
1	B	218	SER
1	B	222	LEU
1	B	249	ASN
1	C	28	THR
1	C	84	ILE
1	C	189	MSE
1	C	251	LEU
1	D	53	GLN
1	D	89	THR
1	D	148	VAL
1	D	149	LEU
1	D	184	SER
1	D	195	VAL

*Continued on next page...*



*Continued from previous page...*

Mol	Chain	Res	Type
1	D	210	MSE
1	D	222	LEU
1	D	246	GLU
1	E	31	VAL
1	E	84	ILE
1	E	148	VAL
1	E	179	SER
1	E	195	VAL
1	E	222	LEU
1	E	246	GLU

Sometimes sidechains can be flipped to improve hydrogen bonding and reduce clashes. All (7) such sidechains are listed below:

Mol	Chain	Res	Type
1	A	249	ASN
1	C	53	GLN
1	C	249	ASN
1	C	253	HIS
1	D	253	HIS
1	E	221	ASN
1	E	253	HIS

### 5.3.3 RNA [i](#)

There are no RNA molecules in this entry.

## 5.4 Non-standard residues in protein, DNA, RNA chains [i](#)

There are no non-standard protein/DNA/RNA residues in this entry.

### 5.5 Carbohydrates [i](#)

There are no monosaccharides in this entry.

### 5.6 Ligand geometry [i](#)

5 ligands are modelled in this entry.

In the following table, the Counts columns list the number of bonds (or angles) for which Mogul statistics could be retrieved, the number of bonds (or angles) that are observed in the model and the number of bonds (or angles) that are defined in the Chemical Component Dictionary. The Link column lists molecule types, if any, to which the group is linked. The Z score for a bond length (or angle) is the number of standard deviations the observed value is removed from the expected value. A bond length (or angle) with  $|Z| > 2$  is considered an outlier worth inspection. RMSZ is the root-mean-square of all Z scores of the bond lengths (or angles).

Mol	Type	Chain	Res	Link	Bond lengths			Bond angles		
					Counts	RMSZ	# $ Z  > 2$	Counts	RMSZ	# $ Z  > 2$
2	RET	E	301	1	20,20,21	0.84	0	27,27,28	3.67	16 (59%)
2	RET	B	301	1	20,20,21	1.08	1 (5%)	27,27,28	3.67	12 (44%)
2	RET	D	301	1	20,20,21	0.87	0	27,27,28	3.50	14 (51%)
2	RET	A	301	1	20,20,21	0.96	0	27,27,28	4.09	14 (51%)
2	RET	C	301	1	20,20,21	1.40	1 (5%)	27,27,28	3.30	11 (40%)

In the following table, the Chirals column lists the number of chiral outliers, the number of chiral centers analysed, the number of these observed in the model and the number defined in the Chemical Component Dictionary. Similar counts are reported in the Torsion and Rings columns. '-' means no outliers of that kind were identified.

Mol	Type	Chain	Res	Link	Chirals	Torsions	Rings
2	RET	E	301	1	-	0/13/30/31	0/1/1/1
2	RET	B	301	1	-	0/13/30/31	0/1/1/1
2	RET	D	301	1	-	0/13/30/31	0/1/1/1
2	RET	A	301	1	-	0/13/30/31	0/1/1/1
2	RET	C	301	1	-	0/13/30/31	0/1/1/1

All (2) bond length outliers are listed below:

Mol	Chain	Res	Type	Atoms	Z	Observed(Å)	Ideal(Å)
2	C	301	RET	C14-C13	4.55	1.36	1.33
2	B	301	RET	C14-C13	3.12	1.35	1.33

All (67) bond angle outliers are listed below:

Mol	Chain	Res	Type	Atoms	Z	Observed(°)	Ideal(°)
2	A	301	RET	C17-C1-C6	-12.30	90.96	110.24
2	B	301	RET	C17-C1-C6	-10.73	93.41	110.24
2	E	301	RET	C17-C1-C6	-9.81	94.85	110.24
2	A	301	RET	C16-C1-C6	8.32	123.29	110.24
2	C	301	RET	C1-C6-C5	-8.26	111.35	122.64
2	D	301	RET	C16-C1-C6	8.04	122.85	110.24

*Continued on next page...*

*Continued from previous page...*

Mol	Chain	Res	Type	Atoms	Z	Observed(°)	Ideal(°)
2	A	301	RET	C2-C1-C6	7.13	120.80	110.44
2	B	301	RET	C16-C1-C6	7.00	121.22	110.24
2	D	301	RET	C17-C1-C16	-6.98	88.66	108.63
2	B	301	RET	C2-C1-C6	6.91	120.48	110.44
2	D	301	RET	C17-C1-C6	-6.74	99.68	110.24
2	E	301	RET	C16-C1-C6	6.70	120.75	110.24
2	C	301	RET	C17-C1-C6	-6.63	99.84	110.24
2	E	301	RET	C17-C1-C16	-6.37	90.38	108.63
2	E	301	RET	C2-C1-C6	6.37	119.69	110.44
2	A	301	RET	C17-C1-C16	-6.26	90.70	108.63
2	D	301	RET	C1-C6-C5	-6.11	114.28	122.64
2	C	301	RET	C17-C1-C16	-5.48	92.94	108.63
2	D	301	RET	C1-C6-C7	5.40	130.31	115.65
2	D	301	RET	C17-C1-C2	-5.40	88.21	108.95
2	B	301	RET	C1-C6-C5	-5.37	115.30	122.64
2	A	301	RET	C20-C13-C12	5.35	126.26	118.09
2	C	301	RET	C17-C1-C2	-5.23	88.86	108.95
2	B	301	RET	C17-C1-C16	-5.21	93.73	108.63
2	E	301	RET	C17-C1-C2	-5.11	89.32	108.95
2	C	301	RET	C1-C6-C7	5.07	129.40	115.65
2	B	301	RET	C17-C1-C2	-4.85	90.34	108.95
2	C	301	RET	C2-C1-C6	4.58	117.09	110.44
2	A	301	RET	C17-C1-C2	-4.49	91.69	108.95
2	A	301	RET	C1-C6-C5	-4.45	116.56	122.64
2	C	301	RET	C16-C1-C6	4.22	116.86	110.24
2	E	301	RET	C1-C6-C7	4.20	127.04	115.65
2	C	301	RET	C16-C1-C2	4.13	124.79	108.95
2	E	301	RET	C7-C8-C9	-3.90	120.47	126.23
2	B	301	RET	C1-C6-C7	3.87	126.16	115.65
2	E	301	RET	C11-C10-C9	-3.86	121.86	127.28
2	E	301	RET	C1-C6-C5	-3.67	117.62	122.64
2	A	301	RET	C1-C6-C7	3.64	125.52	115.65
2	A	301	RET	C19-C9-C8	3.41	123.30	118.09
2	D	301	RET	C16-C1-C2	3.40	122.00	108.95
2	B	301	RET	C11-C10-C9	-3.28	122.69	127.28
2	A	301	RET	C11-C10-C9	-3.02	123.04	127.28
2	C	301	RET	C10-C11-C12	-3.02	114.45	123.20
2	D	301	RET	C19-C9-C8	2.97	122.63	118.09
2	B	301	RET	C3-C4-C5	-2.97	108.76	114.06
2	D	301	RET	C2-C1-C6	2.96	114.74	110.44
2	A	301	RET	C12-C13-C14	-2.93	110.77	118.55
2	C	301	RET	C7-C8-C9	-2.89	121.96	126.23

*Continued on next page...*

*Continued from previous page...*

Mol	Chain	Res	Type	Atoms	Z	Observed(°)	Ideal(°)
2	D	301	RET	C10-C11-C12	-2.86	114.91	123.20
2	A	301	RET	C7-C8-C9	-2.77	122.13	126.23
2	E	301	RET	C7-C6-C5	-2.72	115.30	121.56
2	E	301	RET	C16-C1-C2	2.71	119.35	108.95
2	D	301	RET	C7-C6-C5	-2.67	115.40	121.56
2	A	301	RET	C19-C9-C10	-2.66	118.50	122.82
2	C	301	RET	C19-C9-C8	2.58	122.03	118.09
2	B	301	RET	C20-C13-C12	2.55	121.99	118.09
2	E	301	RET	C12-C13-C14	-2.47	111.99	118.55
2	E	301	RET	C20-C13-C12	2.47	121.86	118.09
2	B	301	RET	C19-C9-C8	2.45	121.84	118.09
2	E	301	RET	C19-C9-C8	2.34	121.66	118.09
2	E	301	RET	C10-C11-C12	-2.33	116.44	123.20
2	D	301	RET	C3-C4-C5	2.31	118.17	114.06
2	B	301	RET	C16-C1-C2	2.28	117.72	108.95
2	D	301	RET	C3-C2-C1	-2.25	106.45	114.43
2	E	301	RET	C4-C5-C6	-2.21	119.71	122.70
2	A	301	RET	C10-C11-C12	-2.20	116.83	123.20
2	D	301	RET	C20-C13-C12	2.01	121.17	118.09

There are no chirality outliers.

There are no torsion outliers.

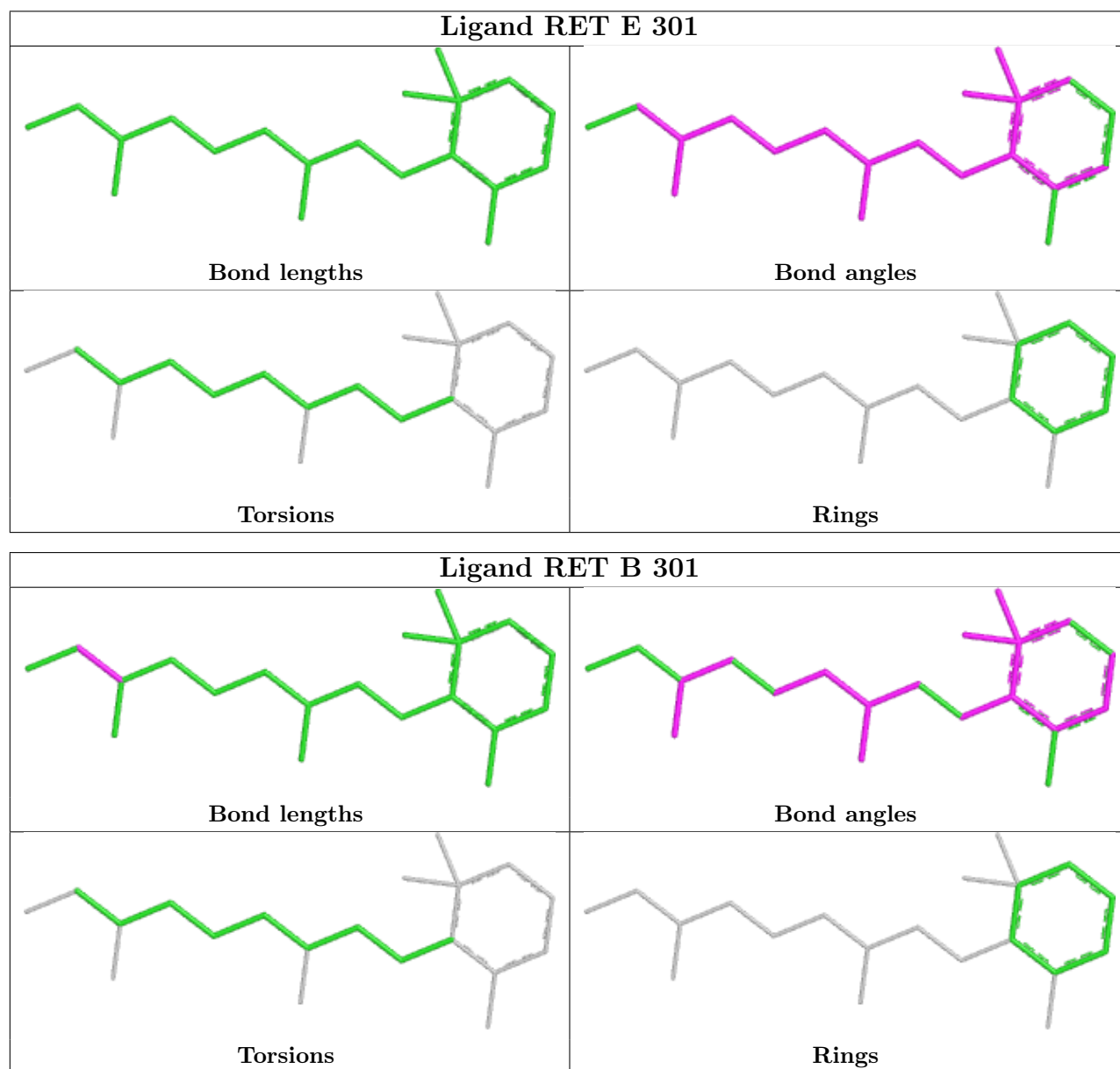
There are no ring outliers.

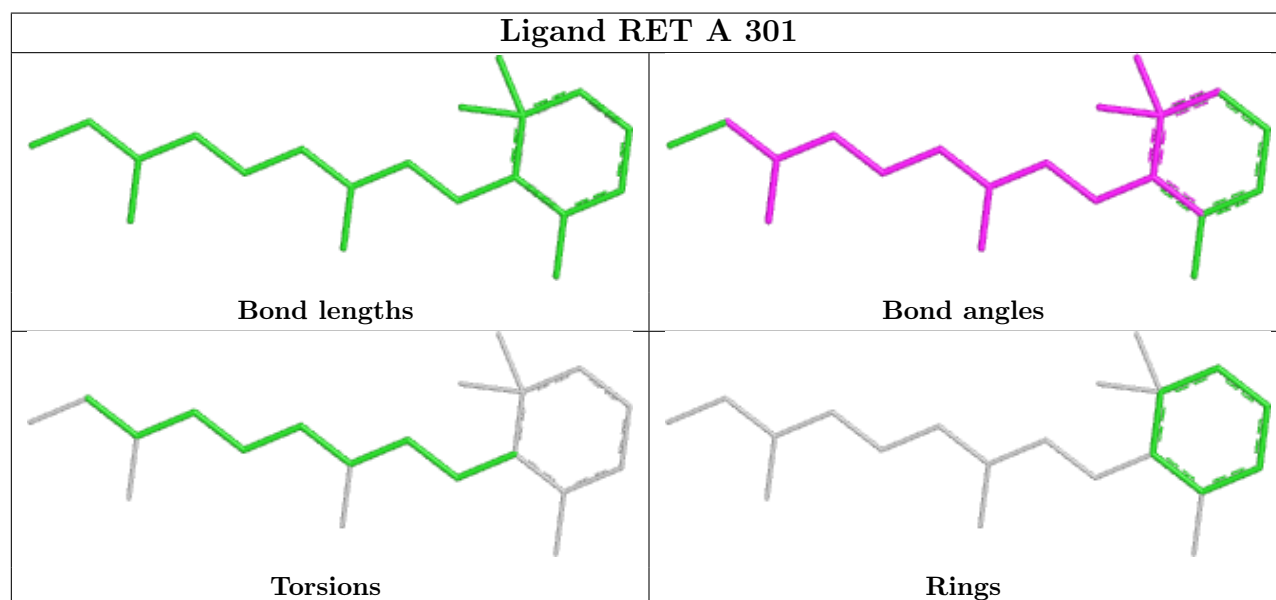
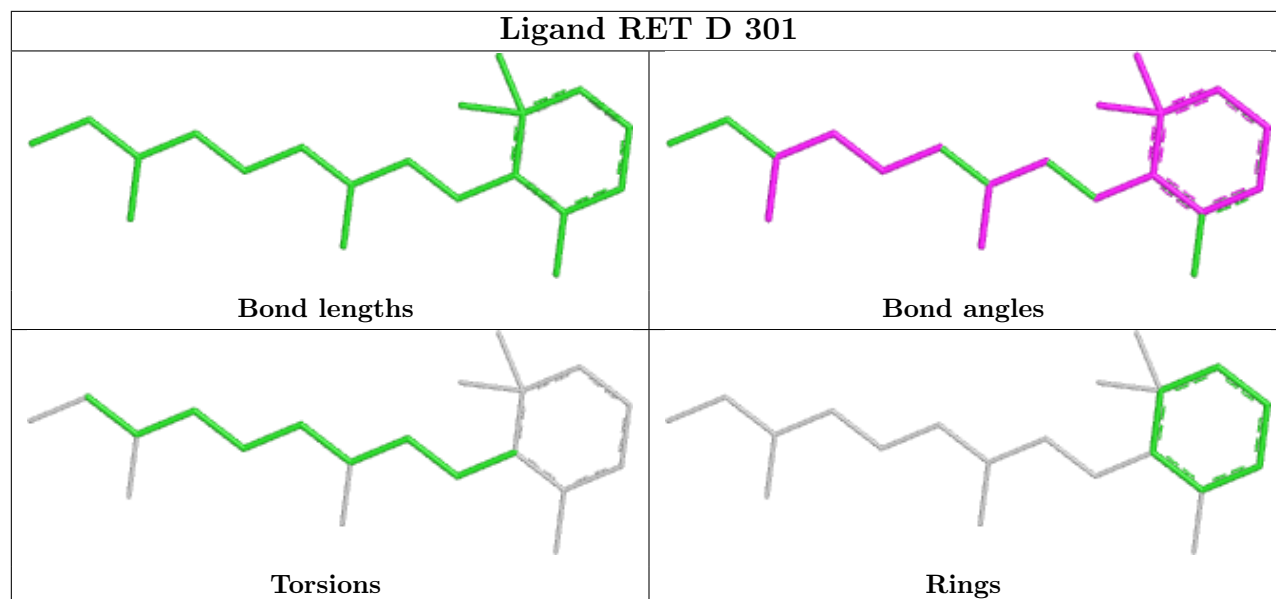
5 monomers are involved in 33 short contacts:

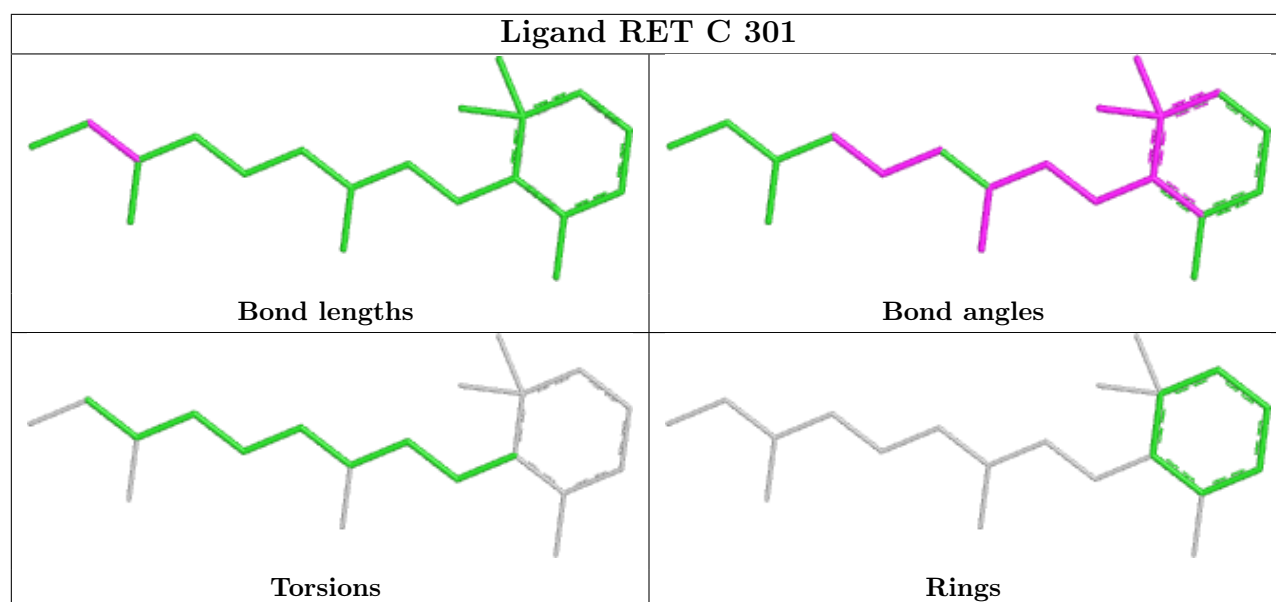
Mol	Chain	Res	Type	Clashes	Symm-Clashes
2	E	301	RET	4	0
2	B	301	RET	9	0
2	D	301	RET	4	0
2	A	301	RET	6	0
2	C	301	RET	10	0

The following is a two-dimensional graphical depiction of Mogul quality analysis of bond lengths, bond angles, torsion angles, and ring geometry for all instances of the Ligand of Interest. In addition, ligands with molecular weight > 250 and outliers as shown on the validation Tables will also be included. For torsion angles, if less than 5% of the Mogul distribution of torsion angles is within 10 degrees of the torsion angle in question, then that torsion angle is considered an outlier. Any bond that is central to one or more torsion angles identified as an outlier by Mogul will be highlighted in the graph. For rings, the root-mean-square deviation (RMSD) between the ring in question and similar rings identified by Mogul is calculated over all ring torsion angles. If the average RMSD is greater than 60 degrees and the minimal RMSD between the ring in question and any Mogul-identified rings is also greater than 60 degrees, then that ring is considered an outlier.

The outliers are highlighted in purple. The color gray indicates Mogul did not find sufficient equivalents in the CSD to analyse the geometry.







## 5.7 Other polymers [i](#)

There are no such residues in this entry.

## 5.8 Polymer linkage issues [i](#)

There are no chain breaks in this entry.

## 6 Fit of model and data

### 6.1 Protein, DNA and RNA chains

In the following table, the column labelled ‘#RSRZ > 2’ contains the number (and percentage) of RSRZ outliers, followed by percent RSRZ outliers for the chain as percentile scores relative to all X-ray entries and entries of similar resolution. The OWAB column contains the minimum, median, 95<sup>th</sup> percentile and maximum values of the occupancy-weighted average B-factor per residue. The column labelled ‘Q < 0.9’ lists the number of (and percentage) of residues with an average occupancy less than 0.9.

Mol	Chain	Analysed	<RSRZ>	#RSRZ > 2		OWAB(Å <sup>2</sup> )	Q < 0.9
1	A	218/259 (84%)	0.16	14 (6%)	19 18	43, 66, 104, 129	0
1	B	222/259 (85%)	0.18	13 (5%)	22 21	37, 66, 104, 131	0
1	C	220/259 (84%)	0.11	13 (5%)	22 21	43, 69, 104, 116	0
1	D	211/259 (81%)	0.12	14 (6%)	18 16	45, 74, 107, 125	0
1	E	216/259 (83%)	0.06	10 (4%)	32 31	44, 66, 101, 132	0
All	All	1087/1295 (83%)	0.13	64 (5%)	22 21	37, 68, 104, 132	0

All (64) RSRZ outliers are listed below:

Mol	Chain	Res	Type	RSRZ
1	A	253	HIS	6.2
1	B	254	HIS	5.7
1	D	20	GLY	5.3
1	C	178	ALA	5.3
1	E	115	ALA	5.1
1	E	253	HIS	5.1
1	E	118	SER	4.9
1	C	253	HIS	4.6
1	B	21	GLY	4.4
1	B	253	HIS	4.2
1	A	178	ALA	3.9
1	B	85	ASP	3.9
1	B	115	ALA	3.9
1	D	211	GLY	3.9
1	D	114	ALA	3.8
1	B	255	HIS	3.7
1	E	177	THR	3.7
1	A	212	GLY	3.7
1	C	251	LEU	3.7
1	D	180	PRO	3.7

*Continued on next page...*



*Continued from previous page...*

Mol	Chain	Res	Type	RSRZ
1	E	252	GLU	3.4
1	D	253	HIS	3.4
1	A	21	GLY	3.3
1	A	116	CYS	3.3
1	B	116	CYS	3.2
1	C	173	ALA	3.2
1	C	174	ALA	3.2
1	C	216	TYR	3.2
1	E	251	LEU	3.2
1	B	86	THR	3.1
1	A	251	LEU	3.1
1	D	183	ASN	3.0
1	C	175	VAL	3.0
1	B	114	ALA	3.0
1	C	85	ASP	2.9
1	C	177	THR	2.9
1	E	85	ASP	2.8
1	C	118	SER	2.8
1	D	167	TYR	2.8
1	D	216	TYR	2.8
1	A	214	GLY	2.8
1	A	252	GLU	2.7
1	B	167	TYR	2.7
1	D	145	LEU	2.7
1	D	119	VAL	2.7
1	E	26	SER	2.6
1	B	211	GLY	2.6
1	B	252	GLU	2.6
1	E	216	TYR	2.6
1	D	251	LEU	2.6
1	A	117	THR	2.6
1	D	179	SER	2.6
1	C	172	LYS	2.5
1	C	166	LEU	2.5
1	C	163	ILE	2.4
1	E	117	THR	2.4
1	A	118	SER	2.4
1	A	85	ASP	2.4
1	A	121	ALA	2.3
1	D	164	TYR	2.3
1	D	109	PHE	2.2
1	A	211	GLY	2.2

*Continued on next page...*

*Continued from previous page...*

Mol	Chain	Res	Type	RSRZ
1	B	216	TYR	2.0
1	A	179	SER	2.0

## 6.2 Non-standard residues in protein, DNA, RNA chains [i](#)

There are no non-standard protein/DNA/RNA residues in this entry.

## 6.3 Carbohydrates [i](#)

There are no monosaccharides in this entry.

## 6.4 Ligands [i](#)

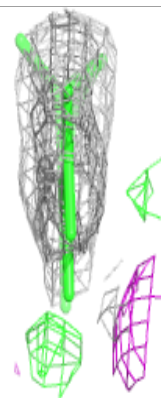
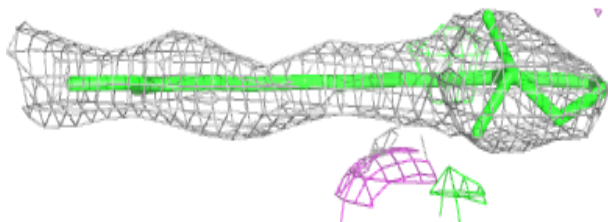
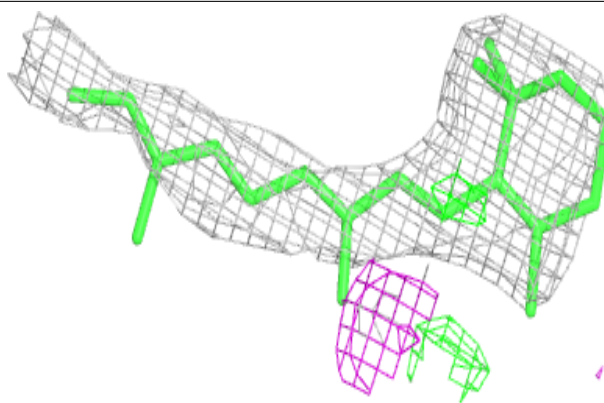
In the following table, the Atoms column lists the number of modelled atoms in the group and the number defined in the chemical component dictionary. The B-factors column lists the minimum, median, 95<sup>th</sup> percentile and maximum values of B factors of atoms in the group. The column labelled 'Q < 0.9' lists the number of atoms with occupancy less than 0.9.

Mol	Type	Chain	Res	Atoms	RSCC	RSR	B-factors( $\text{\AA}^2$ )	Q<0.9
2	RET	D	301	20/21	0.88	0.30	73,82,95,98	0
2	RET	A	301	20/21	0.91	0.27	56,68,79,82	0
2	RET	E	301	20/21	0.92	0.24	54,68,77,77	0
2	RET	B	301	20/21	0.93	0.23	50,60,76,76	0
2	RET	C	301	20/21	0.93	0.22	60,69,74,76	0

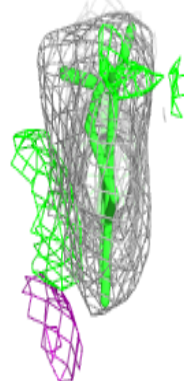
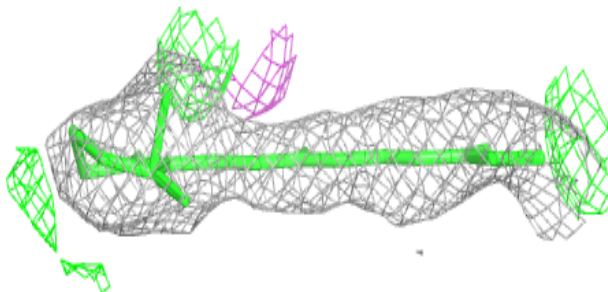
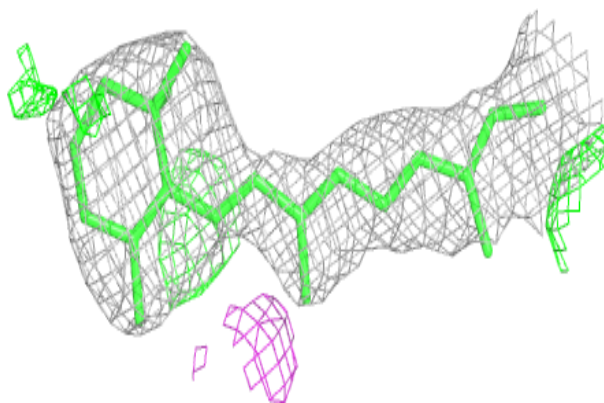
The following is a graphical depiction of the model fit to experimental electron density of all instances of the Ligand of Interest. In addition, ligands with molecular weight > 250 and outliers as shown on the geometry validation Tables will also be included. Each fit is shown from different orientation to approximate a three-dimensional view.

**Electron density around RET D 301:**

$2mF_o-DF_c$  (at 0.7 rmsd) in gray  
 $mF_o-DF_c$  (at 3 rmsd) in purple (negative)  
and green (positive)

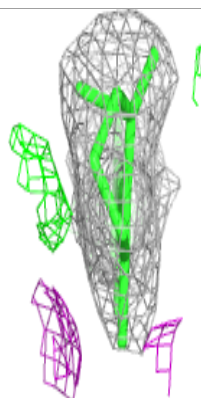
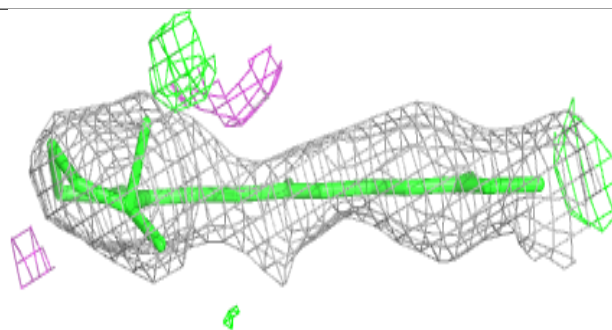
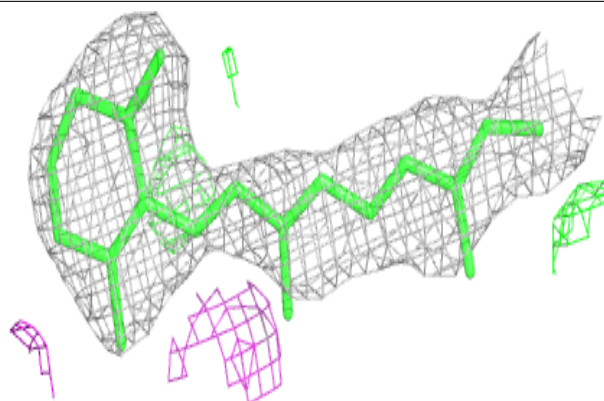
**Electron density around RET A 301:**

$2mF_o-DF_c$  (at 0.7 rmsd) in gray  
 $mF_o-DF_c$  (at 3 rmsd) in purple (negative)  
and green (positive)

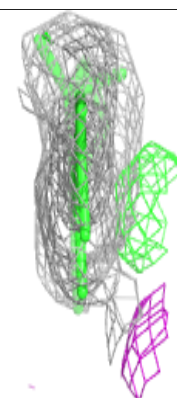
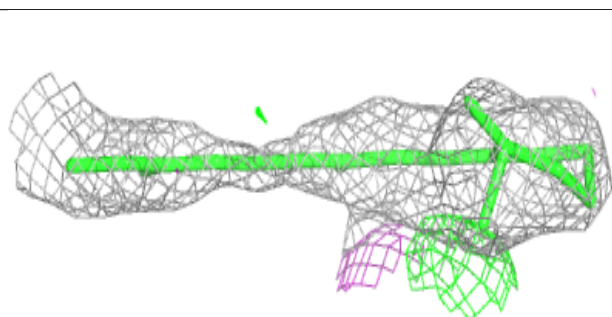
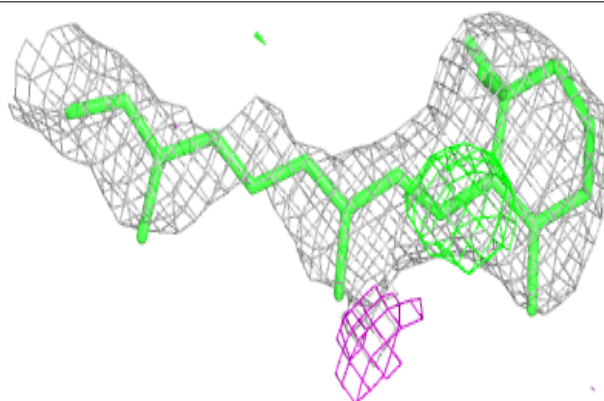


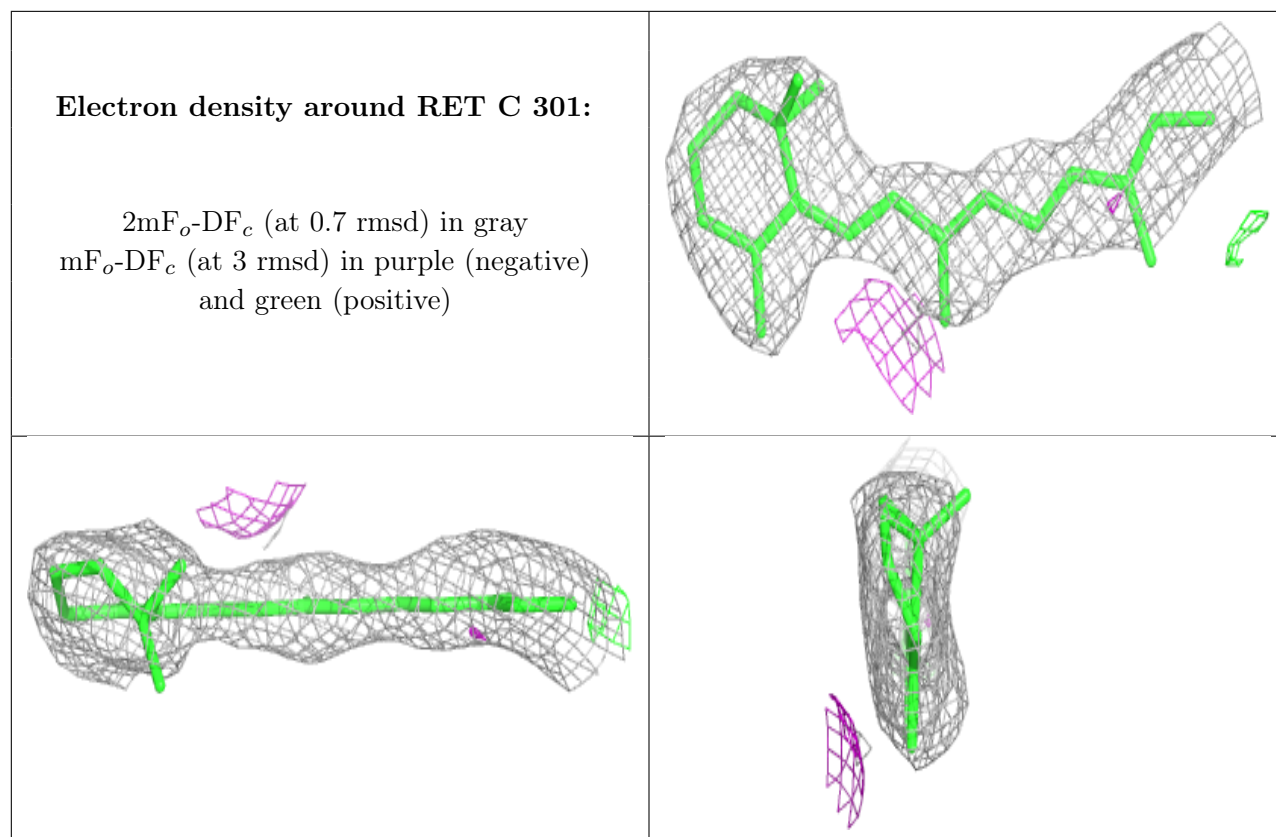
**Electron density around RET E 301:**

$2mF_o-DF_c$  (at 0.7 rmsd) in gray  
 $mF_o-DF_c$  (at 3 rmsd) in purple (negative)  
and green (positive)

**Electron density around RET B 301:**

$2mF_o-DF_c$  (at 0.7 rmsd) in gray  
 $mF_o-DF_c$  (at 3 rmsd) in purple (negative)  
and green (positive)





## 6.5 Other polymers [i](#)

There are no such residues in this entry.