



wwPDB EM Validation Summary Report ⓘ

Apr 15, 2026 – 02:40 AM UTC

PDB ID : 9K15 / pdb_00009k15
EMDB ID : EMD-61965
Title : A cryo-EM structure of *B. oleracea* RNA polymerase V in complex with 4U scaffold at 3.32 Angstrom
Authors : Xie, G.; Du, X.; Du, J.
Deposited on : 2024-10-16
Resolution : 3.32 Å(reported)

This is a wwPDB EM Validation Summary Report for a publicly released PDB entry.

We welcome your comments at validation@mail.wwpdb.org

A user guide is available at
<https://www.wwpdb.org/validation/2017/EMValidationReportHelp>
with specific help available everywhere you see the ⓘ symbol.

The types of validation reports are described at
<http://www.wwpdb.org/validation/2017/FAQs#types>.

The following versions of software and data (see [references ⓘ](#)) were used in the production of this report:

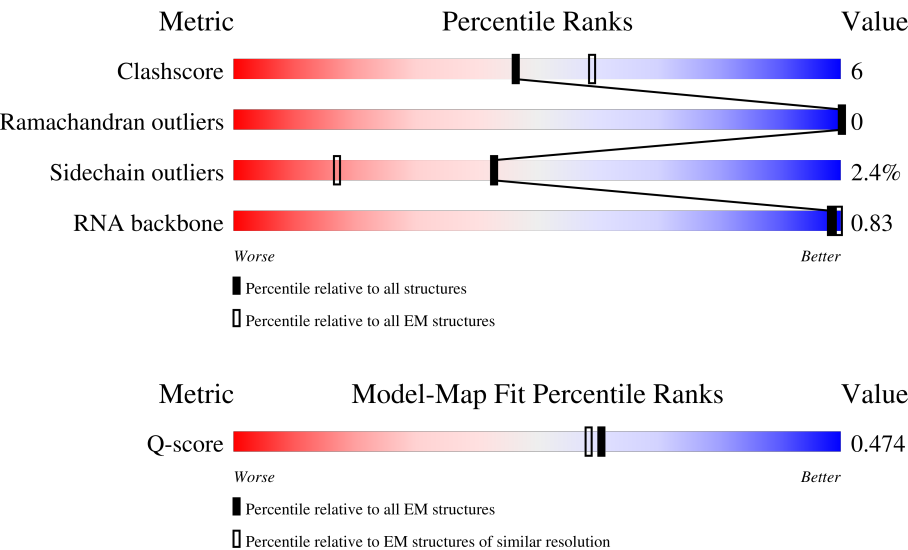
EMDB validation analysis : 0.0.1.dev132
MolProbity : 4-5-2 with Phenix2.0
Percentile statistics : 20250101.v01 (using entries in the PDB archive January 1st 2025)
EM percentile statistics : 202505.v01 (Using data in the EMDb archive up until May 2025)
MapQ : 1.9.13
Ideal geometry (proteins) : Engh & Huber (2001)
Ideal geometry (DNA, RNA) : Parkinson et al. (1996)
Validation Pipeline (wwPDB-VP) : 2.49

1 Overall quality at a glance i

The following experimental techniques were used to determine the structure:
ELECTRON MICROSCOPY

The reported resolution of this entry is 3.32 Å.

Percentile scores (ranging between 0-100) for global validation metrics of the entry are shown in the following graphic. The table shows the number of entries on which the scores are based.













Metric	Whole archive (#Entries)	EM structures (#Entries)	Similar EM resolution (#Entries, resolution range(Å))
Clashscore	229148	23984	-
Ramachandran outliers	224038	23583	-
Sidechain outliers	223484	23102	-
RNA backbone	8273	3508	-
Q-score	-	25397	14518 (2.82 - 3.82)

The table below summarises the geometric issues observed across the polymeric chains and their fit to the map. The red, orange, yellow and green segments of the bar indicate the fraction of residues that contain outliers for >=3, 2, 1 and 0 types of geometric quality criteria respectively. A grey segment represents the fraction of residues that are not modelled. The numeric value for each fraction is indicated below the corresponding segment, with a dot representing fractions <=5%. The upper red bar (where present) indicates the fraction of residues that have poor fit to the EM map (all-atom inclusion < 40%). The numeric value is given above the bar.

Mol	Chain	Length	Quality of chain
1	A	2032	<div><div></div><div>33%7%59%</div></div>
2	C	319	<div><div></div><div>81%9%10%</div></div>
3	F	144	<div><div></div><div>40%12%48%</div></div>

Continued on next page...

Continued from previous page...

Mol	Chain	Length	Quality of chain
4	J	71	 89% 11%
5	K	116	 84% 8% 7%
6	L	51	 65% 24% 12%
7	H	146	 79% 17% . .
8	I	114	 20% 66% 19% 15%
9	E	230	 74% 17% 9%
10	B	1169	 73% 9% 17%
11	T	34	 18% 9% 24% 68%
12	N	34	 9% 38% 12% 50%
13	P	20	 20% 10% 10% 80%

2 Entry composition

There are 15 unique types of molecules in this entry. The entry contains 23098 atoms, of which 0 are hydrogens and 0 are deuteriums.

In the tables below, the AltConf column contains the number of residues with at least one atom in alternate conformation and the Trace column contains the number of residues modelled with at most 2 atoms.

- Molecule 1 is a protein called DNA-directed RNA polymerase V largest subunit.

Mol	Chain	Residues	Atoms					AltConf	Trace
1	A	834	Total	C	N	O	S	0	0
			6530	4124	1125	1237	44		

- Molecule 2 is a protein called DNA-directed RNA polymerase RpoA/D/Rpb3-type domain-containing protein.

Mol	Chain	Residues	Atoms					AltConf	Trace
2	C	287	Total	C	N	O	S	0	0
			2256	1418	380	445	13		

There is a discrepancy between the modelled and reference sequences:

Chain	Residue	Modelled	Actual	Comment	Reference
C	2	THR	SER	conflict	UNP A0A0D3D418

- Molecule 3 is a protein called DNA-directed RNA polymerase RpoA/D/Rpb3-type domain-containing protein.

Mol	Chain	Residues	Atoms					AltConf	Trace
3	F	75	Total	C	N	O	S	0	0
			616	392	108	112	4		

There is a discrepancy between the modelled and reference sequences:

Chain	Residue	Modelled	Actual	Comment	Reference
F	51	GLU	ASP	conflict	UNP A0A0D3BZZ8

- Molecule 4 is a protein called DNA-directed RNA polymerase II, IV and V subunit 10.

Mol	Chain	Residues	Atoms					AltConf	Trace
4	J	63	Total	C	N	O	S	0	0
			507	324	85	91	7		

- Molecule 5 is a protein called DNA-directed RNA polymerase RBP11-like dimerisation domain-containing protein.

Mol	Chain	Residues	Atoms					AltConf	Trace
5	K	108	Total	C	N	O	S	0	0
			890	565	156	167	2		

- Molecule 6 is a protein called DNA-directed RNA polymerase II, IV and V subunit 12.

Mol	Chain	Residues	Atoms					AltConf	Trace
6	L	45	Total	C	N	O	S	0	0
			365	224	70	67	4		

There are 2 discrepancies between the modelled and reference sequences:

Chain	Residue	Modelled	Actual	Comment	Reference
L	18	GLU	LYS	conflict	UNP A0A0D2ZPP3
L	32	CYS	ARG	conflict	UNP A0A0D2ZPP3

- Molecule 7 is a protein called DNA-directed RNA polymerase II, IV and V subunit 8.

Mol	Chain	Residues	Atoms					AltConf	Trace
7	H	141	Total	C	N	O	S	0	0
			1129	729	183	208	9		

- Molecule 8 is a protein called DNA-directed RNA polymerase subunit.

Mol	Chain	Residues	Atoms					AltConf	Trace
8	I	97	Total	C	N	O	S	0	0
			787	482	150	143	12		

There are 2 discrepancies between the modelled and reference sequences:

Chain	Residue	Modelled	Actual	Comment	Reference
I	20	ARG	LYS	conflict	UNP A0A0D3A7P5
I	40	ASP	ASN	conflict	UNP A0A0D3A7P5

- Molecule 9 is a protein called RNA polymerase subunit H/Rpb5 C-terminal domain-containing protein.

Mol	Chain	Residues	Atoms					AltConf	Trace
9	E	209	Total	C	N	O	S	0	0
			1706	1085	303	316	2		

There are 3 discrepancies between the modelled and reference sequences:

Chain	Residue	Modelled	Actual	Comment	Reference
E	101	GLY	SER	conflict	UNP A0A0D3DTU3
E	182	GLN	HIS	conflict	UNP A0A0D3DTU3
E	210	ILE	VAL	conflict	UNP A0A0D3DTU3

- Molecule 10 is a protein called DNA-directed RNA polymerase IV and V subunit 2.

Mol	Chain	Residues	Atoms					AltConf	Trace
10	B	965	Total	C	N	O	S	0	0
			7645	4816	1355	1430	44		

- Molecule 11 is a DNA chain called DNA (34-MER).

Mol	Chain	Residues	Atoms					AltConf	Trace
11	T	11	Total	C	N	O	P	0	0
			225	107	43	64	11		

- Molecule 12 is a DNA chain called DNA (34-MER).

Mol	Chain	Residues	Atoms					AltConf	Trace
12	N	17	Total	C	N	O	P	0	0
			350	166	65	102	17		

- Molecule 13 is a RNA chain called RNA (5'-R(*UP*AP*UP*AP*UP*GP*CP*AP*GP*AP*AP*AP*GP*CP*GP*AP*UP*UP*UP*U)-3').

Mol	Chain	Residues	Atoms					AltConf	Trace
13	P	4	Total	C	N	O	P	0	0
			85	38	15	28	4		

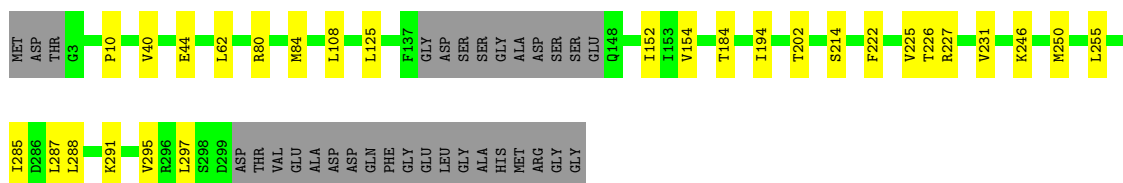
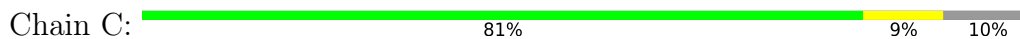
- Molecule 14 is MAGNESIUM ION (CCD ID: MG) (formula: Mg) (labeled as "Ligand of Interest" by depositor).

Mol	Chain	Residues	Atoms		AltConf
14	A	1	Total	Mg	0
			1	1	

- Molecule 15 is ZINC ION (CCD ID: ZN) (formula: Zn) (labeled as "Ligand of Interest" by depositor).

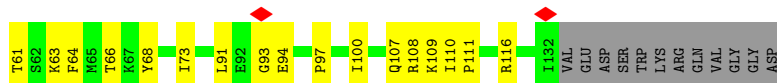
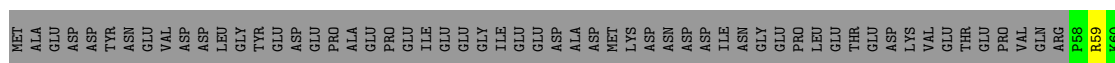
Mol	Chain	Residues	Atoms		AltConf
15	A	1	Total 1	Zn 1	0
15	C	1	Total 1	Zn 1	0
15	J	1	Total 1	Zn 1	0
15	L	1	Total 1	Zn 1	0
15	I	2	Total 2	Zn 2	0

- Molecule 2: DNA-directed RNA polymerase RpoA/D/Rpb3-type domain-containing protein



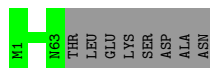
- Molecule 3: DNA-directed RNA polymerase RpoA/D/Rpb3-type domain-containing protein





- Molecule 4: DNA-directed RNA polymerase II, IV and V subunit 10

Chain J: 89% 11%



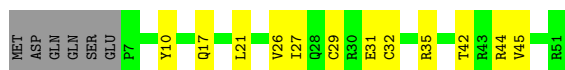
- Molecule 5: DNA-directed RNA polymerase RBP11-like dimerisation domain-containing protein

Chain K: 84% 8% 7%



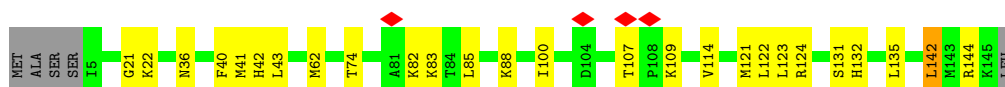
- Molecule 6: DNA-directed RNA polymerase II, IV and V subunit 12

Chain L: 65% 24% 12%



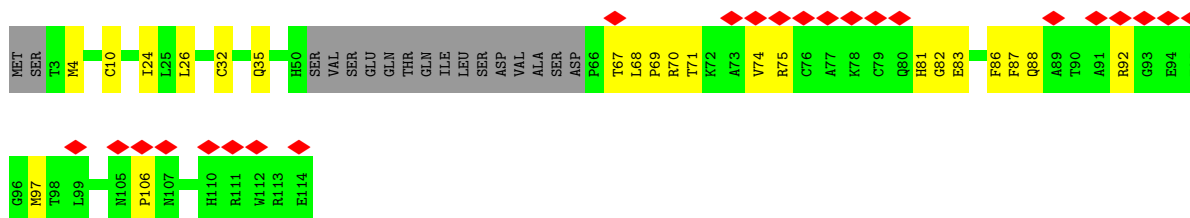
- Molecule 7: DNA-directed RNA polymerase II, IV and V subunit 8

Chain H: 79% 17% 2%



- Molecule 8: DNA-directed RNA polymerase subunit

Chain I: 20% 66% 19% 15%

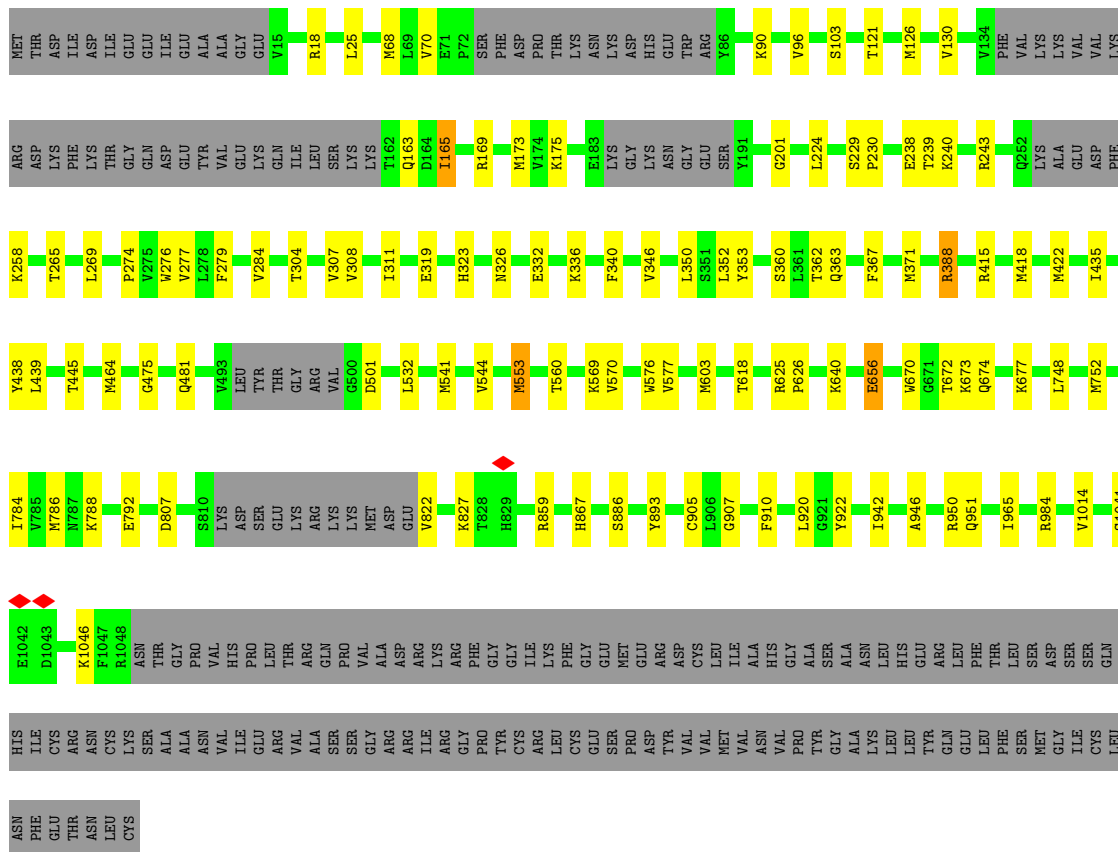


- Molecule 9: RNA polymerase subunit H/Rpb5 C-terminal domain-containing protein

Chain E: 74% 17% 9%

- Molecule 10: DNA-directed RNA polymerase IV and V subunit 2

Chain B:

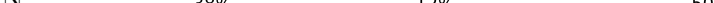


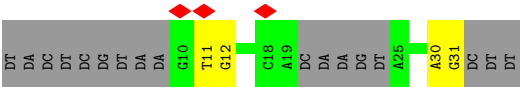
- Molecule 11: DNA (34-MER)

Chain T: 



- Molecule 12: DNA (34-MER)

Chain N: 



● Molecule 13: RNA (5'-R(*UP*AP*UP*AP*UP*GP*CP*AP*GP*AP*AP*AP*GP*CP*GP*AP*UP*UP*UP*U)-3')



4 Experimental information

Property	Value	Source
EM reconstruction method	SINGLE PARTICLE	Depositor
Imposed symmetry	POINT, Not provided	
Number of particles used	39800	Depositor
Resolution determination method	FSC 0.143 CUT-OFF	Depositor
CTF correction method	PHASE FLIPPING AND AMPLITUDE CORRECTION	Depositor
Microscope	FEI TALOS ARCTICA	Depositor
Voltage (kV)	300	Depositor
Electron dose ($e^-/\text{\AA}^2$)	1.5625	Depositor
Minimum defocus (nm)	1000	Depositor
Maximum defocus (nm)	2500	Depositor
Magnification	Not provided	
Image detector	GATAN K3 (6k x 4k)	Depositor
Maximum map value	0.118	Depositor
Minimum map value	-0.052	Depositor
Average map value	0.000	Depositor
Map value standard deviation	0.003	Depositor
Recommended contour level	0.0112	Depositor
Map size (Å)	328.5, 328.5, 328.5	wwPDB
Map dimensions	300, 300, 300	wwPDB
Map angles (°)	90.0, 90.0, 90.0	wwPDB
Pixel spacing (Å)	1.095, 1.095, 1.095	Depositor

5 Model quality

5.1 Standard geometry

Bond lengths and bond angles in the following residue types are not validated in this section: MG, ZN

The Z score for a bond length (or angle) is the number of standard deviations the observed value is removed from the expected value. A bond length (or angle) with $|Z| > 5$ is considered an outlier worth inspection. RMSZ is the root-mean-square of all Z scores of the bond lengths (or angles).

Mol	Chain	Bond lengths		Bond angles	
		RMSZ	# Z >5	RMSZ	# Z >5
1	A	0.16	0/6640	0.36	0/8961
2	C	0.20	0/2286	0.34	0/3087
3	F	0.15	0/627	0.37	0/841
4	J	0.21	0/515	0.33	0/696
5	K	0.20	0/908	0.29	0/1224
6	L	0.17	0/369	0.33	0/493
7	H	0.15	0/1155	0.36	0/1557
8	I	0.14	0/804	0.34	0/1081
9	E	0.12	0/1732	0.33	0/2332
10	B	0.20	0/7794	0.34	0/10503
11	T	0.20	0/251	0.38	0/382
12	N	0.22	0/391	0.41	0/599
13	P	0.08	0/94	0.21	0/144
All	All	0.18	0/23566	0.34	0/31900

There are no bond length outliers.

There are no bond angle outliers.

There are no chirality outliers.

There are no planarity outliers.

5.2 Too-close contacts

In the following table, the Non-H and H(model) columns list the number of non-hydrogen atoms and hydrogen atoms in the chain respectively. The H(added) column lists the number of hydrogen atoms added and optimized by MolProbity. The Clashes column lists the number of clashes within the asymmetric unit, whereas Symm-Clashes lists symmetry-related clashes.

Mol	Chain	Non-H	H(model)	H(added)	Clashes	Symm-Clashes
1	A	6530	0	6583	123	0

Continued on next page...

Continued from previous page...

Mol	Chain	Non-H	H(model)	H(added)	Clashes	Symm-Clashes
2	C	2256	0	2269	13	0
3	F	616	0	635	14	0
4	J	507	0	512	0	0
5	K	890	0	883	6	0
6	L	365	0	364	6	0
7	H	1129	0	1128	15	0
8	I	787	0	733	40	0
9	E	1706	0	1759	22	0
10	B	7645	0	7580	74	0
11	T	225	0	125	9	0
12	N	350	0	193	3	0
13	P	85	0	44	1	0
14	A	1	0	0	0	0
15	A	1	0	0	0	0
15	C	1	0	0	0	0
15	I	2	0	0	0	0
15	J	1	0	0	0	0
15	L	1	0	0	0	0
All	All	23098	0	22808	281	0

The all-atom clashscore is defined as the number of clashes found per 1000 atoms (including hydrogen atoms). The all-atom clashscore for this structure is 6.

The worst 5 of 281 close contacts within the same asymmetric unit are listed below, sorted by their clash magnitude.

Atom-1	Atom-2	Interatomic distance (Å)	Clash overlap (Å)
1:A:947:GLU:HG2	8:I:92:ARG:NH1	1.54	1.13
1:A:897:TYR:CE1	8:I:88:GLN:HB3	1.97	0.99
1:A:897:TYR:CD1	8:I:88:GLN:HB3	2.07	0.89
1:A:656:GLU:HG3	8:I:70:ARG:NH2	1.88	0.88
1:A:947:GLU:HG2	8:I:92:ARG:HH11	1.36	0.84

There are no symmetry-related clashes.

5.3 Torsion angles

5.3.1 Protein backbone

In the following table, the Percentiles column shows the percent Ramachandran outliers of the chain as a percentile score with respect to all PDB entries followed by that with respect to all EM entries.

The Analysed column shows the number of residues for which the backbone conformation was analysed, and the total number of residues.

Mol	Chain	Analysed	Favoured	Allowed	Outliers	Percentiles	
1	A	822/2032 (40%)	776 (94%)	46 (6%)	0	100	100
2	C	283/319 (89%)	274 (97%)	9 (3%)	0	100	100
3	F	73/144 (51%)	69 (94%)	4 (6%)	0	100	100
4	J	61/71 (86%)	58 (95%)	3 (5%)	0	100	100
5	K	106/116 (91%)	101 (95%)	5 (5%)	0	100	100
6	L	43/51 (84%)	39 (91%)	4 (9%)	0	100	100
7	H	139/146 (95%)	126 (91%)	13 (9%)	0	100	100
8	I	93/114 (82%)	87 (94%)	6 (6%)	0	100	100
9	E	207/230 (90%)	194 (94%)	13 (6%)	0	100	100
10	B	951/1169 (81%)	904 (95%)	47 (5%)	0	100	100
All	All	2778/4392 (63%)	2628 (95%)	150 (5%)	0	100	100

There are no Ramachandran outliers to report.

5.3.2 Protein sidechains ⓘ

In the following table, the Percentiles column shows the percent sidechain outliers of the chain as a percentile score with respect to all PDB entries followed by that with respect to all EM entries.

The Analysed column shows the number of residues for which the sidechain conformation was analysed, and the total number of residues.

Mol	Chain	Analysed	Rotameric	Outliers	Percentiles	
1	A	742/1709 (43%)	722 (97%)	20 (3%)	39	63
2	C	253/276 (92%)	246 (97%)	7 (3%)	38	63
3	F	67/128 (52%)	67 (100%)	0	100	100
4	J	56/63 (89%)	56 (100%)	0	100	100
5	K	98/105 (93%)	95 (97%)	3 (3%)	35	61
6	L	40/46 (87%)	38 (95%)	2 (5%)	22	50
7	H	123/127 (97%)	117 (95%)	6 (5%)	22	51
8	I	85/101 (84%)	84 (99%)	1 (1%)	63	74
9	E	190/209 (91%)	184 (97%)	6 (3%)	34	60

Continued on next page...

Continued from previous page...

Mol	Chain	Analysed	Rotameric	Outliers	Percentiles
10	B	844/1026 (82%)	830 (98%)	14 (2%)	53 70
All	All	2498/3790 (66%)	2439 (98%)	59 (2%)	43 65

5 of 59 residues with a non-rotameric sidechain are listed below:

Mol	Chain	Res	Type
5	K	42	ILE
10	B	656	GLU
7	H	131	SER
10	B	553	MET
10	B	265	THR

Sometimes sidechains can be flipped to improve hydrogen bonding and reduce clashes. 5 of 33 such sidechains are listed below:

Mol	Chain	Res	Type
10	B	892	ASN
10	B	900	GLN
10	B	1000	GLN
5	K	88	ASN
4	J	52	HIS

5.3.3 RNA ⓘ

Mol	Chain	Analysed	Backbone Outliers	Pucker Outliers
13	P	3/20 (15%)	0	0

There are no RNA backbone outliers to report.

There are no RNA pucker outliers to report.

5.4 Non-standard residues in protein, DNA, RNA chains ⓘ

There are no non-standard protein/DNA/RNA residues in this entry.

5.5 Carbohydrates ⓘ

There are no oligosaccharides in this entry.

5.6 Ligand geometry

Of 7 ligands modelled in this entry, 7 are monoatomic - leaving 0 for Mogul analysis.

There are no bond length outliers.

There are no bond angle outliers.

There are no chirality outliers.

There are no torsion outliers.

There are no ring outliers.

No monomer is involved in short contacts.

5.7 Other polymers

There are no such residues in this entry.

5.8 Polymer linkage issues

There are no chain breaks in this entry.

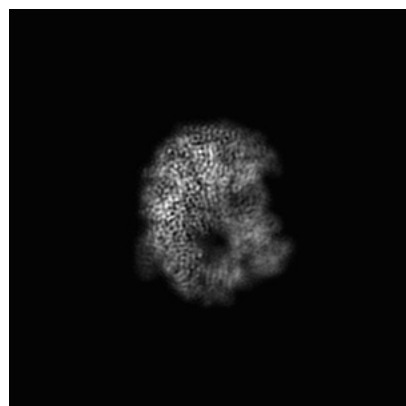
6 Map visualisation [i](#)

This section contains visualisations of the EMDB entry EMD-61965. These allow visual inspection of the internal detail of the map and identification of artifacts.

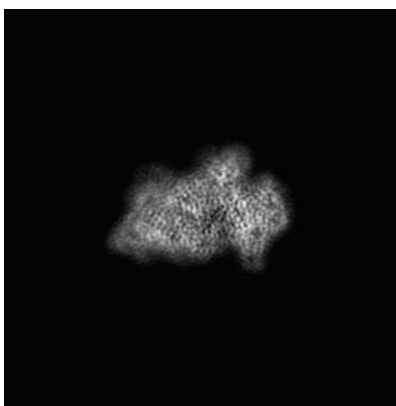
Images derived from a raw map, generated by summing the deposited half-maps, are presented below the corresponding image components of the primary map to allow further visual inspection and comparison with those of the primary map.

6.1 Orthogonal projections [i](#)

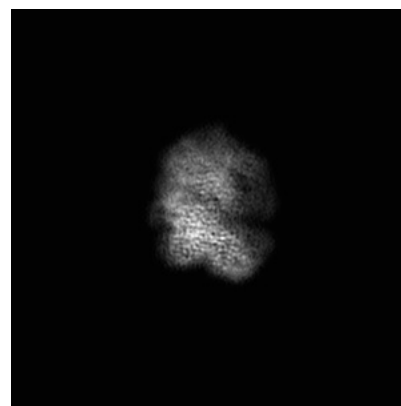
6.1.1 Primary map



X

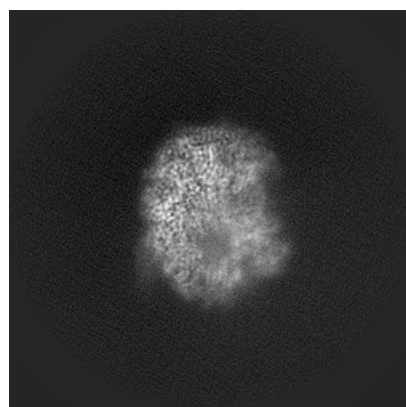


Y

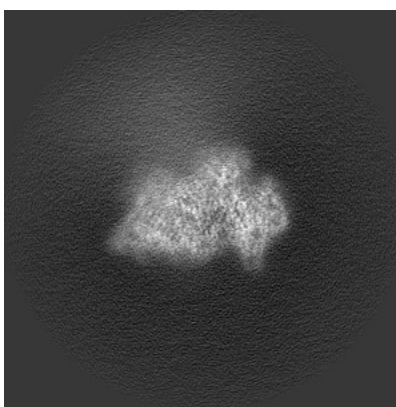


Z

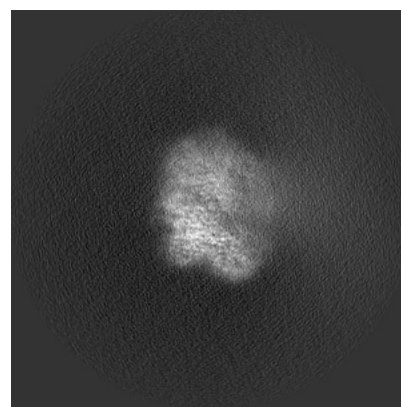
6.1.2 Raw map



X



Y

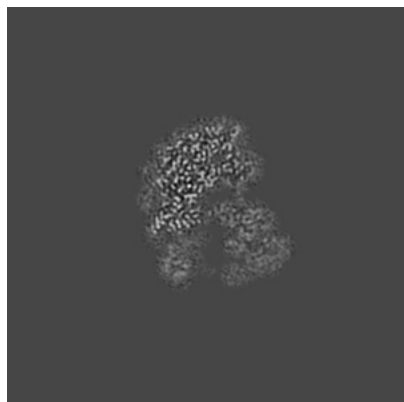


Z

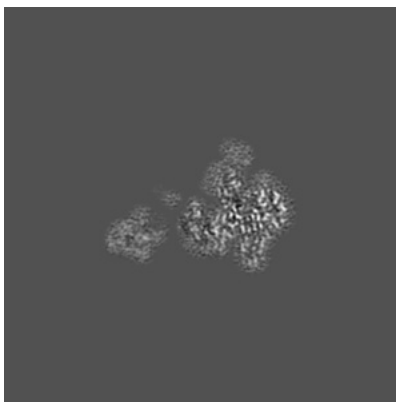
The images above show the map projected in three orthogonal directions.

6.2 Central slices [i](#)

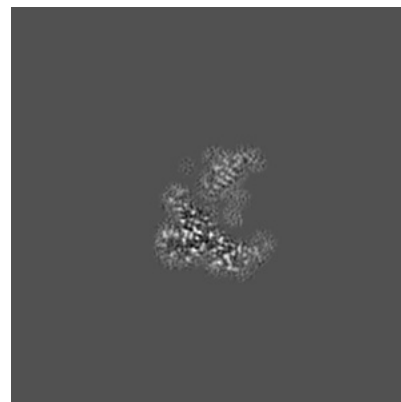
6.2.1 Primary map



X Index: 150

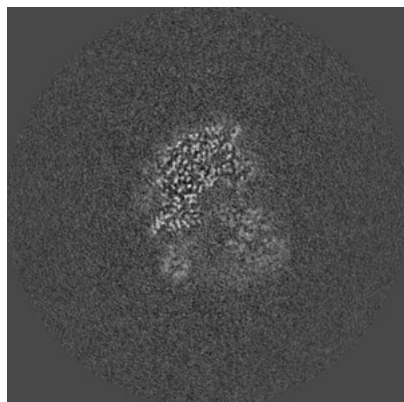


Y Index: 150

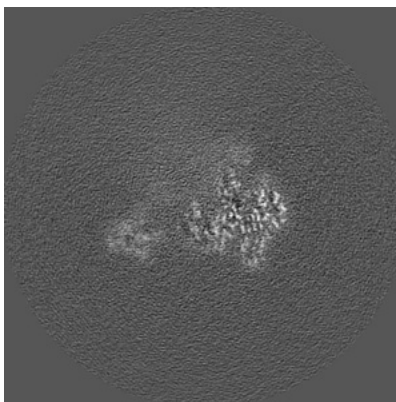


Z Index: 150

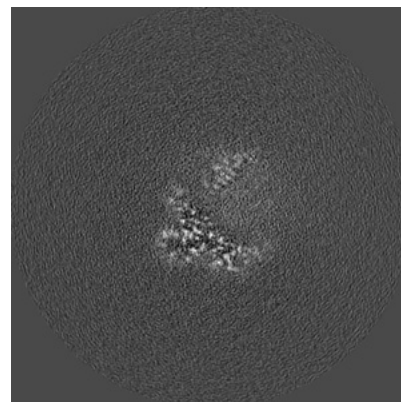
6.2.2 Raw map



X Index: 150



Y Index: 150

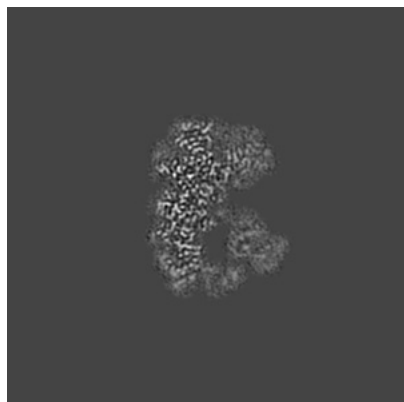


Z Index: 150

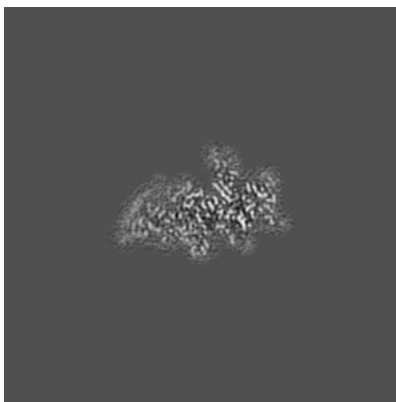
The images above show central slices of the map in three orthogonal directions.

6.3 Largest variance slices [i](#)

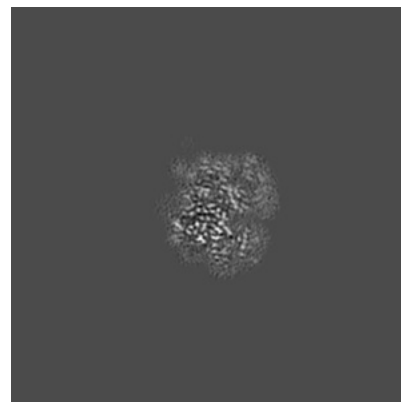
6.3.1 Primary map



X Index: 139

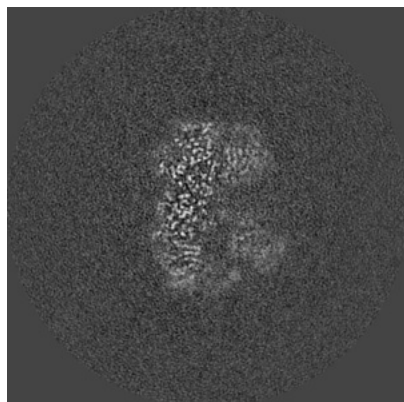


Y Index: 128

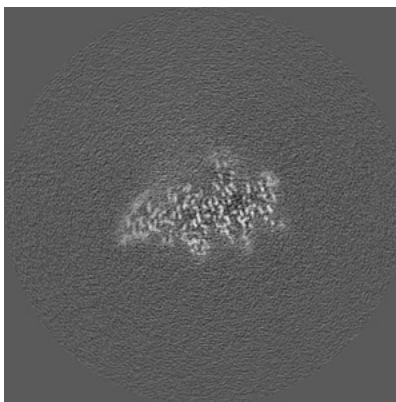


Z Index: 172

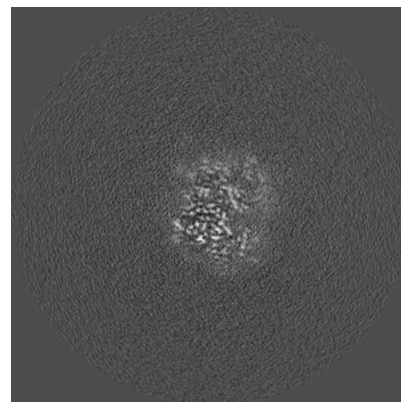
6.3.2 Raw map



X Index: 140



Y Index: 129

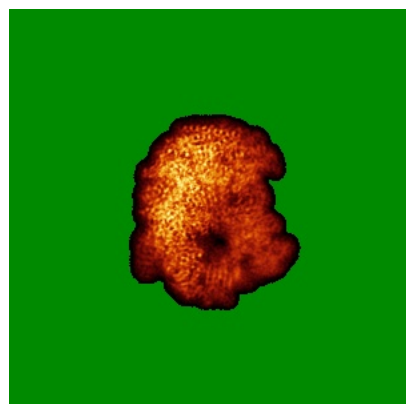


Z Index: 172

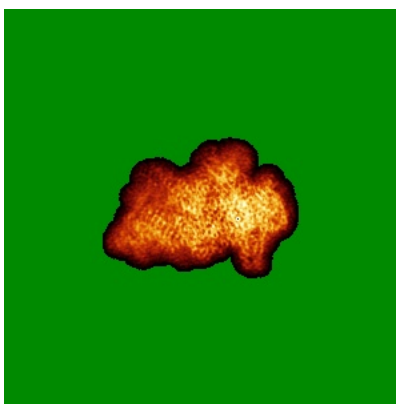
The images above show the largest variance slices of the map in three orthogonal directions.

6.4 Orthogonal standard-deviation projections (False-color) [i](#)

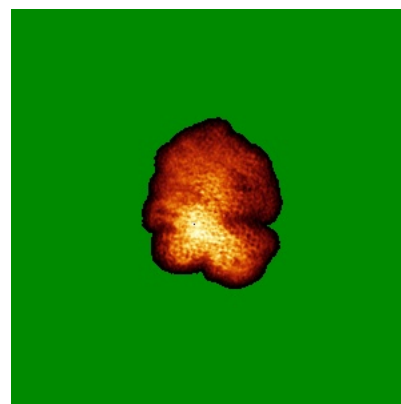
6.4.1 Primary map



X

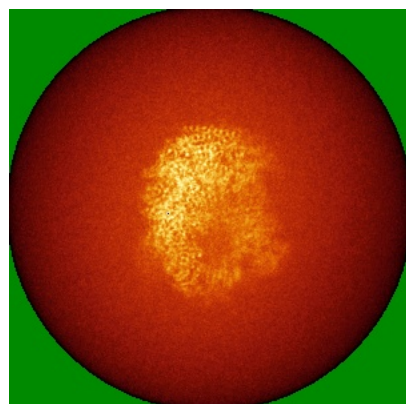


Y

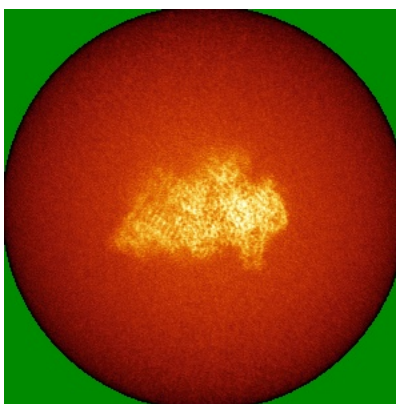


Z

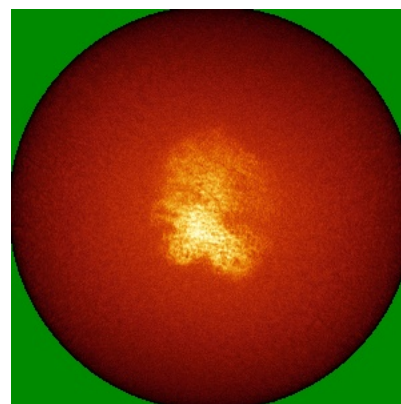
6.4.2 Raw map



X



Y



Z

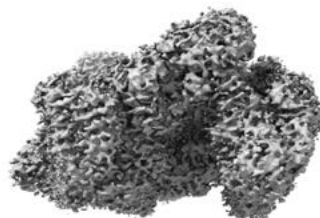
The images above show the map standard deviation projections with false color in three orthogonal directions. Minimum values are shown in green, max in blue, and dark to light orange shades represent small to large values respectively.

6.5 Orthogonal surface views [i](#)

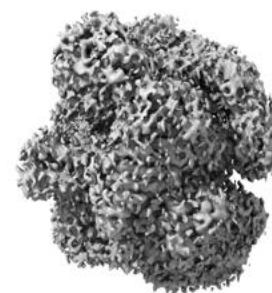
6.5.1 Primary map



X



Y



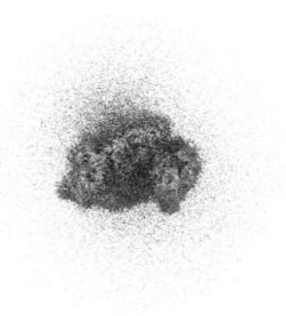
Z

The images above show the 3D surface view of the map at the recommended contour level 0.0112. These images, in conjunction with the slice images, may facilitate assessment of whether an appropriate contour level has been provided.

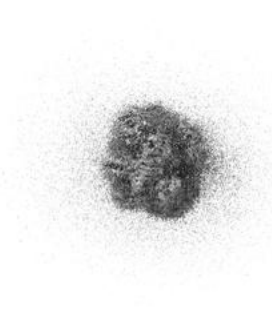
6.5.2 Raw map



X



Y



Z

These images show the 3D surface of the raw map. The raw map's contour level was selected so that its surface encloses the same volume as the primary map does at its recommended contour level.

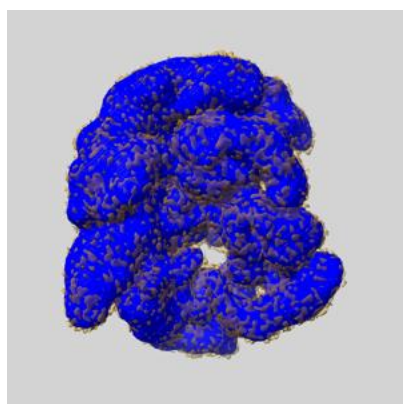
6.6 Mask visualisation [i](#)

This section shows the 3D surface view of the primary map at 50% transparency overlaid with the specified mask at 0% transparency

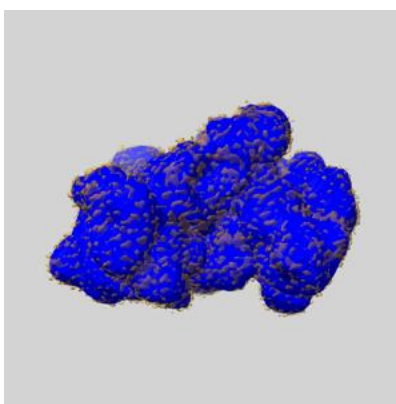
A mask typically either:

- Encompasses the whole structure
- Separates out a domain, a functional unit, a monomer or an area of interest from a larger structure

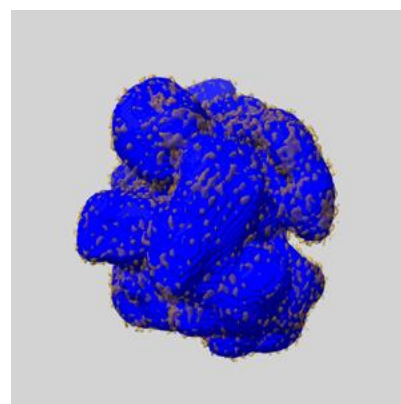
6.6.1 emd_61965_msk_1.map [i](#)



X



Y

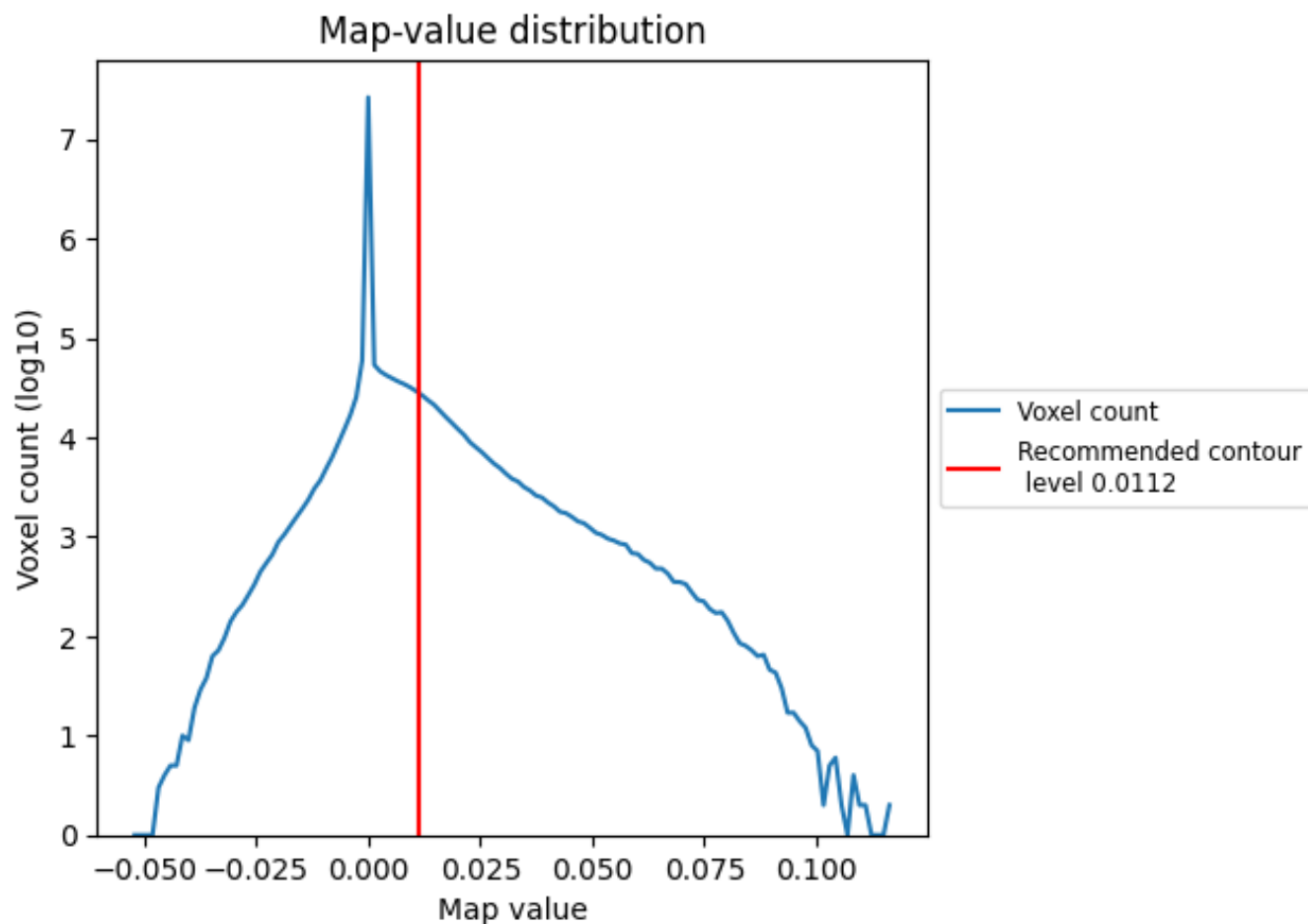


Z

7 Map analysis [i](#)

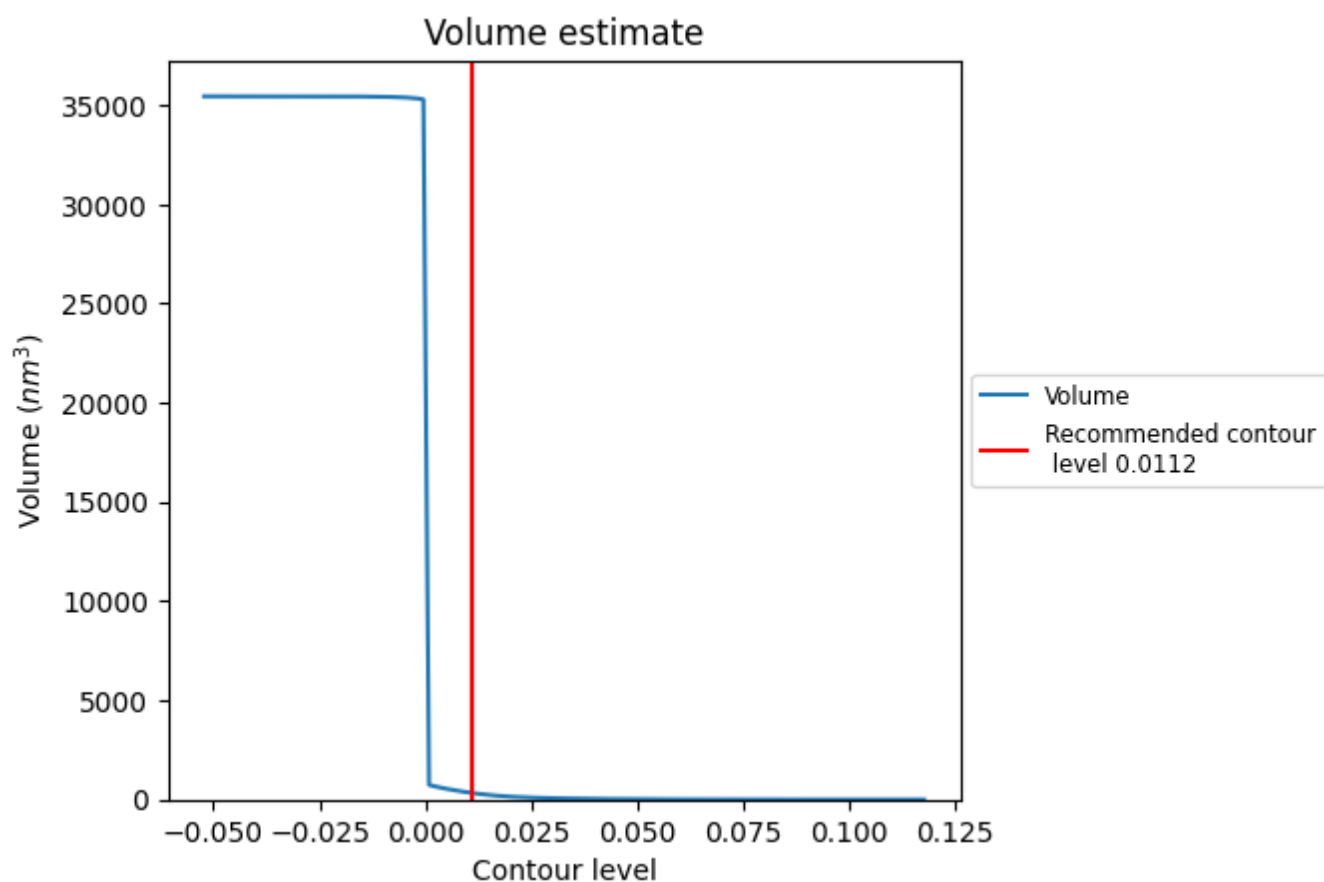
This section contains the results of statistical analysis of the map.

7.1 Map-value distribution [i](#)



The map-value distribution is plotted in 128 intervals along the x-axis. The y-axis is logarithmic. A spike in this graph at zero usually indicates that the volume has been masked.

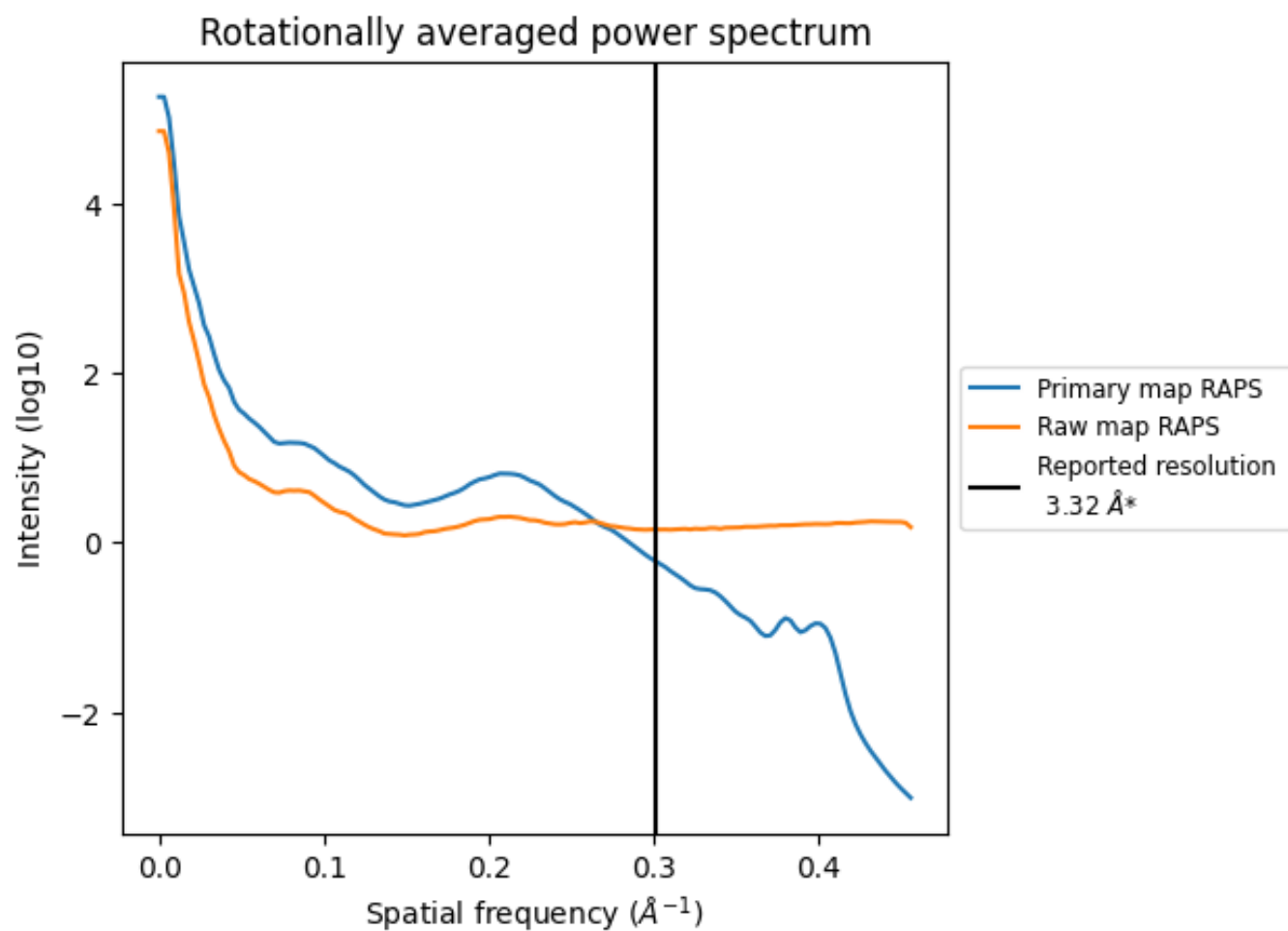
7.2 Volume estimate [i](#)



The volume at the recommended contour level is 327 nm^3 ; this corresponds to an approximate mass of 296 kDa.

The volume estimate graph shows how the enclosed volume varies with the contour level. The recommended contour level is shown as a vertical line and the intersection between the line and the curve gives the volume of the enclosed surface at the given level.

7.3 Rotationally averaged power spectrum ⓘ

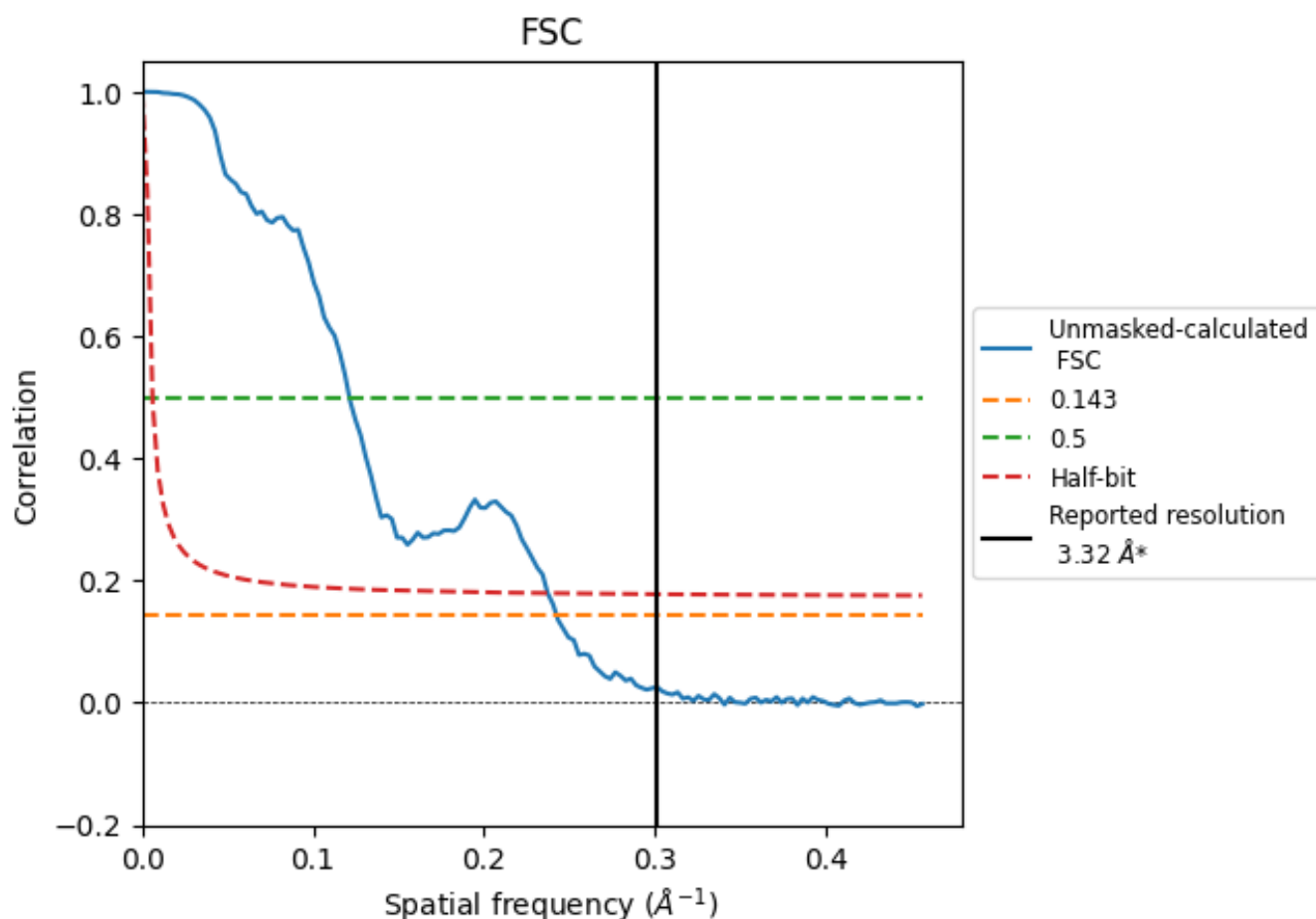


*Reported resolution corresponds to spatial frequency of 0.301 Å⁻¹

8 Fourier-Shell correlation [i](#)

Fourier-Shell Correlation (FSC) is the most commonly used method to estimate the resolution of single-particle and subtomogram-averaged maps. The shape of the curve depends on the imposed symmetry, mask and whether or not the two 3D reconstructions used were processed from a common reference. The reported resolution is shown as a black line. A curve is displayed for the half-bit criterion in addition to lines showing the 0.143 gold standard cut-off and 0.5 cut-off.

8.1 FSC [i](#)



*Reported resolution corresponds to spatial frequency of 0.301 Å⁻¹

8.2 Resolution estimates [i](#)

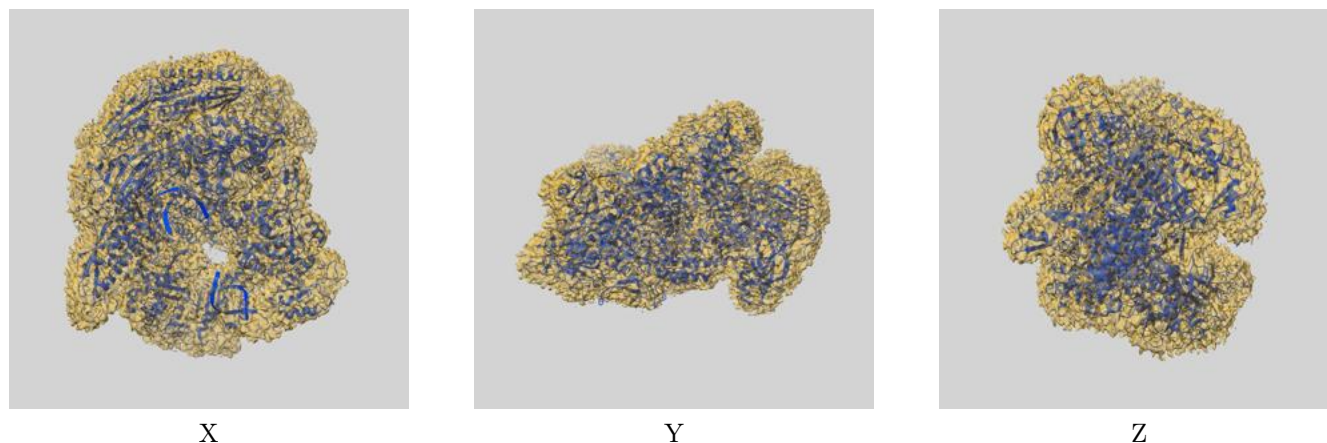
Resolution estimate (Å)	Estimation criterion (FSC cut-off)		
	0.143	0.5	Half-bit
Reported by author	3.32	-	-
Author-provided FSC curve	-	-	-
Unmasked-calculated*	4.12	8.24	4.21

*Resolution estimate based on FSC curve calculated by comparison of deposited half-maps. The value from deposited half-maps intersecting FSC 0.143 CUT-OFF 4.12 differs from the reported value 3.32 by more than 10 %

9 Map-model fit [i](#)

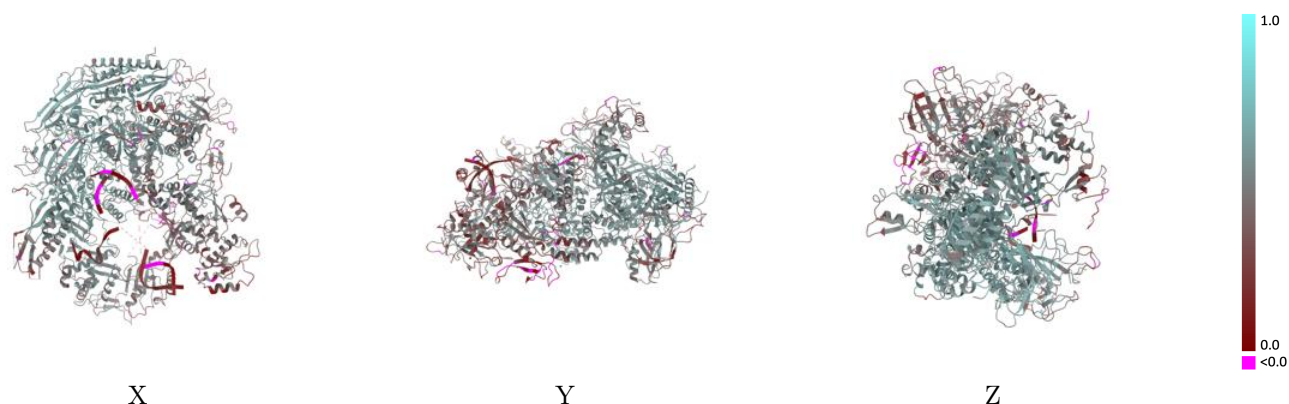
This section contains information regarding the fit between EMDB map EMD-61965 and PDB model 9K15. Per-residue inclusion information can be found in [section 3](#) on [page 8](#).

9.1 Map-model overlay [i](#)



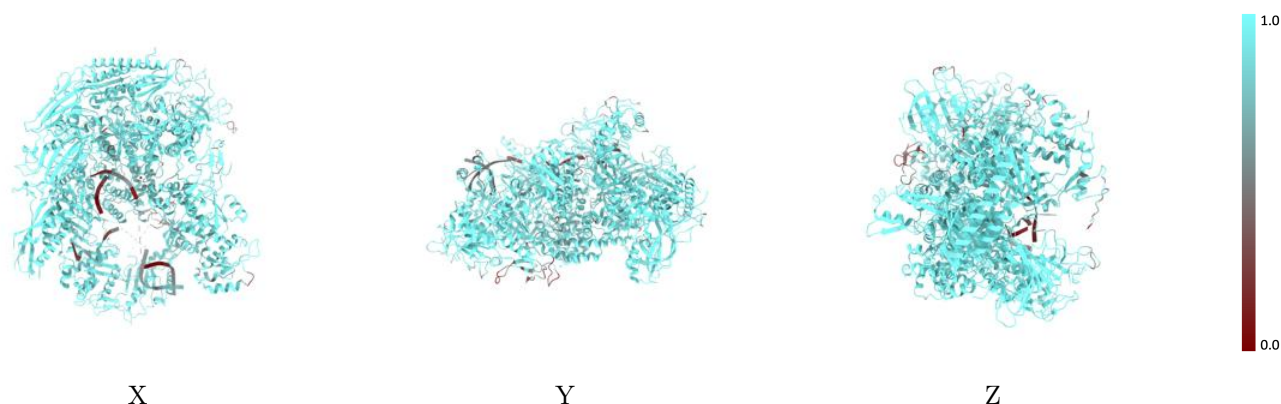
The images above show the 3D surface view of the map at the recommended contour level 0.0112 at 50% transparency in yellow overlaid with a ribbon representation of the model coloured in blue. These images allow for the visual assessment of the quality of fit between the atomic model and the map.

9.2 Q-score mapped to coordinate model [i](#)



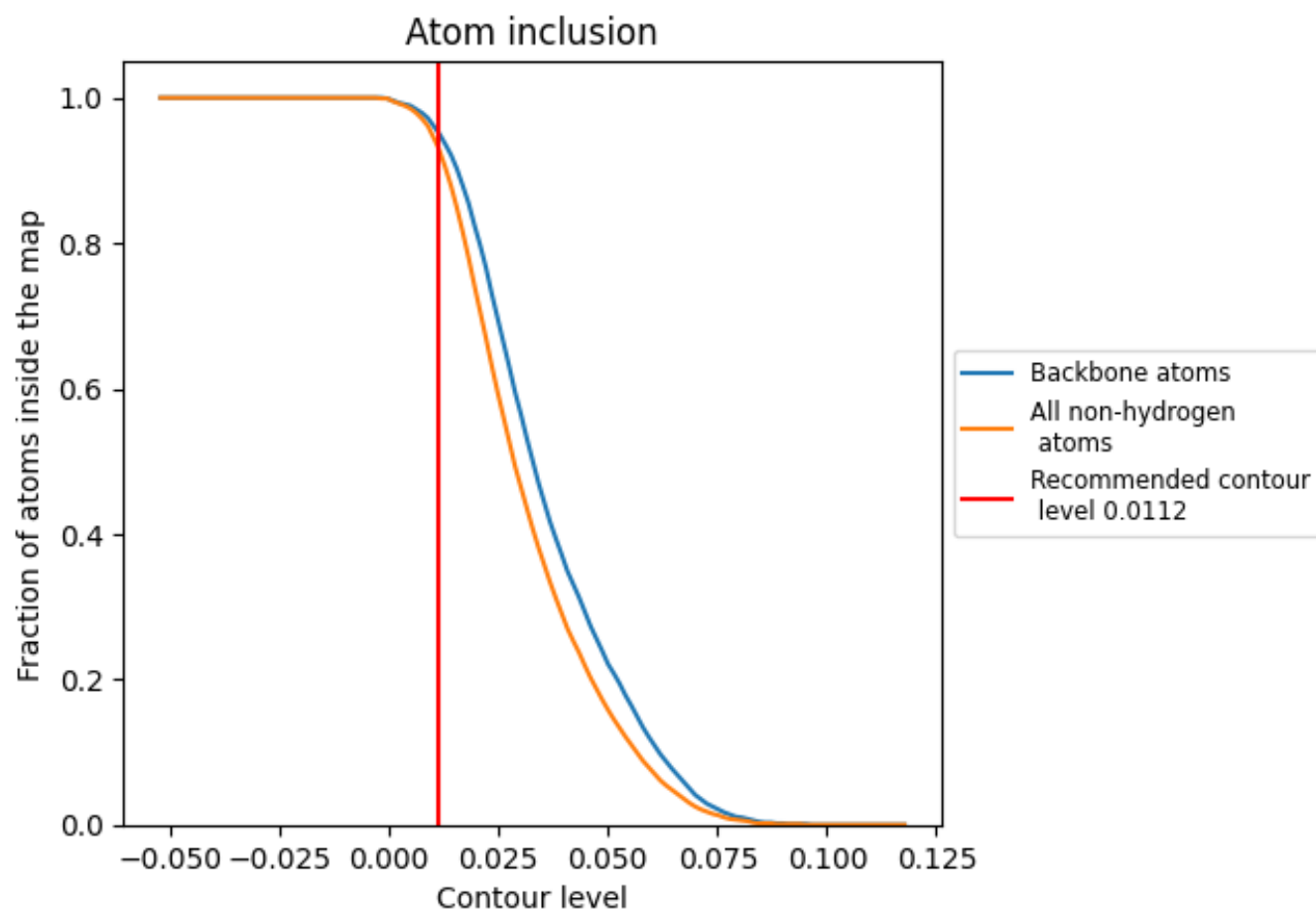
The images above show the model with each residue coloured according its Q-score. This shows their resolvability in the map with higher Q-score values reflecting better resolvability. Please note: Q-score is calculating the resolvability of atoms, and thus high values are only expected at resolutions at which atoms can be resolved. Low Q-score values may therefore be expected for many entries.

9.3 Atom inclusion mapped to coordinate model [i](#)



The images above show the model with each residue coloured according to its atom inclusion. This shows to what extent they are inside the map at the recommended contour level (0.0112).



















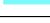









9.4 Atom inclusion [i](#)



At the recommended contour level, 95% of all backbone atoms, 93% of all non-hydrogen atoms, are inside the map.

9.5 Map-model fit summary

The table lists the average atom inclusion at the recommended contour level (0.0112) and Q-score for the entire model and for each chain.

Chain	Atom inclusion	Q-score
All	 0.9320	 0.4740
A	 0.9300	 0.4500
B	 0.9790	 0.5440
C	 0.9930	 0.5610
E	 0.9140	 0.3700
F	 0.9160	 0.4330
H	 0.9080	 0.3890
I	 0.7280	 0.2570
J	 0.9960	 0.5970
K	 0.9780	 0.5440
L	 0.9830	 0.5120
N	 0.5860	 0.1840
P	 0.1410	 0.0510
T	 0.2760	 0.0210

