



wwPDB X-ray Structure Validation Summary Report ⓘ

May 29, 2020 – 08:39 am BST

PDB ID : 1IVH
Title : STRUCTURE OF HUMAN ISOVALERYL-COA DEHYDROGENASE AT
2.6 ANGSTROMS RESOLUTION: STRUCTURAL BASIS FOR SUB-
STRATE SPECIFICITY
Authors : Tiffany, K.A.; Roberts, D.L.; Wang, M.; Paschke, R.; Mohsen, A.-W.A.; Vock-
ley, J.; Kim, J.J.P.
Deposited on : 1997-05-15
Resolution : 2.60 Å(reported)

This is a wwPDB X-ray Structure Validation Summary Report for a publicly released PDB entry.

We welcome your comments at validation@mail.wwpdb.org

A user guide is available at

<https://www.wwpdb.org/validation/2017/XrayValidationReportHelp>

with specific help available everywhere you see the ⓘ symbol.

The following versions of software and data (see [references ⓘ](#)) were used in the production of this report:

MolProbity	:	4.02b-467
Mogul	:	1.8.5 (274361), CSD as541be (2020)
Xtriage (Phenix)	:	NOT EXECUTED
EDS	:	NOT EXECUTED
buster-report	:	1.1.7 (2018)
Percentile statistics	:	20191225.v01 (using entries in the PDB archive December 25th 2019)
Ideal geometry (proteins)	:	Engh & Huber (2001)
Ideal geometry (DNA, RNA)	:	Parkinson et al. (1996)
Validation Pipeline (wwPDB-VP)	:	2.11

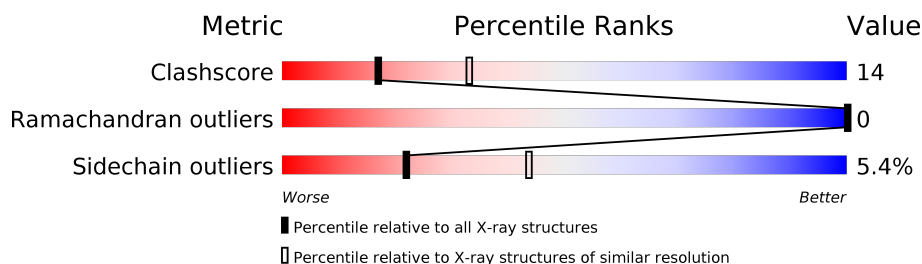
1 Overall quality at a glance

The following experimental techniques were used to determine the structure:

X-RAY DIFFRACTION

The reported resolution of this entry is 2.60 Å.

Percentile scores (ranging between 0-100) for global validation metrics of the entry are shown in the following graphic. The table shows the number of entries on which the scores are based.



Metric	Whole archive (#Entries)	Similar resolution (#Entries, resolution range(Å))
Clashscore	141614	3518 (2.60-2.60)
Ramachandran outliers	138981	3455 (2.60-2.60)
Sidechain outliers	138945	3455 (2.60-2.60)

The table below summarises the geometric issues observed across the polymeric chains and their fit to the electron density. The red, orange, yellow and green segments on the lower bar indicate the fraction of residues that contain outliers for ≥ 3 , 2, 1 and 0 types of geometric quality criteria respectively. A grey segment represents the fraction of residues that are not modelled. The numeric value for each fraction is indicated below the corresponding segment, with a dot representing fractions $\leq 5\%$.

Note EDS was not executed.

Mol	Chain	Length	Quality of chain
1	A	394	 69% 26% . .
1	B	394	 68% 28% . .
1	C	394	 68% 30% . .
1	D	394	 67% 30% . .

2 Entry composition ⓘ

There are 4 unique types of molecules in this entry. The entry contains 12463 atoms, of which 0 are hydrogens and 0 are deuteriums.

In the tables below, the ZeroOcc column contains the number of atoms modelled with zero occupancy, the AltConf column contains the number of residues with at least one atom in alternate conformation and the Trace column contains the number of residues modelled with at most 2 atoms.

- Molecule 1 is a protein called ISOVALERYL-COA DEHYDROGENASE.

Mol	Chain	Residues	Atoms					ZeroOcc	AltConf	Trace
1	A	387	Total	C	N	O	S	0	0	0
			2960	1868	518	552	22			
1	B	387	Total	C	N	O	S	0	0	0
			2960	1868	518	552	22			
1	C	387	Total	C	N	O	S	0	0	0
			2960	1868	518	552	22			
1	D	387	Total	C	N	O	S	0	0	0
			2960	1868	518	552	22			

- Molecule 2 is FLAVIN-ADENINE DINUCLEOTIDE (three-letter code: FAD) (formula: C₂₇H₃₃N₉O₁₅P₂).



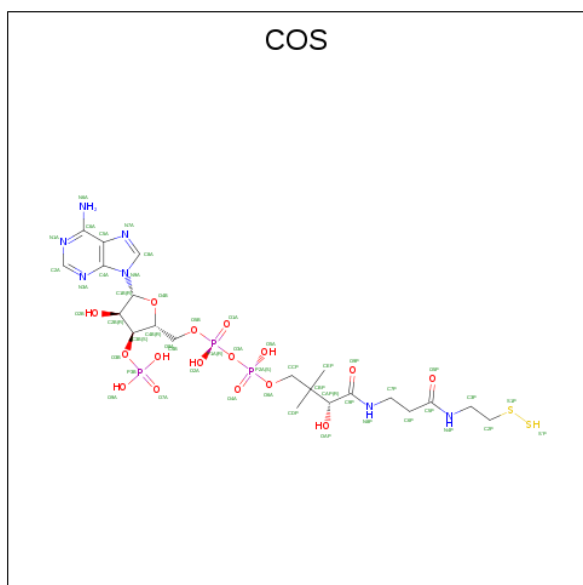
Mol	Chain	Residues	Atoms					ZeroOcc	AltConf
2	A	1	Total	C	N	O	P	0	0
			53	27	9	15	2		
2	B	1	Total	C	N	O	P	0	0
			53	27	9	15	2		

Continued on next page...

Continued from previous page...

Mol	Chain	Residues	Atoms					ZeroOcc	AltConf
2	C	1	Total	C	N	O	P	0	0
			53	27	9	15	2		
2	D	1	Total	C	N	O	P	0	0
			53	27	9	15	2		

- Molecule 3 is COENZYME A PERSULFIDE (three-letter code: COS) (formula: $C_{21}H_{36}N_7O_{16}P_3S_2$).



Mol	Chain	Residues	Atoms						ZeroOcc	AltConf
3	A	1	Total	C	N	O	P	S	0	0
			49	21	7	16	3	2		
3	B	1	Total	C	N	O	P	S	0	0
			49	21	7	16	3	2		
3	C	1	Total	C	N	O	P	S	0	0
			49	21	7	16	3	2		
3	D	1	Total	C	N	O	P	S	0	0
			49	21	7	16	3	2		

- Molecule 4 is water.

Mol	Chain	Residues	Atoms		ZeroOcc	AltConf
4	A	50	Total	O	0	0
			50	50		
4	B	53	Total	O	0	0
			53	53		
4	C	51	Total	O	0	0
			51	51		

Continued on next page...

Continued from previous page...

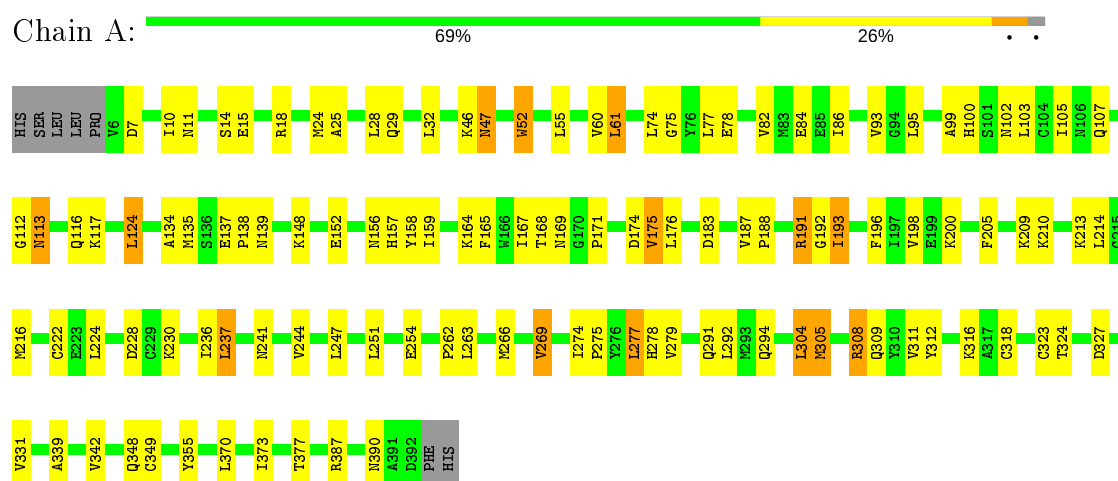
Mol	Chain	Residues	Atoms		ZeroOcc	AltConf
4	D	61	Total	O	0	0
			61	61		

3 Residue-property plots

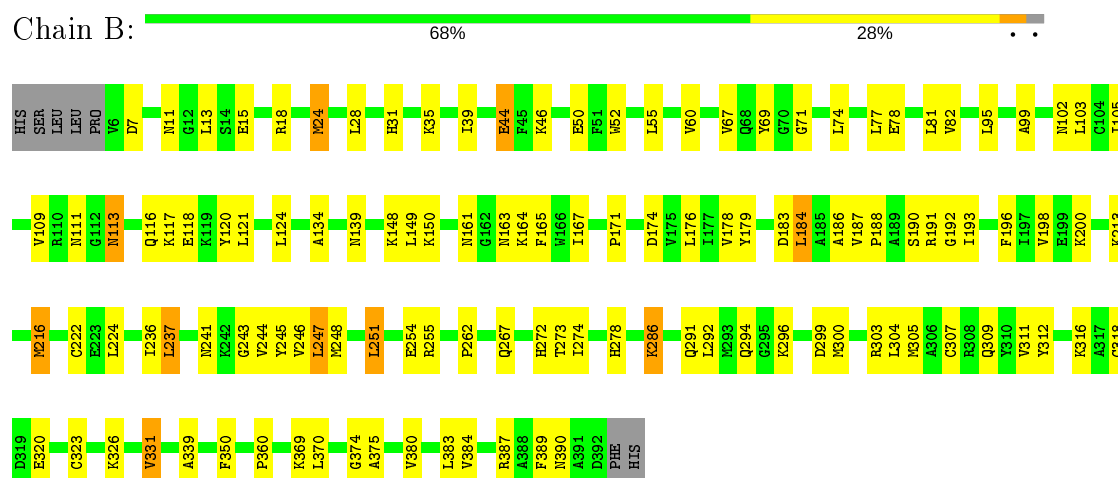
These plots are drawn for all protein, RNA and DNA chains in the entry. The first graphic for a chain summarises the proportions of the various outlier classes displayed in the second graphic. The second graphic shows the sequence view annotated by issues in geometry. Residues are color-coded according to the number of geometric quality criteria for which they contain at least one outlier: green = 0, yellow = 1, orange = 2 and red = 3 or more. Stretches of 2 or more consecutive residues without any outlier are shown as a green connector. Residues present in the sample, but not in the model, are shown in grey.

Note EDS was not executed.

• Molecule 1: ISOVALERYL-COA DEHYDROGENASE

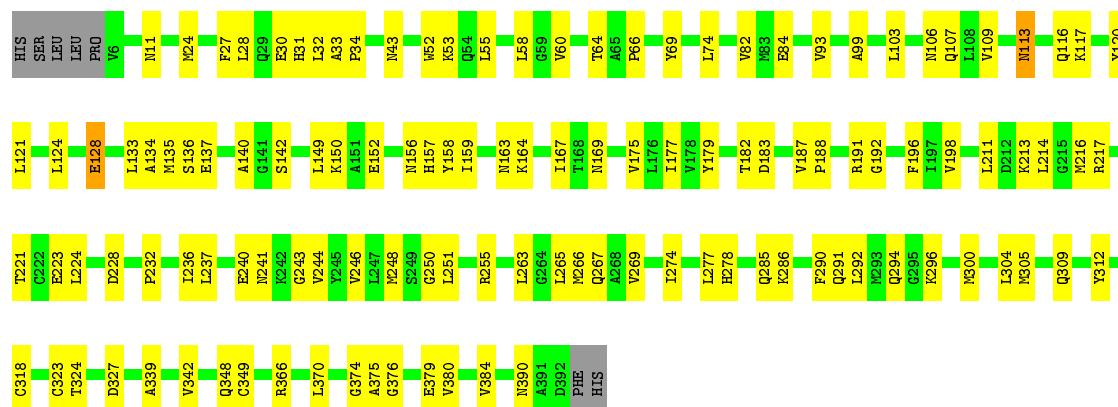


• Molecule 1: ISOVALERYL-COA DEHYDROGENASE



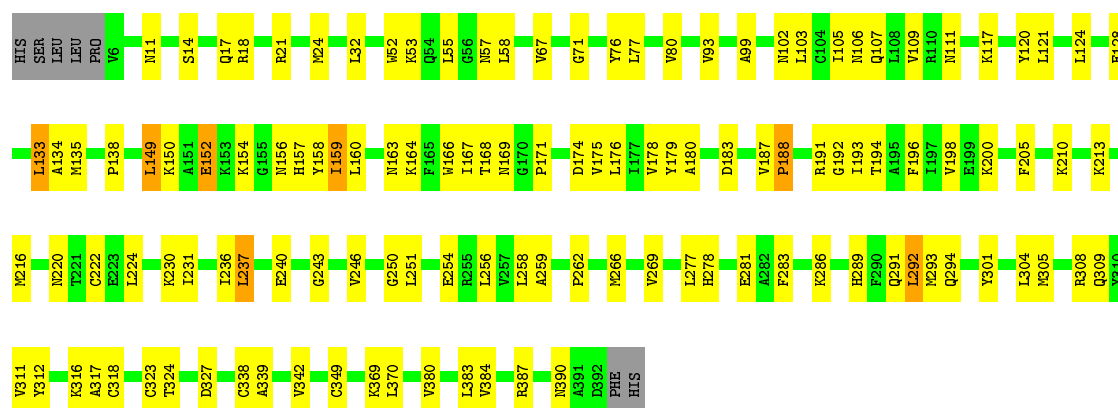
• Molecule 1: ISOVALERYL-COA DEHYDROGENASE





• Molecule 1: ISOVALERYL-COA DEHYDROGENASE

Chain D: 67% 30%



4 Data and refinement statistics

Xtriage (Phenix) and EDS were not executed - this section is therefore incomplete.

Property	Value	Source
Space group	P 21 21 21	Depositor
Cell constants a, b, c, α , β , γ	94.00 Å 97.70 Å 181.70 Å 90.00° 90.00° 90.00°	Depositor
Resolution (Å)	10.00 – 2.60	Depositor
% Data completeness (in resolution range)	82.5 (10.00-2.60)	Depositor
R_{merge}	0.07	Depositor
R_{sym}	0.07	Depositor
Refinement program	X-PLOR 3.1	Depositor
R, R_{free}	0.207 , 0.288	Depositor
Estimated twinning fraction	No twinning to report.	Xtriage
Total number of atoms	12463	wwPDB-VP
Average B, all atoms (Å ²)	11.0	wwPDB-VP

5 Model quality [i](#)

5.1 Standard geometry [i](#)

Bond lengths and bond angles in the following residue types are not validated in this section: COS, FAD

The Z score for a bond length (or angle) is the number of standard deviations the observed value is removed from the expected value. A bond length (or angle) with $|Z| > 5$ is considered an outlier worth inspection. RMSZ is the root-mean-square of all Z scores of the bond lengths (or angles).

Mol	Chain	Bond lengths		Bond angles	
		RMSZ	# Z >5	RMSZ	# Z >5
1	A	0.41	0/3011	0.62	0/4056
1	B	0.41	0/3011	0.62	1/4056 (0.0%)
1	C	0.40	0/3011	0.62	0/4056
1	D	0.41	0/3011	0.62	1/4056 (0.0%)
All	All	0.41	0/12044	0.62	2/16224 (0.0%)

There are no bond length outliers.

All (2) bond angle outliers are listed below:

Mol	Chain	Res	Type	Atoms	Z	Observed(°)	Ideal(°)
1	B	247	LEU	CA-CB-CG	6.51	130.27	115.30
1	D	188	PRO	N-CA-C	-5.01	99.06	112.10

There are no chirality outliers.

There are no planarity outliers.

5.2 Too-close contacts [i](#)

In the following table, the Non-H and H(model) columns list the number of non-hydrogen atoms and hydrogen atoms in the chain respectively. The H(added) column lists the number of hydrogen atoms added and optimized by MolProbity. The Clashes column lists the number of clashes within the asymmetric unit, whereas Symm-Clashes lists symmetry related clashes.

Mol	Chain	Non-H	H(model)	H(added)	Clashes	Symm-Clashes
1	A	2960	0	2964	86	0
1	B	2960	0	2964	85	0
1	C	2960	0	2964	92	0
1	D	2960	0	2964	92	0
2	A	53	0	31	0	0

Continued on next page...

Continued from previous page...

Mol	Chain	Non-H	H(model)	H(added)	Clashes	Symm-Clashes
2	B	53	0	31	0	0
2	C	53	0	31	0	0
2	D	53	0	31	1	0
3	A	49	0	32	1	0
3	B	49	0	32	0	0
3	C	49	0	32	3	0
3	D	49	0	32	2	0
4	A	50	0	0	0	0
4	B	53	0	0	1	0
4	C	51	0	0	3	0
4	D	61	0	0	2	0
All	All	12463	0	12108	336	0

The all-atom clashscore is defined as the number of clashes found per 1000 atoms (including hydrogen atoms). The all-atom clashscore for this structure is 14.

The worst 5 of 336 close contacts within the same asymmetric unit are listed below, sorted by their clash magnitude.

Atom-1	Atom-2	Interatomic distance (Å)	Clash overlap (Å)
1:B:187:VAL:HB	1:B:188:PRO:HD3	1.37	1.06
1:D:187:VAL:HB	1:D:188:PRO:HD3	1.39	1.04
1:A:187:VAL:HB	1:A:188:PRO:HD3	1.40	1.02
1:C:187:VAL:HB	1:C:188:PRO:HD3	1.41	1.00
1:C:124:LEU:HD21	1:C:175:VAL:HG11	1.48	0.95

There are no symmetry-related clashes.

5.3 Torsion angles [i](#)

5.3.1 Protein backbone [i](#)

In the following table, the Percentiles column shows the percent Ramachandran outliers of the chain as a percentile score with respect to all X-ray entries followed by that with respect to entries of similar resolution.

The Analysed column shows the number of residues for which the backbone conformation was analysed, and the total number of residues.

Mol	Chain	Analysed	Favoured	Allowed	Outliers	Percentiles
1	A	385/394 (98%)	367 (95%)	18 (5%)	0	100 100

Continued on next page...

Continued from previous page...

Mol	Chain	Analysed	Favoured	Allowed	Outliers	Percentiles	
1	B	385/394 (98%)	369 (96%)	16 (4%)	0	100	100
1	C	385/394 (98%)	369 (96%)	16 (4%)	0	100	100
1	D	385/394 (98%)	365 (95%)	20 (5%)	0	100	100
All	All	1540/1576 (98%)	1470 (96%)	70 (4%)	0	100	100

There are no Ramachandran outliers to report.

5.3.2 Protein sidechains ⓘ

In the following table, the Percentiles column shows the percent sidechain outliers of the chain as a percentile score with respect to all X-ray entries followed by that with respect to entries of similar resolution.

The Analysed column shows the number of residues for which the sidechain conformation was analysed, and the total number of residues.

Mol	Chain	Analysed	Rotameric	Outliers	Percentiles	
1	A	308/315 (98%)	286 (93%)	22 (7%)	14	29
1	B	308/315 (98%)	289 (94%)	19 (6%)	18	37
1	C	308/315 (98%)	296 (96%)	12 (4%)	32	58
1	D	308/315 (98%)	294 (96%)	14 (4%)	27	52
All	All	1232/1260 (98%)	1165 (95%)	67 (5%)	22	44

5 of 67 residues with a non-rotameric sidechain are listed below:

Mol	Chain	Res	Type
1	B	184	LEU
1	B	292	LEU
1	D	159	ILE
1	B	216	MET
1	B	247	LEU

Some sidechains can be flipped to improve hydrogen bonding and reduce clashes. 5 of 45 such sidechains are listed below:

Mol	Chain	Res	Type
1	B	169	ASN
1	C	107	GLN
1	D	169	ASN

Continued on next page...

Continued from previous page...

Mol	Chain	Res	Type
1	B	278	HIS
1	C	113	ASN

5.3.3 RNA ⓘ

There are no RNA molecules in this entry.

5.4 Non-standard residues in protein, DNA, RNA chains ⓘ

There are no non-standard protein/DNA/RNA residues in this entry.

5.5 Carbohydrates ⓘ

There are no carbohydrates in this entry.

5.6 Ligand geometry ⓘ

8 ligands are modelled in this entry.

In the following table, the Counts columns list the number of bonds (or angles) for which Mogul statistics could be retrieved, the number of bonds (or angles) that are observed in the model and the number of bonds (or angles) that are defined in the Chemical Component Dictionary. The Link column lists molecule types, if any, to which the group is linked. The Z score for a bond length (or angle) is the number of standard deviations the observed value is removed from the expected value. A bond length (or angle) with $|Z| > 2$ is considered an outlier worth inspection. RMSZ is the root-mean-square of all Z scores of the bond lengths (or angles).

Mol	Type	Chain	Res	Link	Bond lengths			Bond angles		
					Counts	RMSZ	# Z > 2	Counts	RMSZ	# Z > 2
3	COS	C	400	-	42,51,51	1.58	5 (11%)	54,76,76	1.20	7 (12%)
2	FAD	A	399	-	51,58,58	1.27	5 (9%)	60,89,89	2.86	14 (23%)
2	FAD	C	399	-	51,58,58	1.21	6 (11%)	60,89,89	3.06	14 (23%)
3	COS	D	400	-	42,51,51	1.47	6 (14%)	54,76,76	1.19	5 (9%)
2	FAD	B	399	-	51,58,58	1.34	8 (15%)	60,89,89	3.06	13 (21%)
2	FAD	D	399	-	51,58,58	1.11	6 (11%)	60,89,89	2.84	13 (21%)
3	COS	B	400	-	42,51,51	1.15	5 (11%)	54,76,76	1.22	7 (12%)
3	COS	A	400	-	42,51,51	1.40	5 (11%)	54,76,76	1.25	6 (11%)

In the following table, the Chirals column lists the number of chiral outliers, the number of chiral

centers analysed, the number of these observed in the model and the number defined in the Chemical Component Dictionary. Similar counts are reported in the Torsion and Rings columns. '-' means no outliers of that kind were identified.

Mol	Type	Chain	Res	Link	Chirals	Torsions	Rings
3	COS	C	400	-	-	9/44/65/65	0/3/3/3
2	FAD	A	399	-	-	2/30/50/50	0/6/6/6
2	FAD	C	399	-	-	2/30/50/50	0/6/6/6
3	COS	D	400	-	-	9/44/65/65	0/3/3/3
2	FAD	B	399	-	-	2/30/50/50	0/6/6/6
2	FAD	D	399	-	-	2/30/50/50	0/6/6/6
3	COS	B	400	-	-	10/44/65/65	0/3/3/3
3	COS	A	400	-	-	9/44/65/65	0/3/3/3

The worst 5 of 46 bond length outliers are listed below:

Mol	Chain	Res	Type	Atoms	Z	Observed(Å)	Ideal(Å)
3	C	400	COS	P3B-O3B	5.62	1.69	1.59
3	D	400	COS	P3B-O3B	4.90	1.68	1.59
3	A	400	COS	O4B-C1B	4.86	1.47	1.41
3	A	400	COS	P3B-O3B	4.65	1.68	1.59
3	D	400	COS	O4B-C1B	4.34	1.47	1.41

The worst 5 of 79 bond angle outliers are listed below:

Mol	Chain	Res	Type	Atoms	Z	Observed(°)	Ideal(°)
2	C	399	FAD	C4-N3-C2	15.72	128.41	115.14
2	B	399	FAD	C4-N3-C2	14.79	127.63	115.14
2	D	399	FAD	C4-N3-C2	13.99	126.95	115.14
2	A	399	FAD	C4-N3-C2	13.40	126.45	115.14
2	B	399	FAD	C10-C4X-N5	10.65	128.62	121.26

There are no chirality outliers.

5 of 45 torsion outliers are listed below:

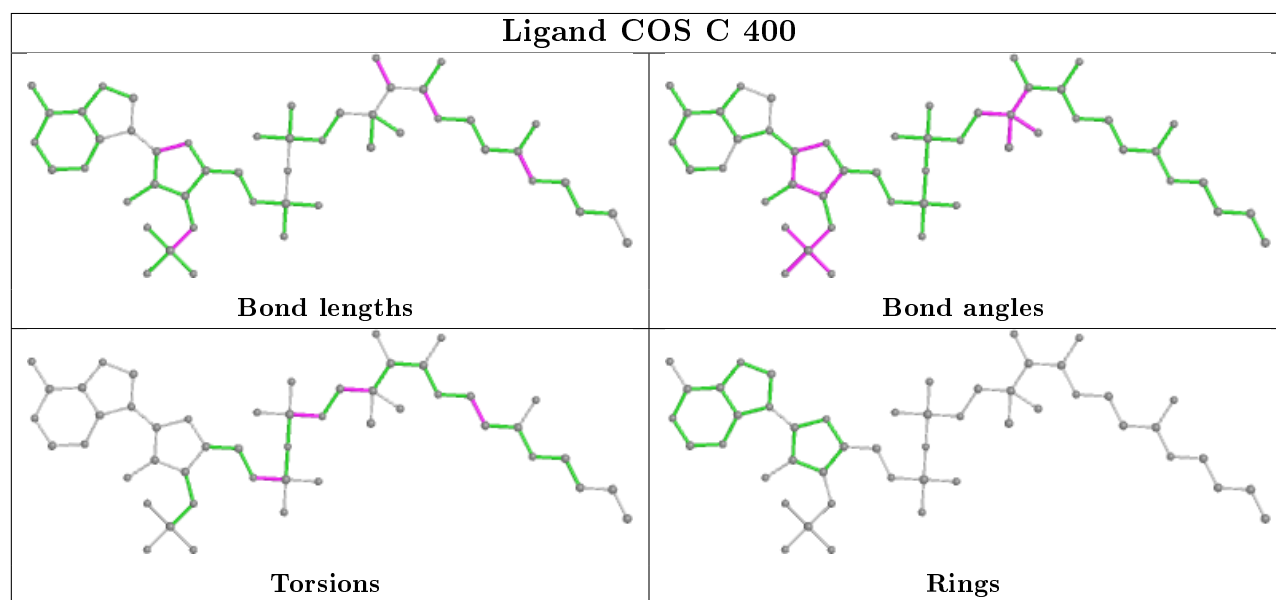
Mol	Chain	Res	Type	Atoms
3	C	400	COS	C5B-O5B-P1A-O1A
3	C	400	COS	CCP-O6A-P2A-O5A
3	C	400	COS	CAP-CBP-CCP-O6A
3	D	400	COS	C5B-O5B-P1A-O1A
3	D	400	COS	C5B-O5B-P1A-O3A

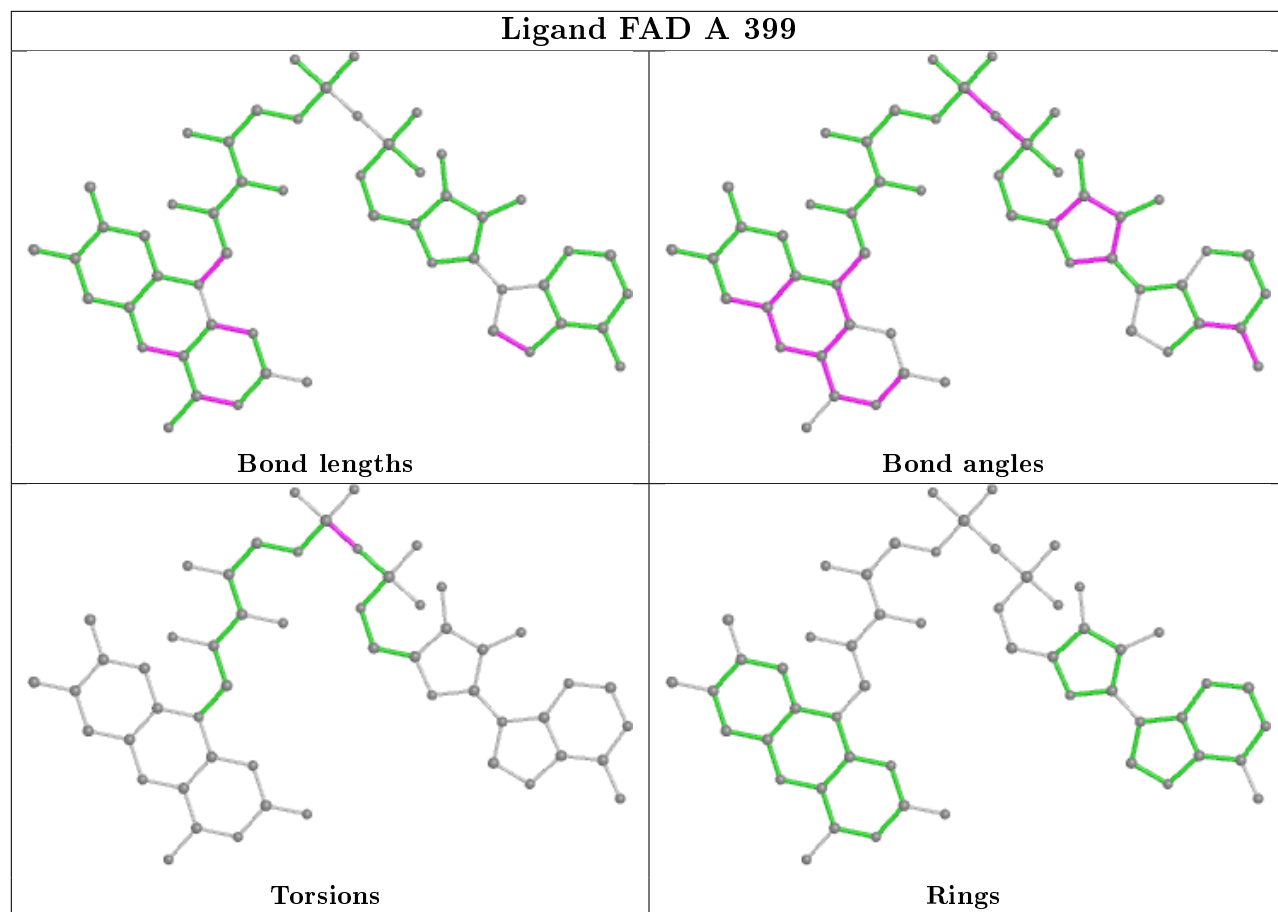
There are no ring outliers.

4 monomers are involved in 7 short contacts:

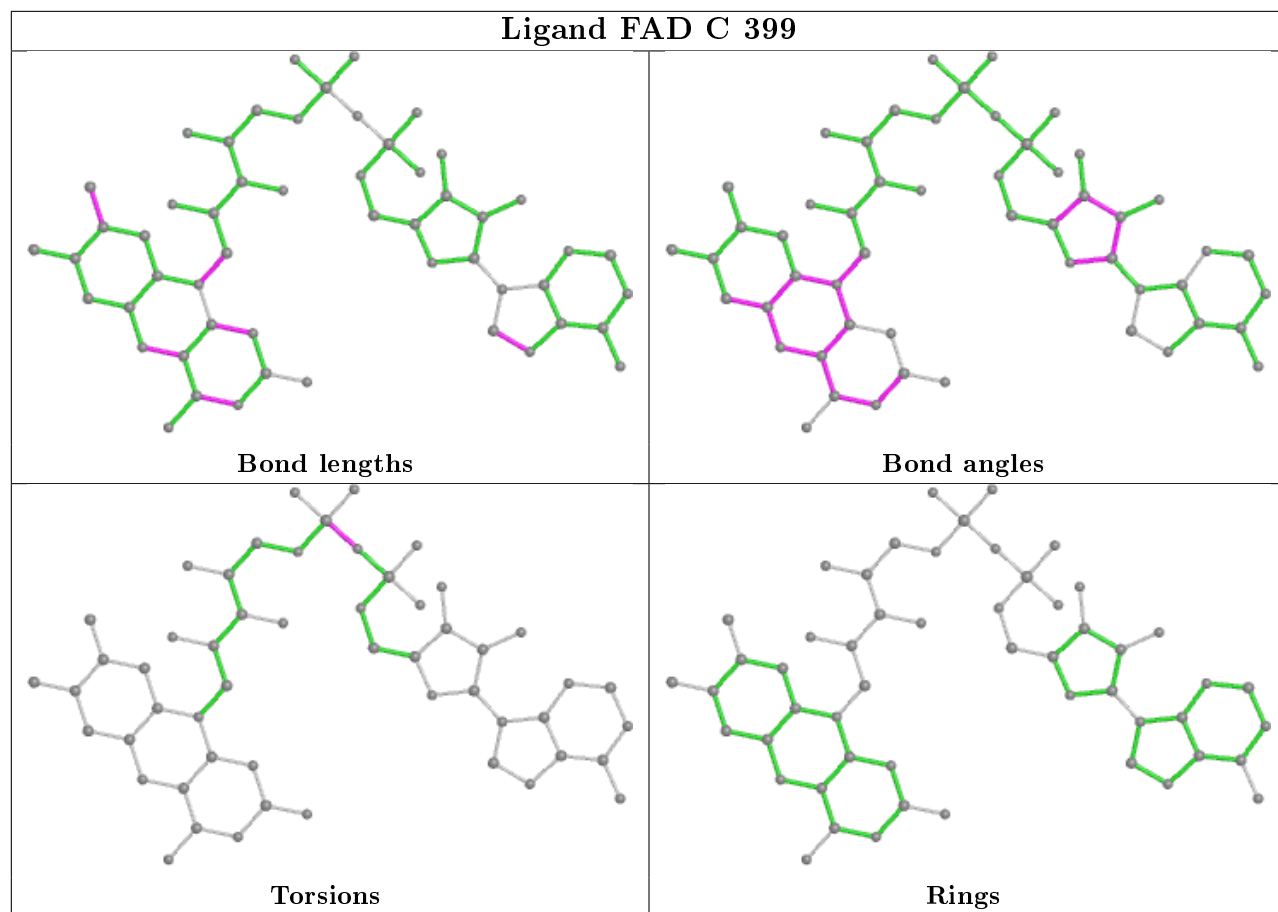
Mol	Chain	Res	Type	Clashes	Symm-Clashes
3	C	400	COS	3	0
3	D	400	COS	2	0
2	D	399	FAD	1	0
3	A	400	COS	1	0

The following is a two-dimensional graphical depiction of Mogul quality analysis of bond lengths, bond angles, torsion angles, and ring geometry for all instances of the Ligand of Interest. In addition, ligands with molecular weight > 250 and outliers as shown on the validation Tables will also be included. For torsion angles, if less than 5% of the Mogul distribution of torsion angles is within 10 degrees of the torsion angle in question, then that torsion angle is considered an outlier. Any bond that is central to one or more torsion angles identified as an outlier by Mogul will be highlighted in the graph. For rings, the root-mean-square deviation (RMSD) between the ring in question and similar rings identified by Mogul is calculated over all ring torsion angles. If the average RMSD is greater than 60 degrees and the minimal RMSD between the ring in question and any Mogul-identified rings is also greater than 60 degrees, then that ring is considered an outlier. The outliers are highlighted in purple. The color gray indicates Mogul did not find sufficient equivalents in the CSD to analyse the geometry.

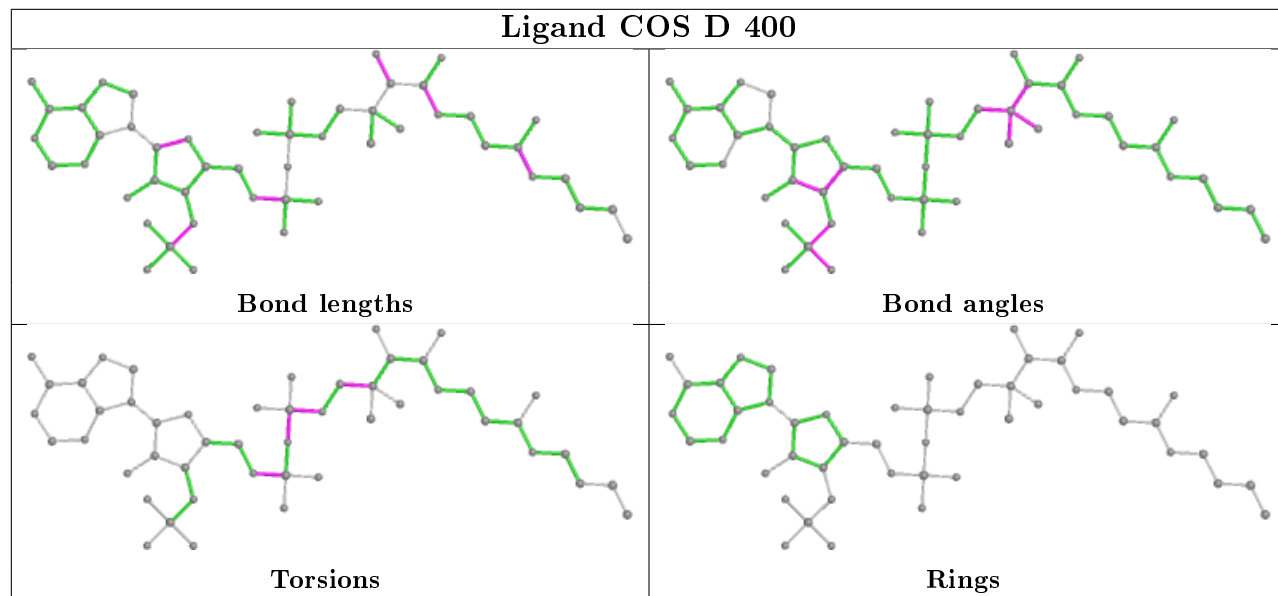




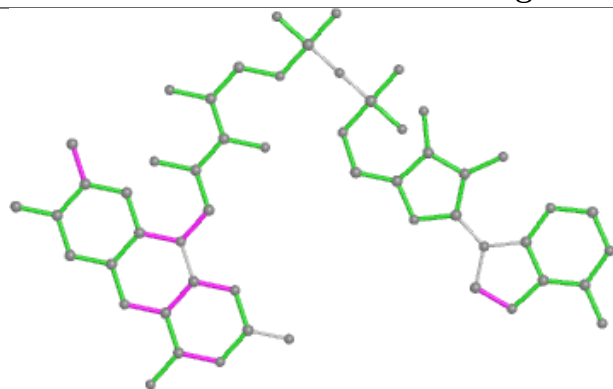
Ligand FAD C 399



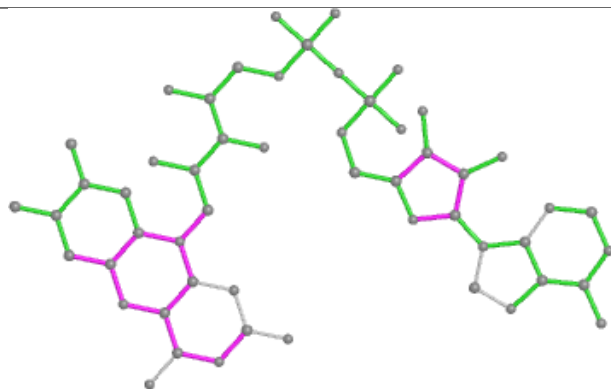
Ligand COS D 400



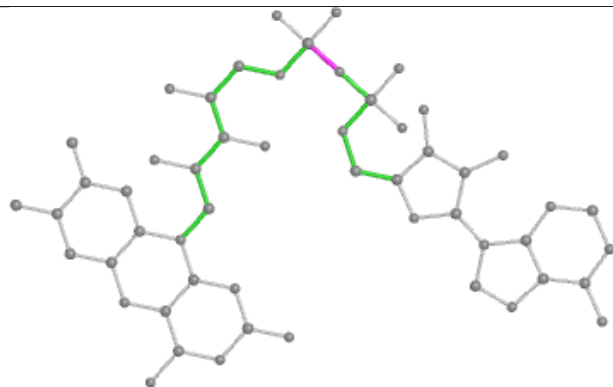
Ligand FAD B 399



Bond lengths



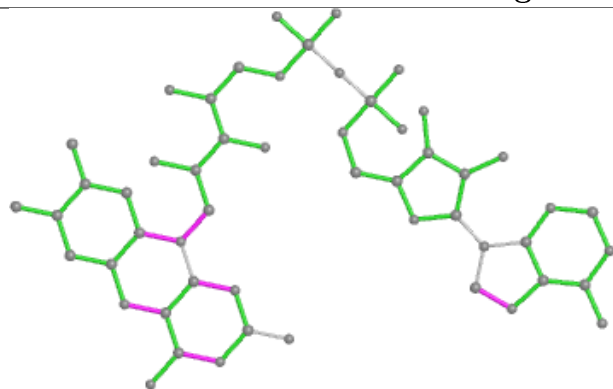
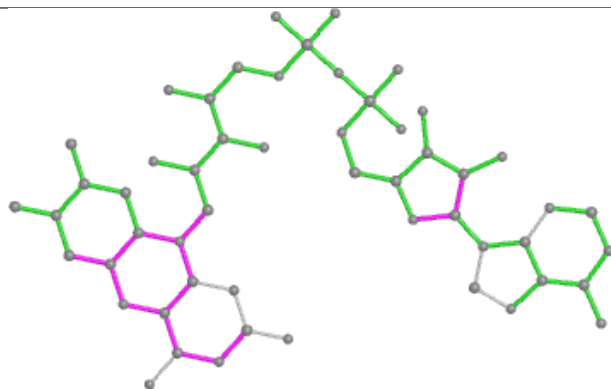
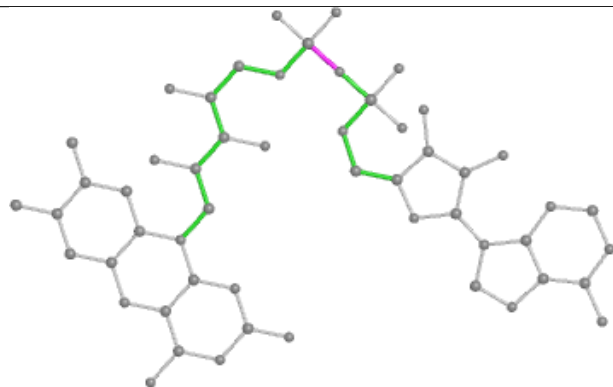
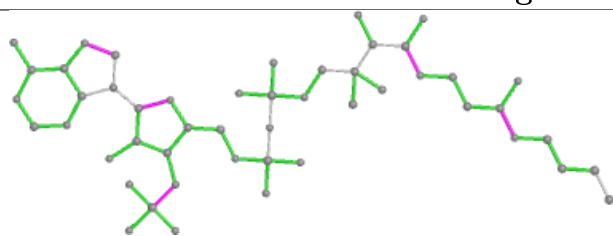
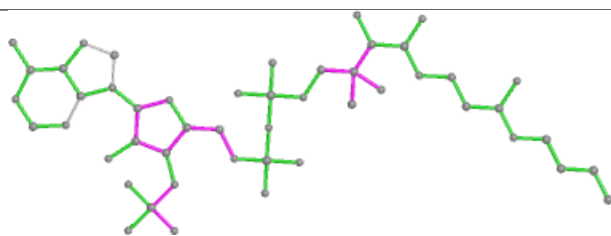
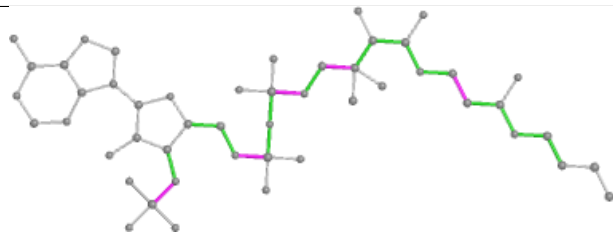
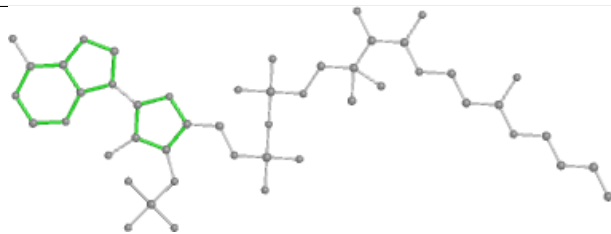
Bond angles

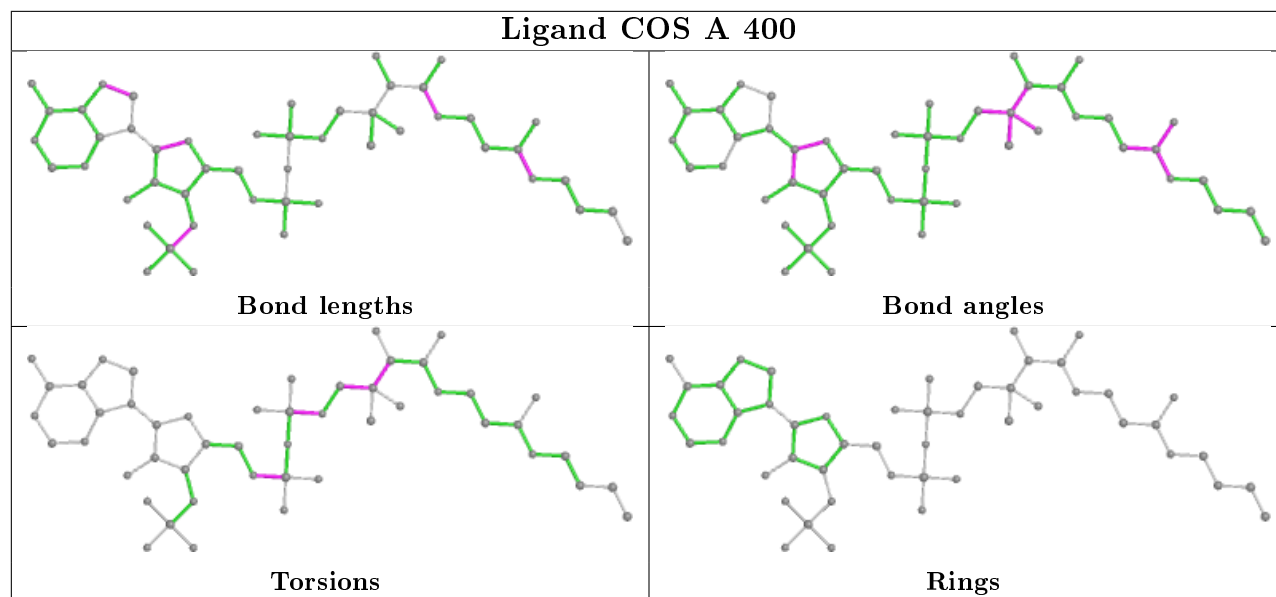


Torsions



Rings

Ligand FAD D 399**Bond lengths****Bond angles****Torsions****Rings****Ligand COS B 400****Bond lengths****Bond angles****Torsions****Rings**



5.7 Other polymers [i](#)

There are no such residues in this entry.

5.8 Polymer linkage issues [i](#)

There are no chain breaks in this entry.

6 Fit of model and data ⓘ

6.1 Protein, DNA and RNA chains ⓘ

EDS was not executed - this section is therefore empty.

6.2 Non-standard residues in protein, DNA, RNA chains ⓘ

EDS was not executed - this section is therefore empty.

6.3 Carbohydrates ⓘ

EDS was not executed - this section is therefore empty.

6.4 Ligands ⓘ

EDS was not executed - this section is therefore empty.

6.5 Other polymers ⓘ

EDS was not executed - this section is therefore empty.