



Full wwPDB EM Validation Report ⓘ

Apr 20, 2026 – 02:48 PM EDT

PDB ID : 10MC / pdb_000010mc
EMDB ID : EMD-75281
Title : Open2 Eco-ePEC: Cryo-EM structure of Eco RNAP his-elemental paused elongation complex with an open active site (open TL, SI3 and RH-FL)
Authors : Dhingra, Y.; Darst, S.A.
Deposited on : 2026-01-27
Resolution : 2.80 Å(reported)

This is a Full wwPDB EM Validation Report for a publicly released PDB entry.

We welcome your comments at validation@mail.wwpdb.org

A user guide is available at

<https://www.wwpdb.org/validation/2017/EMValidationReportHelp>
with specific help available everywhere you see the ⓘ symbol.

The types of validation reports are described at

<http://www.wwpdb.org/validation/2017/FAQs#types>.

The following versions of software and data (see [references ⓘ](#)) were used in the production of this report:

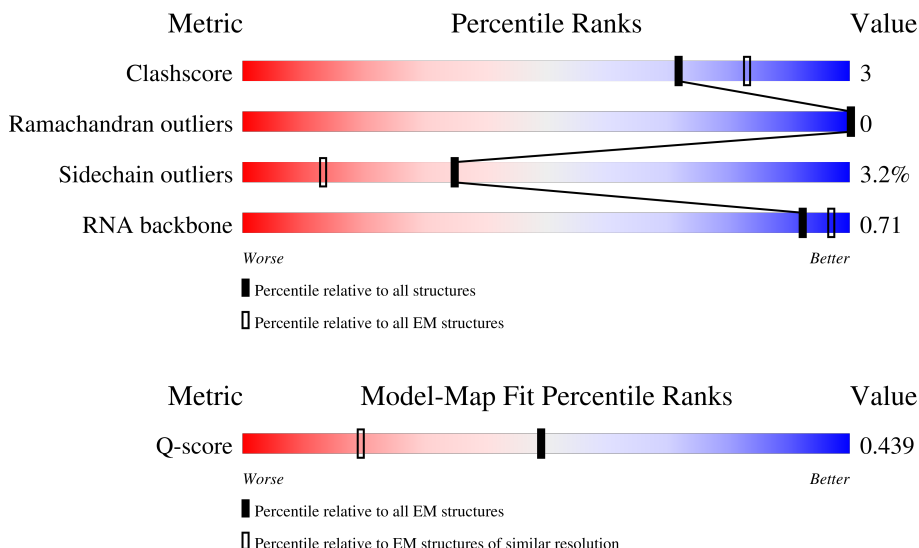
EMDB validation analysis : 0.0.1.dev132
Mogul : 2022.3.0, CSD as543be (2022)
MolProbity : 4-5-2 with Phenix2.0
Percentile statistics : 20250101.v01 (using entries in the PDB archive January 1st 2025)
EM percentile statistics : 202505.v01 (Using data in the EMDB archive up until May 2025)
MapQ : 1.9.13
Ideal geometry (proteins) : Engh & Huber (2001)
Ideal geometry (DNA, RNA) : Parkinson et al. (1996)
Validation Pipeline (wwPDB-VP) : 2.49

1 Overall quality at a glance

The following experimental techniques were used to determine the structure:
ELECTRON MICROSCOPY

The reported resolution of this entry is 2.80 Å.

Percentile scores (ranging between 0-100) for global validation metrics of the entry are shown in the following graphic. The table shows the number of entries on which the scores are based.



Metric	Whole archive (#Entries)	EM structures (#Entries)	Similar EM resolution (#Entries, resolution range(Å))
Clashscore	229148	23984	-
Ramachandran outliers	224038	23583	-
Sidechain outliers	223484	23102	-
RNA backbone	8273	3508	-
Q-score	-	25397	11806 (2.30 - 3.30)

The table below summarises the geometric issues observed across the polymeric chains and their fit to the map. The red, orange, yellow and green segments of the bar indicate the fraction of residues that contain outliers for ≥ 3 , 2, 1 and 0 types of geometric quality criteria respectively. A grey segment represents the fraction of residues that are not modelled. The numeric value for each fraction is indicated below the corresponding segment, with a dot representing fractions $\leq 5\%$. The upper red bar (where present) indicates the fraction of residues that have poor fit to the EM map (all-atom inclusion $< 40\%$). The numeric value is given above the bar.

Mol	Chain	Length	Quality of chain
1	B	32	<div> <div>9%</div> <div>62%</div> <div>31%</div> <div>6%</div> </div>
2	K	91	<div> <div>37%</div> <div>82%</div> <div>13%</div> </div>
3	R	19	<div> <div>11%</div> <div>32%</div> <div>11%</div> <div>47%</div> </div>

Continued on next page...

Continued from previous page...

Mol	Chain	Length	Quality of chain
4	A	32	<div><div><div></div><div></div><div></div></div><div>44%28%28%</div></div>
5	G	329	<div><div><div></div><div></div><div></div></div><div>63%34%</div></div>
5	H	329	<div><div><div></div><div></div><div></div></div><div>58%8%34%</div></div>
6	I	1342	<div><div><div></div><div></div><div></div></div><div>11%87%10%..</div></div>
7	J	1407	<div><div><div></div><div></div><div></div></div><div>10%84%11%5%</div></div>

2 Entry composition

There are 11 unique types of molecules in this entry. The entry contains 26767 atoms, of which 0 are hydrogens and 0 are deuteriums.

In the tables below, the AltConf column contains the number of residues with at least one atom in alternate conformation and the Trace column contains the number of residues modelled with at most 2 atoms.

- Molecule 1 is a DNA chain called template DNA.

Mol	Chain	Residues	Atoms					AltConf	Trace
1	B	30	Total	C	N	O	P	0	0
			608	290	109	179	30		

- Molecule 2 is a protein called DNA-directed RNA polymerase subunit omega.

Mol	Chain	Residues	Atoms					AltConf	Trace
2	K	79	Total	C	N	O	S	0	0
			627	382	118	126	1		

- Molecule 3 is a RNA chain called RNA.

Mol	Chain	Residues	Atoms					AltConf	Trace
3	R	10	Total	C	N	O	P	0	0
			214	95	36	73	10		

- Molecule 4 is a DNA chain called non-template DNA.

Mol	Chain	Residues	Atoms					AltConf	Trace
4	A	23	Total	C	N	O	P	0	0
			470	225	87	136	22		

- Molecule 5 is a protein called DNA-directed RNA polymerase subunit alpha.

Mol	Chain	Residues	Atoms					AltConf	Trace
5	G	218	Total	C	N	O	S	0	0
			1679	1051	297	325	6		
5	H	218	Total	C	N	O	S	0	0
			1681	1050	297	328	6		

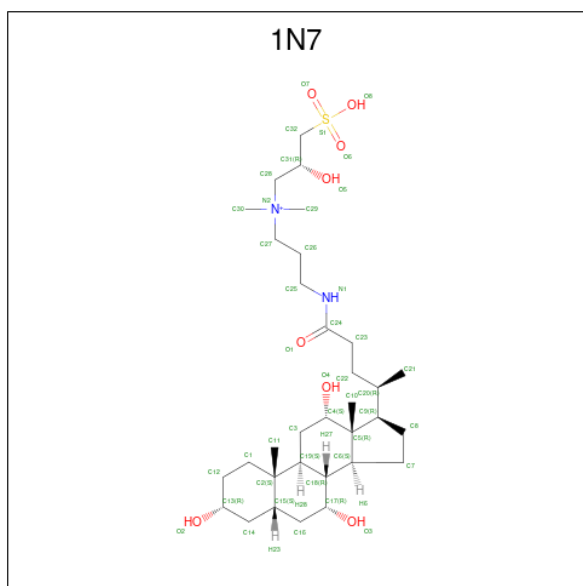
- Molecule 6 is a protein called DNA-directed RNA polymerase subunit beta.

Mol	Chain	Residues	Atoms					AltConf	Trace
6	I	1316	Total	C	N	O	S	0	0
			10381	6514	1810	2014	43		

- Molecule 7 is a protein called DNA-directed RNA polymerase subunit beta'.

Mol	Chain	Residues	Atoms					AltConf	Trace
7	J	1337	Total	C	N	O	S	0	0
			10403	6536	1856	1961	50		

- Molecule 8 is CHAPSO (CCD ID: 1N7) (formula: C₃₂H₅₉N₂O₈S).



Mol	Chain	Residues	Atoms			AltConf
8	I	1	Total	C	O	0
			27	24	3	

- Molecule 9 is MAGNESIUM ION (CCD ID: MG) (formula: Mg).

Mol	Chain	Residues	Atoms		AltConf
9	J	1	Total	Mg	0
			1	1	

- Molecule 10 is ZINC ION (CCD ID: ZN) (formula: Zn).

Mol	Chain	Residues	Atoms		AltConf
10	J	2	Total	Zn	0
			2	2	

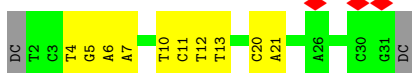
- Molecule 11 is water.

Mol	Chain	Residues	Atoms		AltConf
11	B	19	Total 19	O 19	0
11	K	5	Total 5	O 5	0
11	R	20	Total 20	O 20	0
11	A	6	Total 6	O 6	0
11	G	40	Total 40	O 40	0
11	H	42	Total 42	O 42	0
11	I	303	Total 303	O 303	0
11	J	239	Total 239	O 239	0

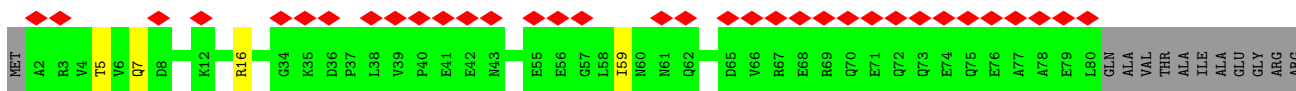
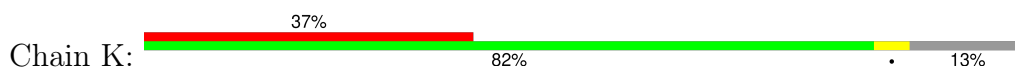
3 Residue-property plots

These plots are drawn for all protein, RNA, DNA and oligosaccharide chains in the entry. The first graphic for a chain summarises the proportions of the various outlier classes displayed in the second graphic. The second graphic shows the sequence view annotated by issues in geometry and atom inclusion in map density. Residues are color-coded according to the number of geometric quality criteria for which they contain at least one outlier: green = 0, yellow = 1, orange = 2 and red = 3 or more. A red diamond above a residue indicates a poor fit to the EM map for this residue (all-atom inclusion < 40%). Stretches of 2 or more consecutive residues without any outlier are shown as a green connector. Residues present in the sample, but not in the model, are shown in grey.

- Molecule 1: template DNA



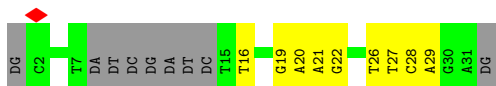
- Molecule 2: DNA-directed RNA polymerase subunit omega



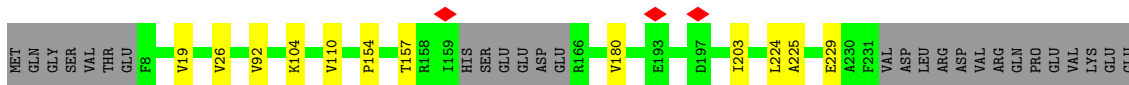
- Molecule 3: RNA



- Molecule 4: non-template DNA



- Molecule 5: DNA-directed RNA polymerase subunit alpha




LYS	PRO	GLU	PHE	ASP	PRO	ILE	LEU	ARG	VAL	ASP	ASP	LEU	GLU	THR	VAL	ARG	ASN	CYS	LEU	LYS	ALA	ALA	ILE	HIS	TYR	ILE	GLY	ASP	LEU	VAL	GLN	ARG	THR	GLU	VAL	GLU	LEU	LEU	LYS	THR	PRO	ASN	LEU	GLY	LYS	LYS	SER	SER	THR	GLU	ILE	LYS	ASP				
VAL	LEU	ALA	SER	ARG	GLY	LEU	SER	GLY	MET	ARG	LEU	GLU	GLU	ASN	TRP	PRO	PRO	ALA	SER	ILE	ALA	ASP	ASP	GLU																																	

• Molecule 5: DNA-directed RNA polymerase subunit alpha

Chain H:  58% 8% 34%

ILE	ALA	ASP	GLU																																																																																																																																																																																																																																																																																																																																																																																																																																																																																																																																																																																																																																																																																																																																																																																																																																																																																																																																																																																																																																																																																																																																																																																																																																																																																																																																																																																																																		</
-----	-----	-----	-----	--	--	--	--	--	--	--	--	--	--	--	--	--	--	--	--	--	--	--	--	--	--	--	--	--	--	--	--	--	--	--	--	--	--	--	--	--	--	--	--	--	--	--	--	--	--	--	--	--	--	--	--	--	--	--	--	--	--	--	--	--	--	--	--	--	--	--	--	--	--	--	--	--	--	--	--	--	--	--	--	--	--	--	--	--	--	--	--	--	--	--	--	--	--	--	--	--	--	--	--	--	--	--	--	--	--	--	--	--	--	--	--	--	--	--	--	--	--	--	--	--	--	--	--	--	--	--	--	--	--	--	--	--	--	--	--	--	--	--	--	--	--	--	--	--	--	--	--	--	--	--	--	--	--	--	--	--	--	--	--	--	--	--	--	--	--	--	--	--	--	--	--	--	--	--	--	--	--	--	--	--	--	--	--	--	--	--	--	--	--	--	--	--	--	--	--	--	--	--	--	--	--	--	--	--	--	--	--	--	--	--	--	--	--	--	--	--	--	--	--	--	--	--	--	--	--	--	--	--	--	--	--	--	--	--	--	--	--	--	--	--	--	--	--	--	--	--	--	--	--	--	--	--	--	--	--	--	--	--	--	--	--	--	--	--	--	--	--	--	--	--	--	--	--	--	--	--	--	--	--	--	--	--	--	--	--	--	--	--	--	--	--	--	--	--	--	--	--	--	--	--	--	--	--	--	--	--	--	--	--	--	--	--	--	--	--	--	--	--	--	--	--	--	--	--	--	--	--	--	--	--	--	--	--	--	--	--	--	--	--	--	--	--	--	--	--	--	--	--	--	--	--	--	--	--	--	--	--	--	--	--	--	--	--	--	--	--	--	--	--	--	--	--	--	--	--	--	--	--	--	--	--	--	--	--	--	--	--	--	--	--	--	--	--	--	--	--	--	--	--	--	--	--	--	--	--	--	--	--	--	--	--	--	--	--	--	--	--	--	--	--	--	--	--	--	--	--	--	--	--	--	--	--	--	--	--	--	--	--	--	--	--	--	--	--	--	--	--	--	--	--	--	--	--	--	--	--	--	--	--	--	--	--	--	--	--	--	--	--	--	--	--	--	--	--	--	--	--	--	--	--	--	--	--	--	--	--	--	--	--	--	--	--	--	--	--	--	--	--	--	--	--	--	--	--	--	--	--	--	--	--	--	--	--	--	--	--	--	--	--	--	--	--	--	--	--	--	--	--	--	--	--	--	--	--	--	--	--	--	--	--	--	--	--	--	--	--	--	--	--	--	--	--	--	--	--	--	--	--	--	--	--	--	--	--	--	--	--	--	--	--	--	--	--	--	--	--	--	--	--	--	--	--	--	--	--	--	--	--	--	--	--	--	--	--	--	--	--	--	--	--	--	--	--	--	--	--	--	--	--	--	--	--	--	--	--	--	--	--	--	--	--	--	--	--	--	--	--	--	--	--	--	--	--	--	--	--	--	--	--	--	--	--	--	--	--	--	--	--	--	--	--	--	--	--	--	--	--	--	--	--	--	--	--	--	--	--	--	--	--	--	--	--	--	--	--	--	--	--	--	--	--	--	--	--	--	--	--	--	--	--	--	--	--	--	--	--	--	--	--	--	--	--	--	--	--	--	--	--	--	--	--	--	--	--	--	--	--	--	--	--	--	--	--	--	--	--	--	--	--	--	--	--	--	--	--	--	--	--	--	--	--	--	--	--	--	--	--	--	--	--	--	--	--	--	--	--	--	--	--	--	--	--	--	--	--	--	--	--	--	--	--	--	--	--	--	--	--	--	--	--	--	--	--	--	--	--	--	--	--	--	--	--	--	--	--	--	--	--	--	--	--	--	--	--	--	--	--	--	--	--	--	--	--	--	--	--	--	--	--	--	--	--	--	--	--	--	--	--	--	--	--	--	--	--	--	--	--	--	--	--	--	--	--	--	--	--	--	--	--	--	--	--	--	--	--	--	--	--	--	--	--	--	--	--	--	--	--	--	--	--	--	--	--	--	--	--	--	--	--	--	--	--	--	--	--	--	--	--	--	--	--	--	--	--	--	--	--	--	--	--	--	--	--	--	--	--	--	--	--	--	--	--	--	--	--	--	--	--	--	--	--	--	--	--	--	--	--	--	--	--	--	--	--	--	--	--	--	--	--	--	--	--	--	--	--	--	--	--	--	--	--	--	--	--	--	--	--	--	--	--	--	--	--	--	--	--	--	--	--	--	--	--	--	--	--	--	--	--	--	--	--	--	--	--	--	--	--	--	--	--	--	--	--	--	--	--	--	--	--	--	--	--	--	--	--	--	--	--	--	--	--	--	--	--	--	--	--	--	--	--	--	--	--	--	--	--	--	--	--	--	--	--	--	--	--	--	--	--	--	--	--	--	--	--	--	--	--	--	--	--	--	--	--	--	--	--	--	--	--	--	--	--	--	--	--	--	--	--	--	--	--	--	--	--	--	--	--	--	--	--	--	--	--	--	--	--	--	--	--	--	--	--	--	--	--	--	--	--	--	--	--	--	--	--	--	--	--	--	--	--	--	--	--	--	--	--	--	--	--	--	--	--	--	--	--	--	--	--	--	--	--	--	--	--	--	--	--	--	--	--	--	--	--	--	--	--	--	--	--	--	--	--	--	--	--	--	--	--	--	--	--	--	--	--	--	--	--	--	--	--	--	--	--	--	--	--	--	--	--	--	--	--	--	--	--	--	--	--	--	--	--	--	--	--	--	--	--	--	--	--	--	--	--	--	--	--	--	--	--	--	--	--	--	--	--	--	--	--	--	--	--	--	--	--	--	--	--	--	--	--	--	--	--	--	--	--	--	--	--	--	--	--	--	--	--	--	--	--	--	--	--	--	--	--	--	--	--	--	--	--	--	--	--	--	--	--	--	--	--	--	--	--	--	--	--	--	--	--	--	--	--	--	--	--	--	--	--	--	--	--	--	--	--	--	--	--	--	--	--	--	--	--	--	--	--	--	--	--	--	--	--	--	--	--	--	--	--	--	--	--	--	--	--	--	--	--	--	--	--	--	--	--	--	--	--	--	--	--	--	--	--	--	--	--	--	--	--	--	--	--	--	--	--	--	--	--	--	--	--	--	----

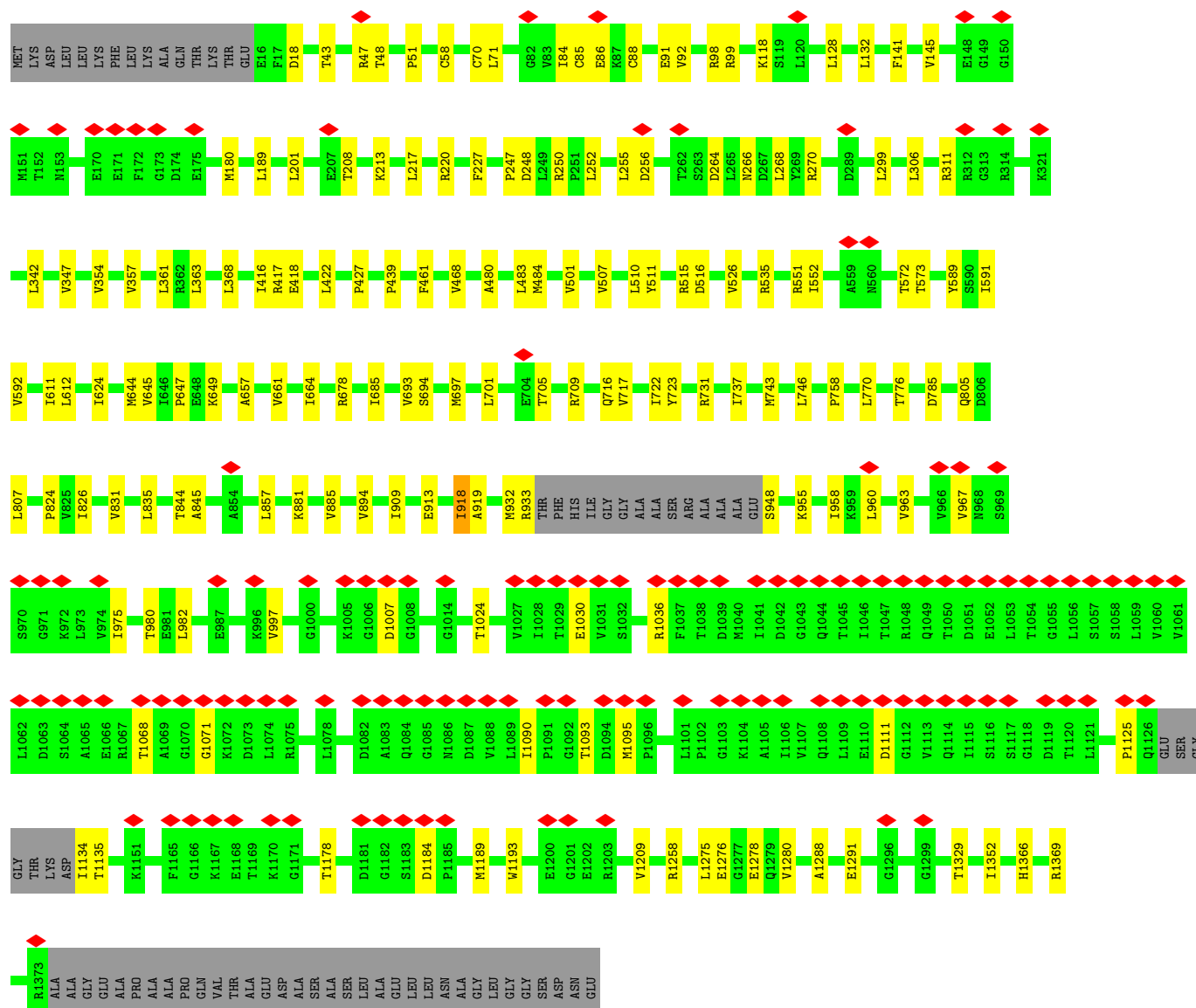
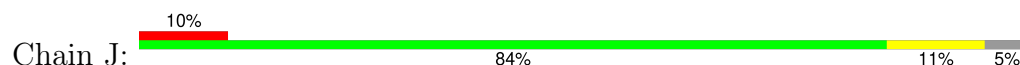
• Molecule 6: DNA-directed RNA polymerase subunit beta

Chain I:  11% 87% 10% ..

Q1010	L1011	E1012	Q1013	L1014	A1015	E1016	Q1017	Y1018	D1019	E1020	R1034	P1044	G1045	V1046	L1047	K1048	V1056	I1060	D1064	K1073	S1105	I1109	I1112	T1115	M1119	V1159	R1171	V1186	Q1220	F1221	G1228	M1232	D1240	V1254	F1265	V1293	L1327																			
N766	G797	N811	F812	E813	V823	Q834	V839	S840	R841	D842	T843	K844	P847	E848	F849	T850	D853	E859	T878	G879	K886	V887	T888	P889	K890	GLY	GLU	THR	GLN	LEU	THR	PRO	GLU	GLY	LYS	LEU	LEU	ARG	ALA	ILE	PHE	GLY	GLY	LYS	ALA	SER	ASP	VAL								
F514	P520	I524	L533	L538	V550	P560	L571	V577	T581	V598	V599	T600	V615	T635	V655	V661	D675	V708	V714	T715	R720	V724	Q725	V726	V727	V733	I734	K735	V736	N737	E738	N741	E745	A746	Y756																					
V289	E290	D300	Y301	I302	D303	E304	S305	T306	G307	E308	L309	T310	C311	A312	E316	L317	S318	L319	D320	K324	Q327	S328	G329	H330	K331	R332	T333	E334	D340	G373	L397	K422	L448	L468	K476	L479	D483	L484	T486	M488	F489	Q490	D491	M492												
L213	M214	Y215	K227	V228	F230	E231	L232	R233	D234	N235	K236	L237	Q238	M239	E240	L241	L246	R247	G248	E249	T250	A251	S252	F253	D254	I255	E256	A257	N258	Q259	K260	V261	Y262	V263	E264	K265	G266	R267	R268	L269	T270	A271	R272	H273	Q276	L277	E278	K279	D280	F289	Q290	D291	V282	K283	L284	I285
MET	V2	K9	R10	I11	T30	G45	E50	V56	F57	I59	N65	S66	L75	T91	L100	I104	Y105	E106	R107	E108	A109	P110	E111	G112	T113	V114	K115	D116	I117	I127	I138	V155	P178	K191	R197	R200	L204	I208																		



• Molecule 7: DNA-directed RNA polymerase subunit beta'



4 Experimental information

Property	Value	Source
EM reconstruction method	SINGLE PARTICLE	Depositor
Imposed symmetry	POINT, Not provided	
Number of particles used	Not provided	
Resolution determination method	Not provided	
CTF correction method	PHASE FLIPPING AND AMPLITUDE CORRECTION	Depositor
Microscope	TFS KRIOS	Depositor
Voltage (kV)	300	Depositor
Electron dose ($e^-/\text{\AA}^2$)	50	Depositor
Minimum defocus (nm)	500	Depositor
Maximum defocus (nm)	2500	Depositor
Magnification	Not provided	
Image detector	GATAN K3 (6k x 4k)	Depositor
Maximum map value	0.278	Depositor
Minimum map value	-0.244	Depositor
Average map value	0.001	Depositor
Map value standard deviation	0.007	Depositor
Recommended contour level	0.02	Depositor
Map size (Å)	259.58398, 259.58398, 259.58398	wwPDB
Map dimensions	384, 384, 384	wwPDB
Map angles (°)	90.0, 90.0, 90.0	wwPDB
Pixel spacing (Å)	0.67599994, 0.67599994, 0.67599994	Depositor

5 Model quality

5.1 Standard geometry

Bond lengths and bond angles in the following residue types are not validated in this section: 1N7, ZN, MG

The Z score for a bond length (or angle) is the number of standard deviations the observed value is removed from the expected value. A bond length (or angle) with $|Z| > 5$ is considered an outlier worth inspection. RMSZ is the root-mean-square of all Z scores of the bond lengths (or angles).

Mol	Chain	Bond lengths		Bond angles	
		RMSZ	# Z >5	RMSZ	# Z >5
1	B	0.29	0/680	0.45	0/1045
2	K	0.09	0/629	0.19	0/847
3	R	0.12	0/238	0.30	0/369
4	A	0.14	0/526	0.30	0/808
5	G	0.13	0/1699	0.29	0/2302
5	H	0.12	0/1700	0.28	0/2304
6	I	0.16	0/10547	0.29	0/14232
7	J	0.14	0/10560	0.28	0/14257
All	All	0.15	0/26579	0.29	0/36164

Chiral center outliers are detected by calculating the chiral volume of a chiral center and verifying if the center is modelled as a planar moiety or with the opposite hand. A planarity outlier is detected by checking planarity of atoms in a peptide group, atoms in a mainchain group or atoms of a sidechain that are expected to be planar.

Mol	Chain	#Chirality outliers	#Planarity outliers
7	J	0	1

There are no bond length outliers.

There are no bond angle outliers.

There are no chirality outliers.

All (1) planarity outliers are listed below:

Mol	Chain	Res	Type	Group
7	J	933	ARG	Sidechain

5.2 Too-close contacts ⓘ

In the following table, the Non-H and H(model) columns list the number of non-hydrogen atoms and hydrogen atoms in the chain respectively. The H(added) column lists the number of hydrogen atoms added and optimized by MolProbity. The Clashes column lists the number of clashes within the asymmetric unit, whereas Symm-Clashes lists symmetry-related clashes.

Mol	Chain	Non-H	H(model)	H(added)	Clashes	Symm-Clashes
1	B	608	0	338	10	0
2	K	627	0	634	2	0
3	R	214	0	106	6	0
4	A	470	0	262	8	0
5	G	1679	0	1717	5	0
5	H	1681	0	1714	16	0
6	I	10381	0	10392	66	0
7	J	10403	0	10628	78	0
8	I	27	0	39	0	0
9	J	1	0	0	0	0
10	J	2	0	0	0	0
11	A	6	0	0	0	0
11	B	19	0	0	0	0
11	G	40	0	0	0	0
11	H	42	0	0	0	0
11	I	303	0	0	1	0
11	J	239	0	0	1	0
11	K	5	0	0	0	0
11	R	20	0	0	1	0
All	All	26767	0	25830	176	0

The all-atom clashscore is defined as the number of clashes found per 1000 atoms (including hydrogen atoms). The all-atom clashscore for this structure is 3.

All (176) close contacts within the same asymmetric unit are listed below, sorted by their clash magnitude.

Atom-1	Atom-2	Interatomic distance (Å)	Clash overlap (Å)
1:B:13:DT:H3	4:A:19:DG:H1	1.05	0.97
6:I:560:PRO:HB2	7:J:776:THR:HG21	1.56	0.88
7:J:85:CYS:HB3	7:J:88:CYS:SG	2.26	0.75
6:I:738:GLU:HA	6:I:741:MET:HE2	1.74	0.69
3:R:10:G:H2'	3:R:11:A:C8	2.28	0.68
5:H:104:LYS:HD3	5:H:110:VAL:HG22	1.76	0.66
4:A:26:DT:H2'	4:A:27:DT:H71	1.80	0.64
7:J:1093:THR:HG22	7:J:1095:MET:H	1.65	0.62

Continued on next page...

Continued from previous page...

Atom-1	Atom-2	Interatomic distance (Å)	Clash overlap (Å)
7:J:826:ILE:HG22	7:J:831:VAL:HG12	1.81	0.61
5:H:101:THR:HG22	5:H:143:ARG:HG2	1.83	0.59
1:B:6:DA:H5''	7:J:1189:MET:HE1	1.85	0.59
1:B:11:DC:H2''	1:B:12:DT:H71	1.85	0.58
6:I:197:ARG:HD3	6:I:200:ARG:HA	1.86	0.58
6:I:1115:THR:HG23	6:I:1228:GLY:HA3	1.84	0.58
7:J:85:CYS:CB	7:J:88:CYS:SG	2.87	0.58
6:I:978:VAL:HG13	6:I:1007:LYS:HG3	1.85	0.58
7:J:885:VAL:HG13	7:J:894:VAL:HG21	1.86	0.57
7:J:909:ILE:HD11	7:J:913:GLU:HG2	1.85	0.57
6:I:255:ILE:HB	6:I:263:VAL:HG21	1.87	0.57
7:J:201:LEU:HD11	7:J:220:ARG:HH11	1.70	0.57
6:I:306:THR:HG23	6:I:308:GLU:H	1.71	0.56
6:I:968:GLU:HG2	6:I:1018:TYR:HE1	1.71	0.56
6:I:888:THR:HG23	6:I:890:LYS:HZ2	1.71	0.55
6:I:230:PHE:HB2	6:I:333:ILE:HB	1.89	0.55
7:J:591:ILE:HG23	7:J:592:VAL:HG13	1.89	0.55
7:J:1068:THR:HG23	7:J:1071:GLY:H	1.72	0.55
1:B:20:DC:H2'	1:B:21:DA:H8	1.72	0.55
5:H:140:ILE:HD11	5:H:142:MET:HE3	1.88	0.54
6:I:9:LYS:HG2	6:I:1171:ARG:HE	1.72	0.54
7:J:1178:THR:HG22	7:J:1184:ASP:HB3	1.90	0.54
7:J:70:CYS:HB2	7:J:88:CYS:SG	2.48	0.54
6:I:720:ARG:HE	6:I:736:VAL:HG11	1.73	0.53
6:I:720:ARG:HH21	6:I:736:VAL:HG21	1.73	0.53
7:J:99:ARG:HB3	7:J:248:ASP:HB2	1.90	0.53
7:J:824:PRO:HD3	7:J:835:LEU:HB2	1.90	0.52
5:H:100:LEU:HD21	5:H:121:VAL:HG11	1.91	0.52
7:J:47:ARG:HG3	7:J:48:THR:HG23	1.91	0.52
6:I:533:LEU:HD21	6:I:571:LEU:HD13	1.91	0.52
6:I:756:TYR:H	6:I:766:ASN:HB2	1.75	0.52
1:B:13:DT:O2	4:A:19:DG:N2	2.42	0.52
6:I:797:GLY:HA3	6:I:1232:MET:O	2.10	0.52
4:A:21:DA:H2''	4:A:22:DG:H5'	1.91	0.52
6:I:524:ILE:HD12	6:I:708:VAL:HG13	1.91	0.52
6:I:241:LEU:HD13	6:I:285:ILE:HG13	1.91	0.51
7:J:71:LEU:HB3	7:J:88:CYS:HB2	1.93	0.51
1:B:4:DT:H2''	1:B:5:DG:C8	2.46	0.51
7:J:918:ILE:HG13	7:J:919:ALA:N	2.26	0.51
1:B:13:DT:O4	4:A:19:DG:O6	2.27	0.50
5:H:79:LEU:HD11	7:J:526:VAL:HG21	1.93	0.50

Continued on next page...

Continued from previous page...

Atom-1	Atom-2	Interatomic distance (Å)	Clash overlap (Å)
5:G:104:LYS:HG2	5:G:110:VAL:HG22	1.93	0.50
6:I:309:LEU:H	6:I:309:LEU:HD23	1.75	0.50
6:I:204:LEU:HB2	6:I:208:ILE:HD12	1.92	0.50
7:J:208:THR:HG21	7:J:213:LYS:HD3	1.93	0.49
6:I:213:LEU:HD13	6:I:422:LYS:HG2	1.94	0.49
7:J:128:LEU:HD21	7:J:189:LEU:HD23	1.93	0.49
7:J:141:PHE:HA	7:J:180:MET:HE2	1.94	0.49
7:J:958:ILE:HD12	7:J:982:LEU:HD11	1.95	0.49
4:A:16:DT:H2''	6:I:200:ARG:HG3	1.95	0.49
7:J:268:LEU:HD13	7:J:306:LEU:HA	1.95	0.49
6:I:726:TYR:HB3	6:I:733:VAL:HB	1.95	0.49
6:I:104:ILE:HG21	6:I:484:LEU:HB3	1.95	0.48
6:I:935:THR:HG22	6:I:1048:LYS:HE2	1.95	0.48
6:I:936:ARG:HH22	6:I:1044:PRO:HA	1.79	0.48
7:J:845:ALA:HB3	7:J:881:LYS:HG2	1.96	0.48
6:I:59:ILE:HD11	6:I:476:LYS:HD2	1.96	0.47
6:I:310:ILE:HG23	6:I:324:LYS:HE2	1.95	0.47
7:J:342:LEU:HD23	7:J:1352:ILE:HG23	1.96	0.47
2:K:16:ARG:HD3	7:J:483:LEU:HD23	1.97	0.47
6:I:724:VAL:HA	6:I:734:ILE:HD13	1.98	0.46
5:G:154:PRO:HG2	5:G:157:THR:HB	1.97	0.46
2:K:5:THR:HG22	2:K:7:GLN:H	1.79	0.46
6:I:66:SER:HB2	6:I:479:LEU:HD11	1.97	0.46
4:A:28:DC:H2''	4:A:29:DA:C8	2.51	0.46
6:I:823:VAL:HG23	6:I:1060:ILE:HG22	1.97	0.46
7:J:705:THR:HG21	7:J:716:GLN:HE21	1.81	0.46
7:J:958:ILE:HG23	7:J:982:LEU:HD11	1.97	0.46
7:J:960:LEU:HD23	7:J:1007:ASP:HB3	1.98	0.46
7:J:1024:THR:HG22	7:J:1125:PRO:HA	1.98	0.46
7:J:611:ILE:HG22	7:J:612:LEU:HD12	1.97	0.46
6:I:840:SER:HB2	6:I:850:ILE:HD11	1.97	0.46
6:I:839:VAL:HG11	6:I:841:ARG:HH21	1.80	0.46
6:I:1109:ILE:HD12	7:J:644:MET:HE3	1.98	0.46
6:I:1105:SER:HB2	7:J:731:ARG:HD2	1.97	0.45
7:J:885:VAL:HG12	7:J:1258:ARG:HD2	1.98	0.45
5:H:27:THR:HG22	5:H:202:VAL:HG22	1.97	0.45
6:I:91:THR:HG23	6:I:138:ILE:HA	1.97	0.45
7:J:511:TYR:O	7:J:515:ARG:HG3	2.17	0.45
3:R:11:A:H2'	3:R:12:U:C6	2.51	0.45
6:I:105:TYR:HA	6:I:114:VAL:HA	1.99	0.45
6:I:926:GLY:HA2	6:I:1056:VAL:HG13	1.98	0.45

Continued on next page...

Continued from previous page...

Atom-1	Atom-2	Interatomic distance (Å)	Clash overlap (Å)
6:I:57:PHE:CZ	6:I:100:LEU:HD22	2.51	0.45
6:I:488:MET:HE3	6:I:490:GLN:HB3	1.99	0.45
7:J:647:PRO:HG3	7:J:697:MET:HB3	1.99	0.45
7:J:416:ILE:HG12	7:J:439:PRO:HG2	1.98	0.45
7:J:1090:ILE:HB	7:J:1093:THR:HB	1.98	0.45
3:R:12:U:H2'	3:R:13:G:C8	2.52	0.44
6:I:848:GLU:HG2	6:I:888:THR:HA	1.99	0.44
3:R:13:G:H2'	3:R:14:U:C6	2.51	0.44
7:J:51:PRO:HB2	7:J:58:CYS:HA	1.98	0.44
6:I:302:ILE:HA	6:I:309:LEU:HA	1.99	0.44
7:J:201:LEU:HD22	7:J:217:LEU:HD22	1.99	0.44
7:J:510:LEU:HD11	7:J:624:ILE:HG23	2.00	0.44
1:B:20:DC:H2'	1:B:21:DA:C8	2.51	0.44
7:J:18:ASP:HB3	7:J:1369:ARG:HH22	1.81	0.44
5:H:48:LEU:HD11	7:J:535:ARG:HG3	1.99	0.44
5:H:46:ILE:HD12	5:H:224:LEU:HB2	2.00	0.44
7:J:118:LYS:HB3	7:J:311:ARG:HD3	2.00	0.44
7:J:693:VAL:HG21	7:J:743:MET:HE3	1.99	0.43
5:H:80:GLU:HG3	7:J:551:ARG:HH21	1.84	0.43
6:I:741:MET:SD	6:I:746:ALA:HB1	2.58	0.43
7:J:694:SER:O	7:J:697:MET:HG3	2.18	0.43
7:J:264:ASP:O	7:J:268:LEU:HG	2.19	0.43
5:H:51:MET:HE1	5:H:219:ARG:HB3	2.00	0.43
6:I:56:VAL:HB	6:I:468:LEU:HD23	1.99	0.43
7:J:955:LYS:HE3	7:J:955:LYS:HB3	1.86	0.43
3:R:19:U:OP1	6:I:1073:LYS:HE3	2.18	0.43
6:I:878:THR:HG22	6:I:879:GLY:H	1.84	0.43
6:I:1005:GLU:HG3	6:I:1007:LYS:H	1.84	0.43
7:J:43:THR:HG21	7:J:270:ARG:HH11	1.83	0.43
7:J:746:LEU:HD23	7:J:758:PRO:HB3	2.01	0.43
5:H:95:LYS:HE2	5:H:98:VAL:HG22	2.00	0.43
5:H:124:VAL:HG21	5:H:209:GLY:HA3	2.01	0.43
7:J:661:VAL:HG12	7:J:685:ILE:HD11	2.01	0.43
7:J:664:ILE:HG22	7:J:678:ARG:HG3	2.00	0.43
6:I:75:LEU:HD21	6:I:127:ILE:HD11	2.00	0.43
6:I:943:LYS:HA	6:I:946:LEU:HG	2.00	0.43
7:J:980:THR:HB	7:J:997:VAL:HB	2.01	0.43
7:J:1288:ALA:O	7:J:1291:GLU:HG3	2.18	0.43
6:I:479:LEU:HD13	6:I:492:MET:HE1	1.99	0.42
5:G:224:LEU:HD23	5:H:228:LEU:HD11	2.00	0.42
5:H:15:ASP:HB2	5:H:27:THR:HG1	1.83	0.42

Continued on next page...

Continued from previous page...

Atom-1	Atom-2	Interatomic distance (Å)	Clash overlap (Å)
6:I:992:LEU:HB3	6:I:997:TRP:HE1	1.84	0.42
7:J:417:ARG:HG2	7:J:418:GLU:HG3	2.01	0.42
7:J:368:LEU:HD12	7:J:439:PRO:HB3	2.01	0.42
6:I:834:GLN:HE22	6:I:924:VAL:HG21	1.83	0.42
7:J:1036:ARG:HD2	7:J:1111:ASP:OD1	2.20	0.42
3:R:17:G:H2'	3:R:18:C:C6	2.55	0.42
7:J:84:ILE:HG12	7:J:91:GLU:HB3	2.01	0.42
5:H:15:ASP:HB2	5:H:27:THR:OG1	2.20	0.42
6:I:283:LYS:HG3	6:I:284:LEU:HD12	2.01	0.42
6:I:577:VAL:HG23	6:I:661:VAL:O	2.19	0.42
7:J:1275:LEU:HG	7:J:1276:GLU:H	1.83	0.42
5:G:225:ALA:O	5:G:229:GLU:HG2	2.20	0.42
7:J:572:THR:HG21	7:J:589:TYR:OH	2.19	0.42
4:A:19:DG:H2''	4:A:20:DA:C8	2.55	0.42
5:G:26:VAL:HG22	5:G:203:ILE:HB	2.02	0.42
7:J:511:TYR:CZ	7:J:515:ARG:HD2	2.55	0.42
6:I:1220:GLN:HG2	6:I:1221:PHE:O	2.20	0.41
7:J:480:ALA:HA	7:J:484:MET:HE3	2.02	0.41
7:J:701:LEU:HD22	7:J:723:TYR:HB2	2.01	0.41
6:I:45:GLY:HA2	6:I:50:GLU:HB3	2.01	0.41
6:I:178:PRO:HA	6:I:397:LEU:HD23	2.01	0.41
7:J:697:MET:HE2	7:J:697:MET:HB2	1.87	0.41
5:H:208:ASN:OD1	5:H:210:THR:HG22	2.20	0.41
6:I:737:ASN:O	6:I:741:MET:HG3	2.20	0.41
6:I:257:ALA:HB1	6:I:282:VAL:HG21	2.03	0.41
6:I:66:SER:HB3	6:I:104:ILE:HG22	2.01	0.41
6:I:813:GLU:HB2	7:J:461:PHE:HD2	1.85	0.41
6:I:215:TYR:HE2	6:I:422:LYS:HD2	1.86	0.41
1:B:10:DT:H2''	1:B:11:DC:C2	2.56	0.41
6:I:448:LEU:HD23	6:I:448:LEU:HA	1.84	0.41
6:I:1119:MET:HG3	11:I:1591:HOH:O	2.20	0.41
7:J:98:ARG:O	7:J:247:PRO:HD2	2.21	0.41
7:J:250:ARG:HH11	7:J:266:ASN:HD21	1.69	0.41
7:J:255:LEU:HD12	7:J:256:ASP:HB2	2.03	0.41
1:B:6:DA:H2''	1:B:7:DA:H8	1.86	0.41
7:J:657:ALA:O	7:J:661:VAL:HG13	2.21	0.41
11:R:102:HOH:O	7:J:427:PRO:HD3	2.20	0.40
7:J:785:ASP:OD1	7:J:932:MET:HB3	2.21	0.40
7:J:1193:TRP:CD1	7:J:1193:TRP:H	2.39	0.40
6:I:1112:ILE:O	6:I:1115:THR:HB	2.22	0.40
7:J:737:ILE:HD11	11:J:1802:HOH:O	2.21	0.40

Continued on next page...

Continued from previous page...

Atom-1	Atom-2	Interatomic distance (Å)	Clash overlap (Å)
7:J:1275:LEU:HB3	7:J:1278:GLU:HB2	2.03	0.40
7:J:516:ASP:HB3	7:J:573:THR:HG21	2.03	0.40
7:J:963:VAL:HG23	7:J:975:ILE:HD13	2.03	0.40
6:I:520:PRO:HG3	6:I:714:VAL:HG21	2.03	0.40

There are no symmetry-related clashes.

5.3 Torsion angles [i](#)

5.3.1 Protein backbone [i](#)

In the following table, the Percentiles column shows the percent Ramachandran outliers of the chain as a percentile score with respect to all PDB entries followed by that with respect to all EM entries.

The Analysed column shows the number of residues for which the backbone conformation was analysed, and the total number of residues.

Mol	Chain	Analysed	Favoured	Allowed	Outliers	Percentiles	
2	K	77/91 (85%)	75 (97%)	2 (3%)	0	100	100
5	G	214/329 (65%)	209 (98%)	5 (2%)	0	100	100
5	H	214/329 (65%)	210 (98%)	4 (2%)	0	100	100
6	I	1312/1342 (98%)	1281 (98%)	31 (2%)	0	100	100
7	J	1331/1407 (95%)	1300 (98%)	31 (2%)	0	100	100
All	All	3148/3498 (90%)	3075 (98%)	73 (2%)	0	100	100

There are no Ramachandran outliers to report.

5.3.2 Protein sidechains [i](#)

In the following table, the Percentiles column shows the percent sidechain outliers of the chain as a percentile score with respect to all PDB entries followed by that with respect to all EM entries.

The Analysed column shows the number of residues for which the sidechain conformation was analysed, and the total number of residues.

Mol	Chain	Analysed	Rotameric	Outliers	Percentiles	
2	K	67/75 (89%)	66 (98%)	1 (2%)	57	84

Continued on next page...

Continued from previous page...

Mol	Chain	Analysed	Rotameric	Outliers	Percentiles	
5	G	185/286 (65%)	182 (98%)	3 (2%)	55	83
5	H	186/286 (65%)	184 (99%)	2 (1%)	65	87
6	I	1135/1157 (98%)	1093 (96%)	42 (4%)	30	65
7	J	1122/1168 (96%)	1085 (97%)	37 (3%)	33	69
All	All	2695/2972 (91%)	2610 (97%)	85 (3%)	35	70

All (85) residues with a non-rotameric sidechain are listed below:

Mol	Chain	Res	Type
2	K	59	ILE
5	G	19	VAL
5	G	92	VAL
5	G	180	VAL
5	H	38	THR
5	H	191	ARG
6	I	11	ILE
6	I	30	ILE
6	I	65	ASN
6	I	117	ILE
6	I	155	VAL
6	I	204	LEU
6	I	261	VAL
6	I	514	PHE
6	I	538	LEU
6	I	550	VAL
6	I	581	THR
6	I	598	VAL
6	I	600	THR
6	I	615	VAL
6	I	635	THR
6	I	655	VAL
6	I	675	ASP
6	I	715	THR
6	I	727	VAL
6	I	766	ASN
6	I	811	ASN
6	I	823	VAL
6	I	878	THR
6	I	886	LYS
6	I	888	THR
6	I	890	LYS

Continued on next page...

Continued from previous page...

Mol	Chain	Res	Type
6	I	915	ASP
6	I	916	SER
6	I	943	LYS
6	I	979	LEU
6	I	984	VAL
6	I	1046	VAL
6	I	1056	VAL
6	I	1064	ASP
6	I	1112	ILE
6	I	1159	VAL
6	I	1186	VAL
6	I	1240	ASP
6	I	1254	VAL
6	I	1265	PHE
6	I	1293	VAL
6	I	1327	LEU
7	J	86	GLU
7	J	92	VAL
7	J	132	LEU
7	J	145	VAL
7	J	227	PHE
7	J	252	LEU
7	J	299	LEU
7	J	347	VAL
7	J	354	VAL
7	J	357	VAL
7	J	361	LEU
7	J	363	LEU
7	J	422	LEU
7	J	468	VAL
7	J	501	VAL
7	J	507	VAL
7	J	552	ILE
7	J	645	VAL
7	J	649	LYS
7	J	709	ARG
7	J	717	VAL
7	J	722	ILE
7	J	770	LEU
7	J	805	GLN
7	J	807	LEU
7	J	844	THR

Continued on next page...

Continued from previous page...

Mol	Chain	Res	Type
7	J	857	LEU
7	J	918	ILE
7	J	948	SER
7	J	967	VAL
7	J	1030	GLU
7	J	1134	ILE
7	J	1135	THR
7	J	1209	VAL
7	J	1280	VAL
7	J	1329	THR
7	J	1366	HIS

Sometimes sidechains can be flipped to improve hydrogen bonding and reduce clashes. All (9) such sidechains are listed below:

Mol	Chain	Res	Type
6	I	86	GLN
6	I	120	GLN
6	I	518	ASN
6	I	519	ASN
6	I	766	ASN
7	J	716	GLN
7	J	720	ASN
7	J	792	ASN
7	J	1084	GLN

5.3.3 RNA ⓘ

Mol	Chain	Analysed	Backbone Outliers	Pucker Outliers
3	R	10/19 (52%)	1 (10%)	1 (10%)

All (1) RNA backbone outliers are listed below:

Mol	Chain	Res	Type
3	R	11	A

All (1) RNA pucker outliers are listed below:

Mol	Chain	Res	Type
3	R	10	G

5.4 Non-standard residues in protein, DNA, RNA chains [i](#)

There are no non-standard protein/DNA/RNA residues in this entry.

5.5 Carbohydrates [i](#)

There are no oligosaccharides in this entry.

5.6 Ligand geometry [i](#)

Of 4 ligands modelled in this entry, 3 are monoatomic - leaving 1 for Mogul analysis.

In the following table, the Counts columns list the number of bonds (or angles) for which Mogul statistics could be retrieved, the number of bonds (or angles) that are observed in the model and the number of bonds (or angles) that are defined in the Chemical Component Dictionary. The Link column lists molecule types, if any, to which the group is linked. The Z score for a bond length (or angle) is the number of standard deviations the observed value is removed from the expected value. A bond length (or angle) with $|Z| > 2$ is considered an outlier worth inspection. RMSZ is the root-mean-square of all Z scores of the bond lengths (or angles).

Mol	Type	Chain	Res	Link	Bond lengths			Bond angles		
					Counts	RMSZ	$\# Z > 2$	Counts	RMSZ	$\# Z > 2$
8	1N7	I	1401	-	30,30,46	0.41	0	47,48,72	0.86	0

In the following table, the Chirals column lists the number of chiral outliers, the number of chiral centers analysed, the number of these observed in the model and the number defined in the Chemical Component Dictionary. Similar counts are reported in the Torsion and Rings columns. '-' means no outliers of that kind were identified.

Mol	Type	Chain	Res	Link	Chirals	Torsions	Rings
8	1N7	I	1401	-	-	0/7/72/92	0/4/4/4

There are no bond length outliers.

There are no bond angle outliers.

There are no chirality outliers.

There are no torsion outliers.

There are no ring outliers.

No monomer is involved in short contacts.

5.7 Other polymers

There are no such residues in this entry.

5.8 Polymer linkage issues

There are no chain breaks in this entry.

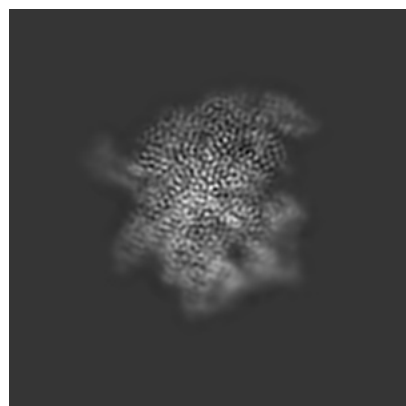
6 Map visualisation [i](#)

This section contains visualisations of the EMDB entry EMD-75281. These allow visual inspection of the internal detail of the map and identification of artifacts.

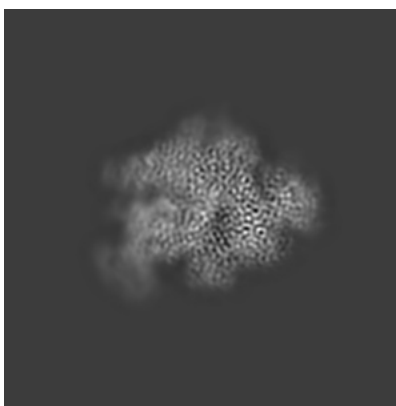
Images derived from a raw map, generated by summing the deposited half-maps, are presented below the corresponding image components of the primary map to allow further visual inspection and comparison with those of the primary map.

6.1 Orthogonal projections [i](#)

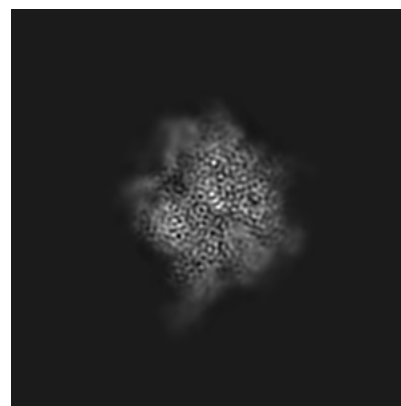
6.1.1 Primary map



X

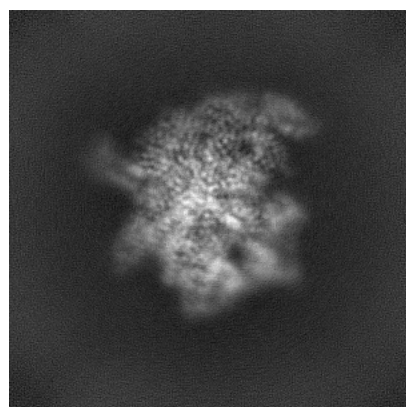


Y

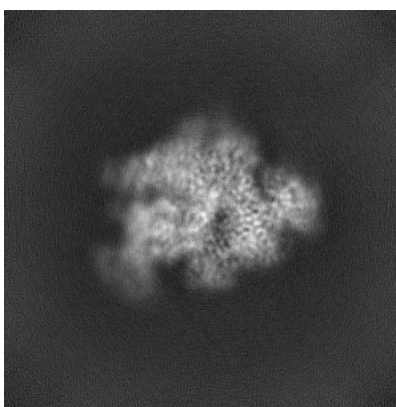


Z

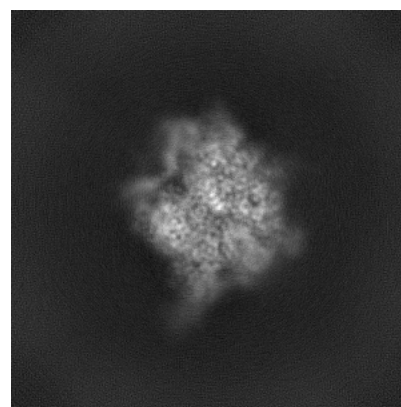
6.1.2 Raw map



X



Y

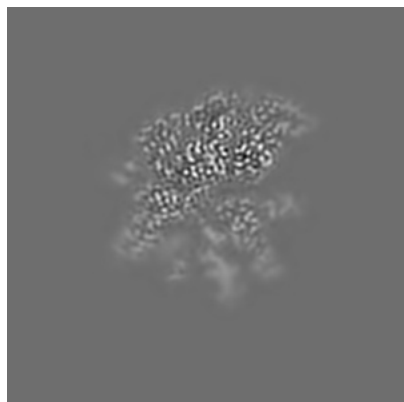


Z

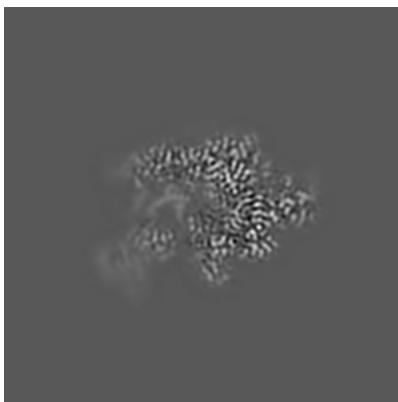
The images above show the map projected in three orthogonal directions.

6.2 Central slices [i](#)

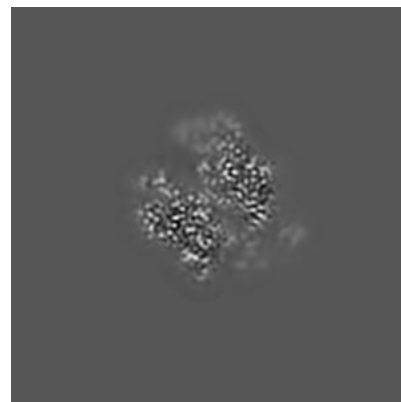
6.2.1 Primary map



X Index: 192

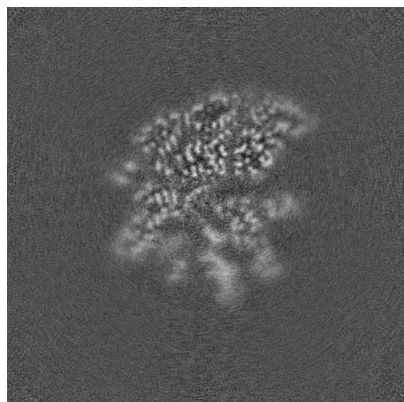


Y Index: 192

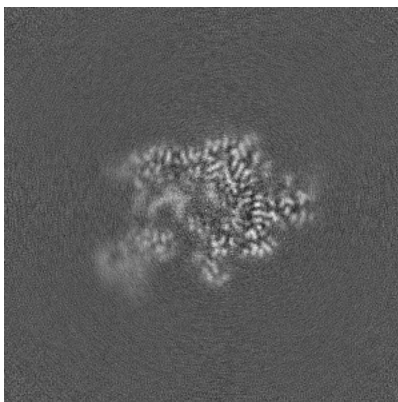


Z Index: 192

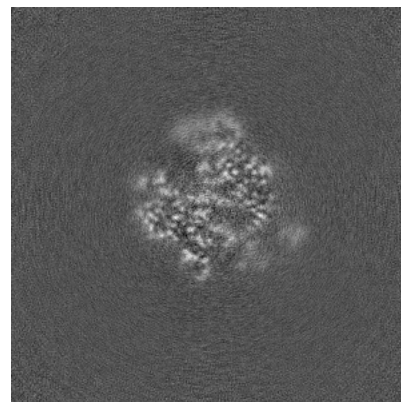
6.2.2 Raw map



X Index: 192



Y Index: 192

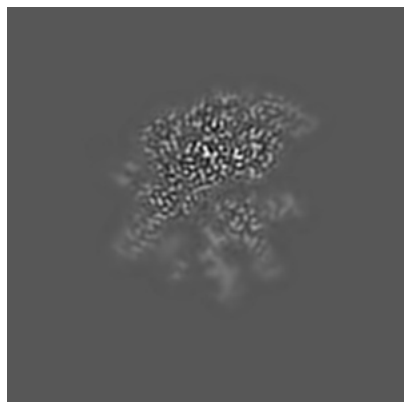


Z Index: 192

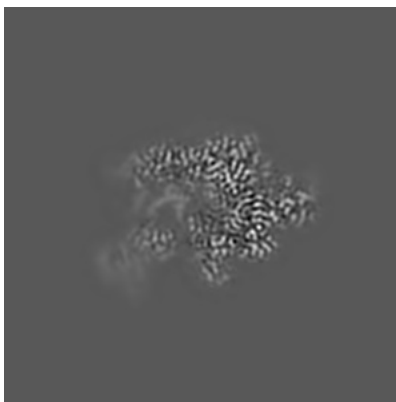
The images above show central slices of the map in three orthogonal directions.

6.3 Largest variance slices [i](#)

6.3.1 Primary map



X Index: 194

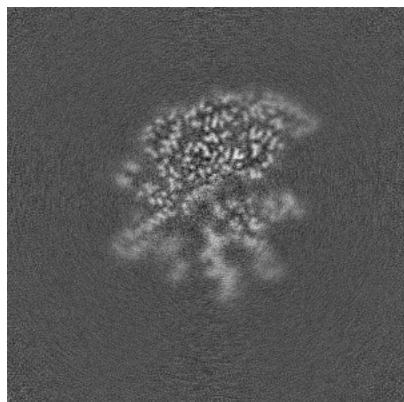


Y Index: 192

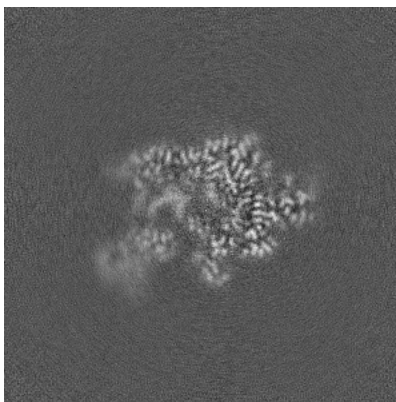


Z Index: 233

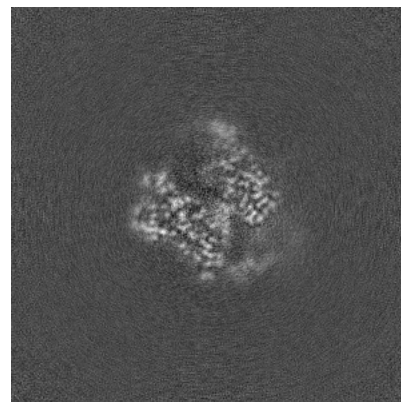
6.3.2 Raw map



X Index: 195



Y Index: 192

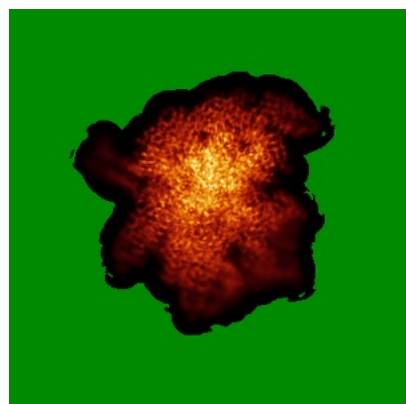


Z Index: 200

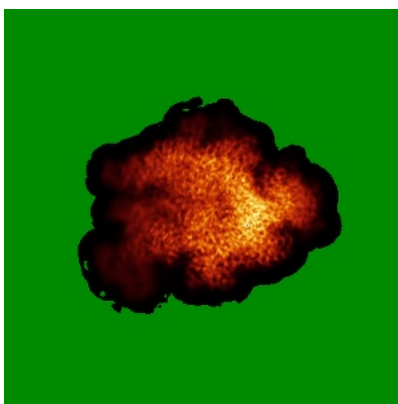
The images above show the largest variance slices of the map in three orthogonal directions.

6.4 Orthogonal standard-deviation projections (False-color) [i](#)

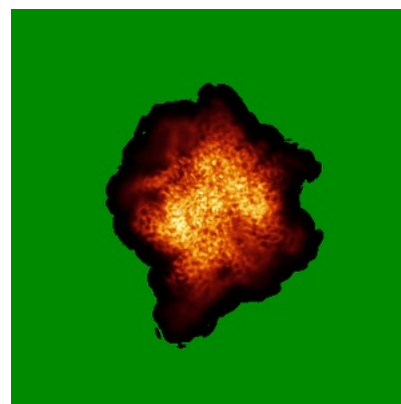
6.4.1 Primary map



X

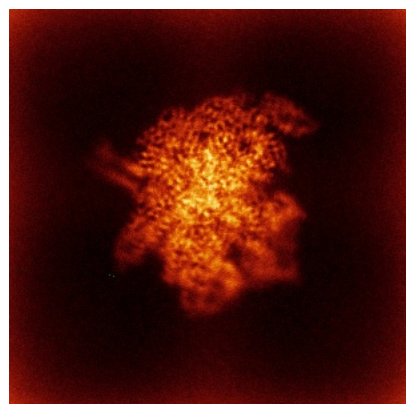


Y

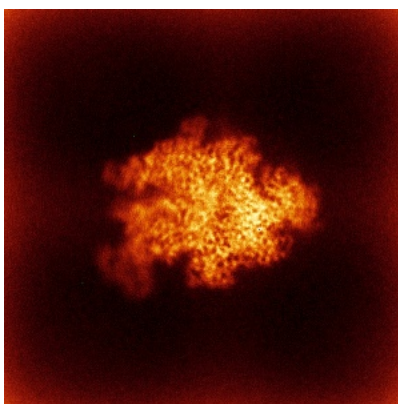


Z

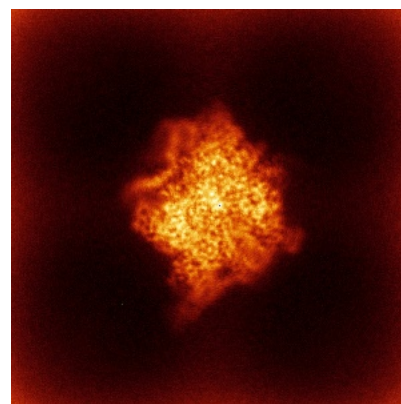
6.4.2 Raw map



X



Y

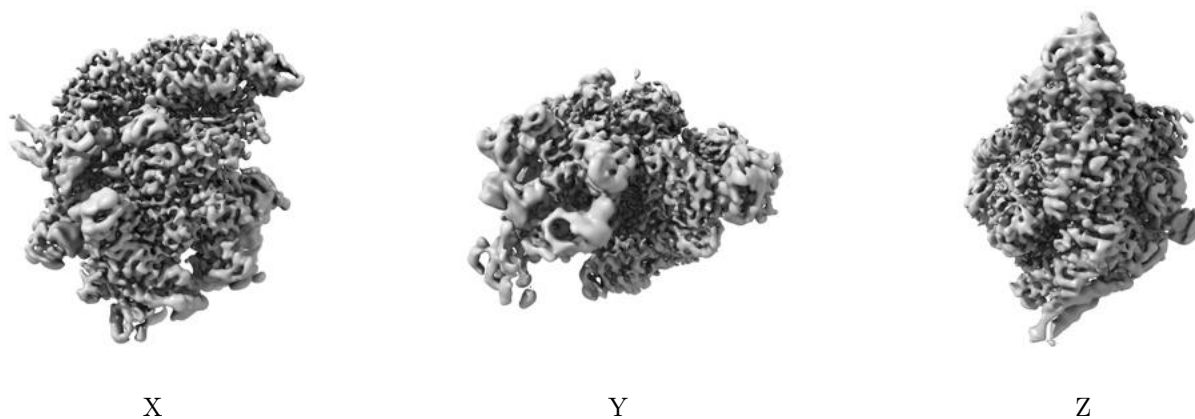


Z

The images above show the map standard deviation projections with false color in three orthogonal directions. Minimum values are shown in green, max in blue, and dark to light orange shades represent small to large values respectively.

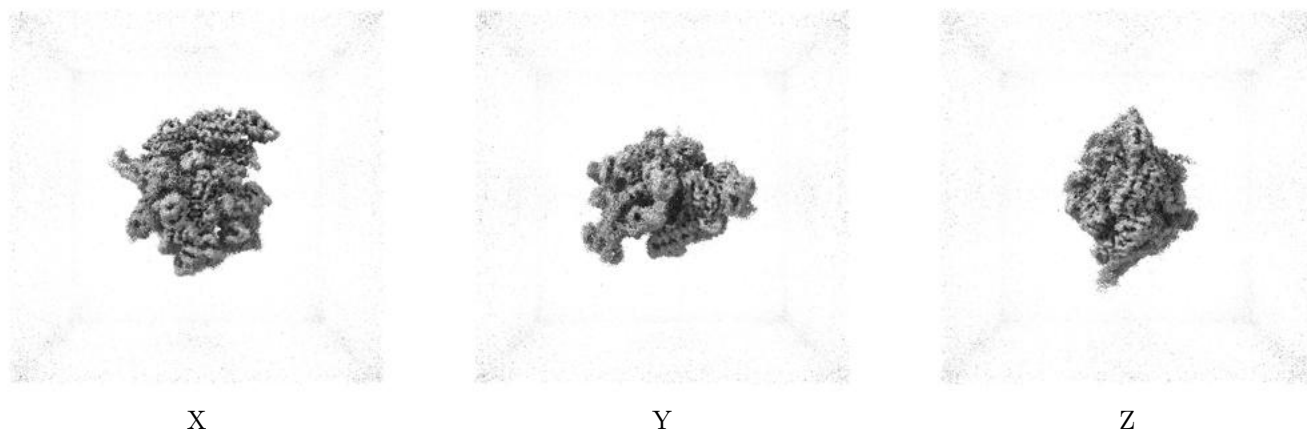
6.5 Orthogonal surface views [i](#)

6.5.1 Primary map



The images above show the 3D surface view of the map at the recommended contour level 0.02. These images, in conjunction with the slice images, may facilitate assessment of whether an appropriate contour level has been provided.

6.5.2 Raw map



These images show the 3D surface of the raw map. The raw map's contour level was selected so that its surface encloses the same volume as the primary map does at its recommended contour level.

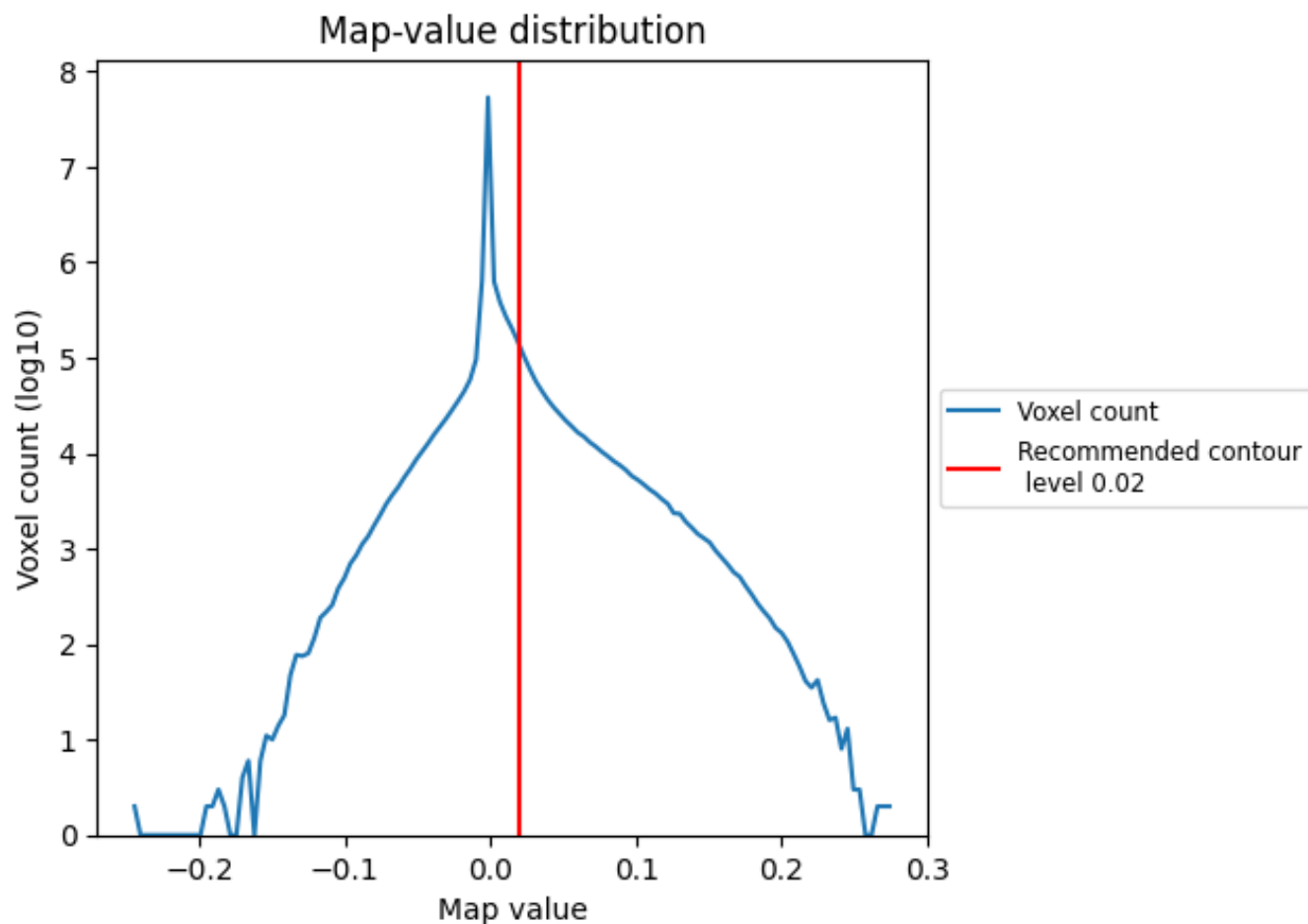
6.6 Mask visualisation [i](#)

This section was not generated. No masks/segmentation were deposited.

7 Map analysis [i](#)

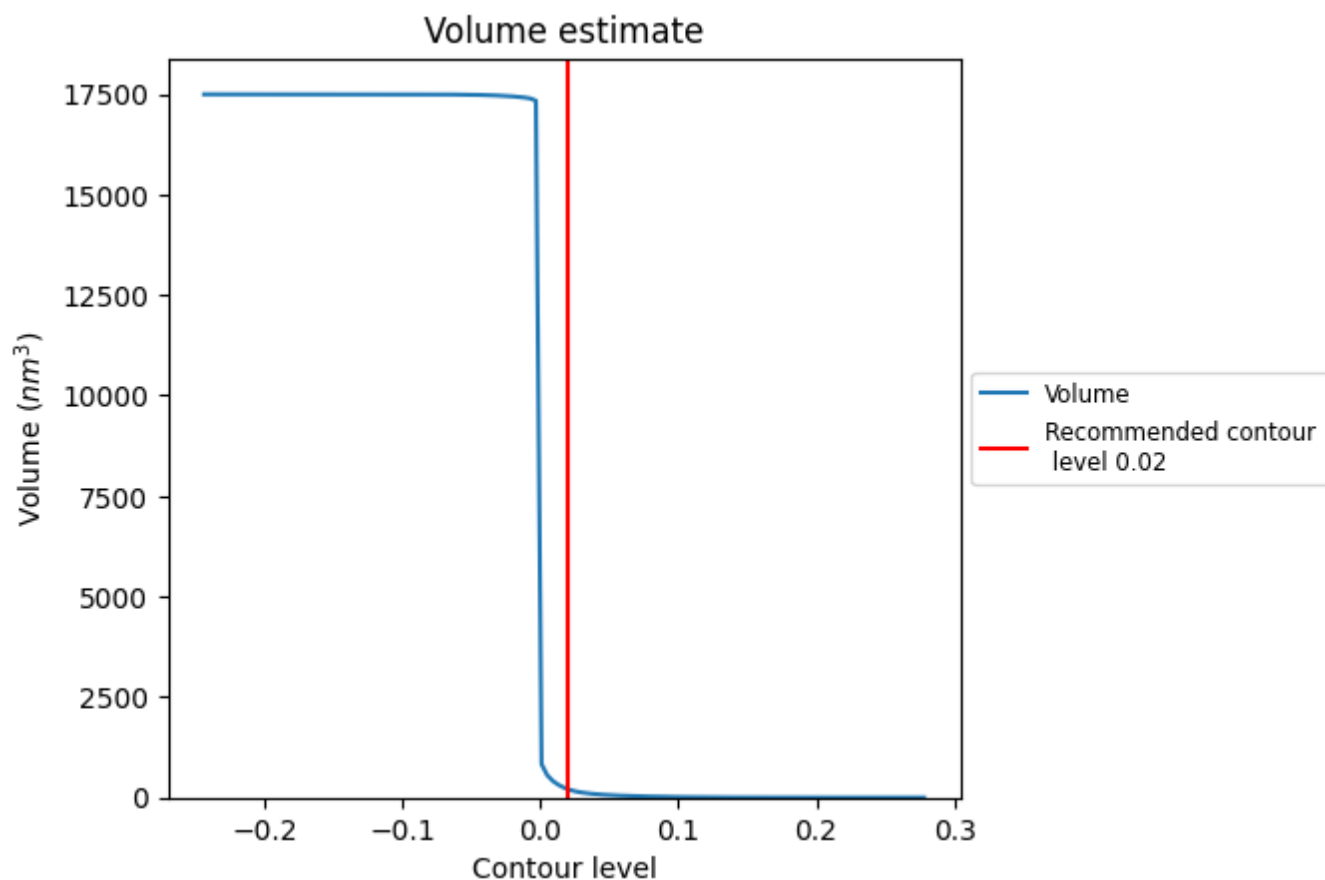
This section contains the results of statistical analysis of the map.

7.1 Map-value distribution [i](#)



The map-value distribution is plotted in 128 intervals along the x-axis. The y-axis is logarithmic. A spike in this graph at zero usually indicates that the volume has been masked.

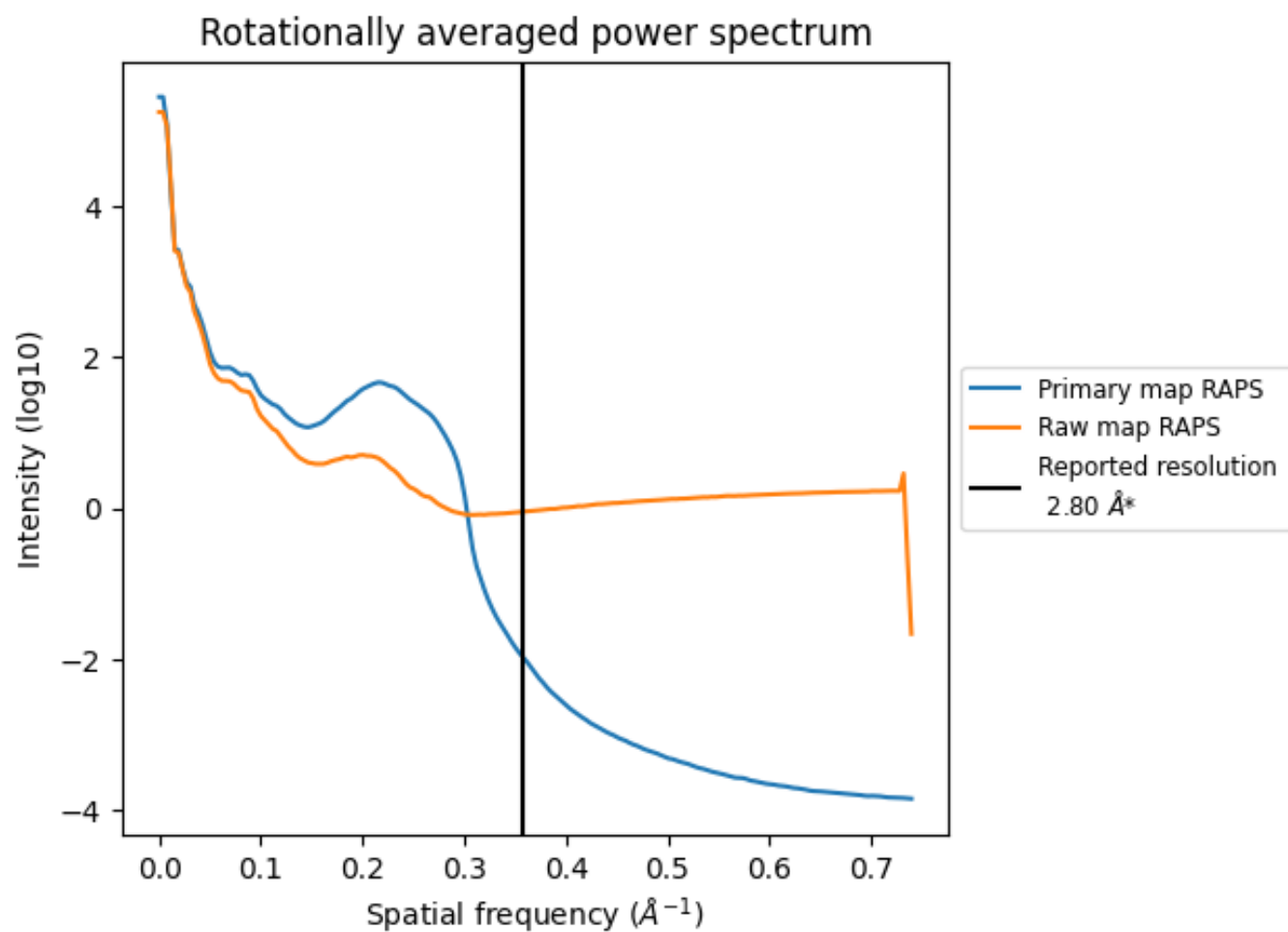
7.2 Volume estimate [i](#)



The volume at the recommended contour level is 207 nm³; this corresponds to an approximate mass of 187 kDa.

The volume estimate graph shows how the enclosed volume varies with the contour level. The recommended contour level is shown as a vertical line and the intersection between the line and the curve gives the volume of the enclosed surface at the given level.

7.3 Rotationally averaged power spectrum ⓘ

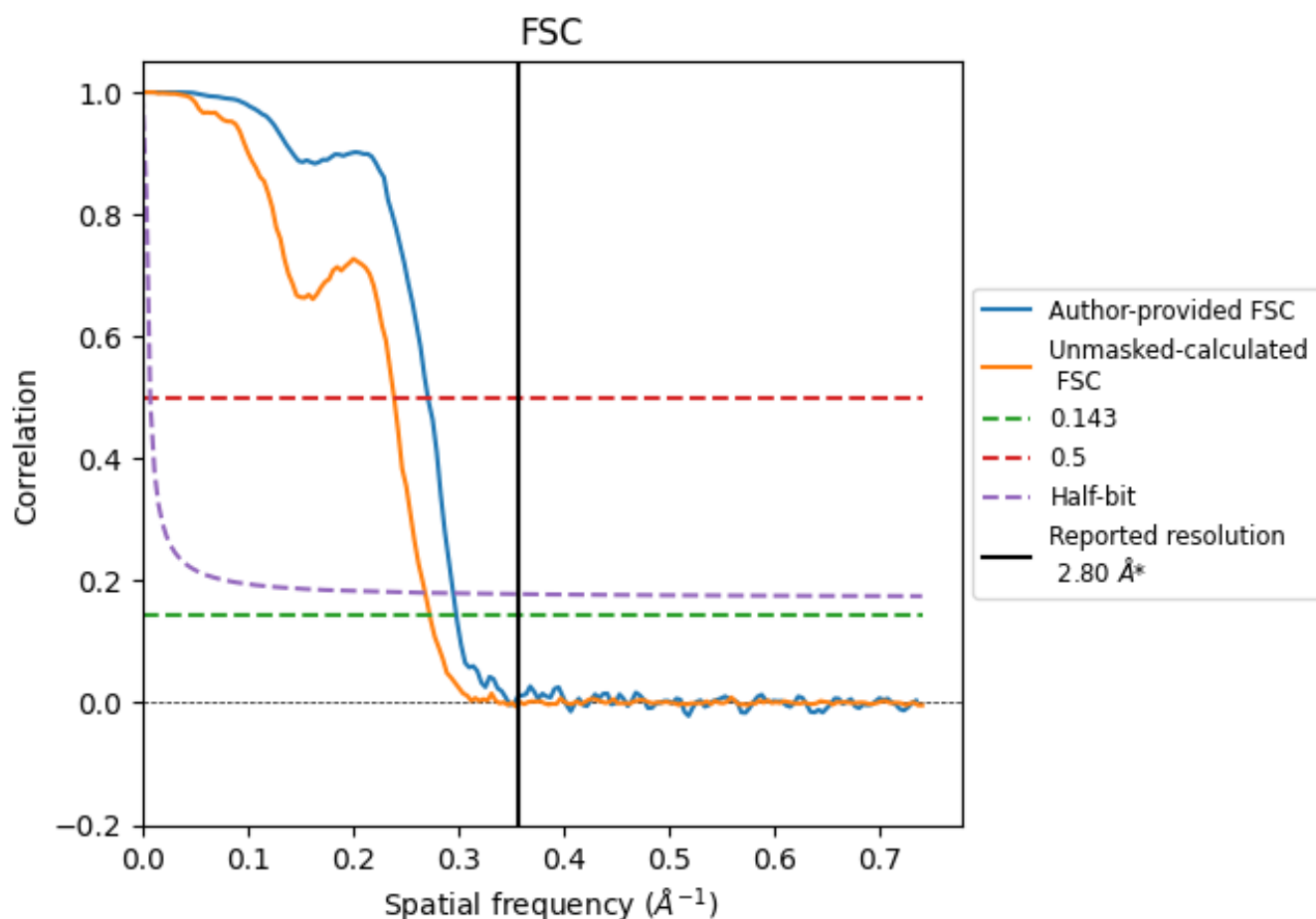


*Reported resolution corresponds to spatial frequency of 0.357 \AA^{-1}

8 Fourier-Shell correlation [i](#)

Fourier-Shell Correlation (FSC) is the most commonly used method to estimate the resolution of single-particle and subtomogram-averaged maps. The shape of the curve depends on the imposed symmetry, mask and whether or not the two 3D reconstructions used were processed from a common reference. The reported resolution is shown as a black line. A curve is displayed for the half-bit criterion in addition to lines showing the 0.143 gold standard cut-off and 0.5 cut-off.

8.1 FSC [i](#)



*Reported resolution corresponds to spatial frequency of 0.357 \AA^{-1}

8.2 Resolution estimates [i](#)

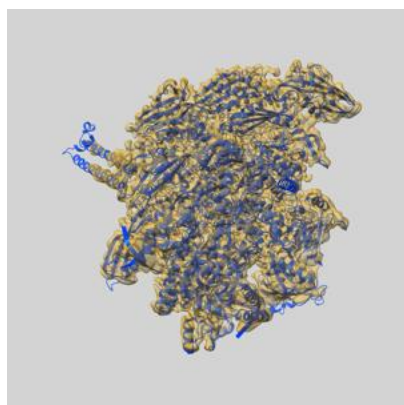
Resolution estimate (Å)	Estimation criterion (FSC cut-off)		
	0.143	0.5	Half-bit
Reported by author	-	-	-
Author-provided FSC curve	3.36	3.69	3.39
Unmasked-calculated*	3.67	4.19	3.73

*Resolution estimate based on FSC curve calculated by comparison of deposited half-maps.

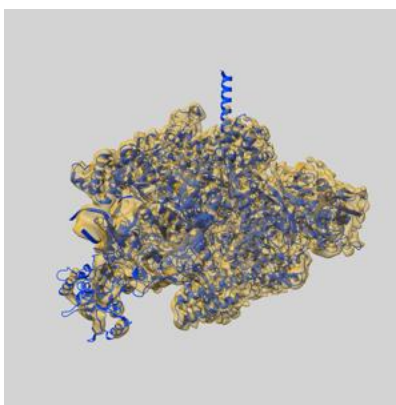
9 Map-model fit [i](#)

This section contains information regarding the fit between EMDB map EMD-75281 and PDB model 10MC. Per-residue inclusion information can be found in section [3](#) on page [7](#).

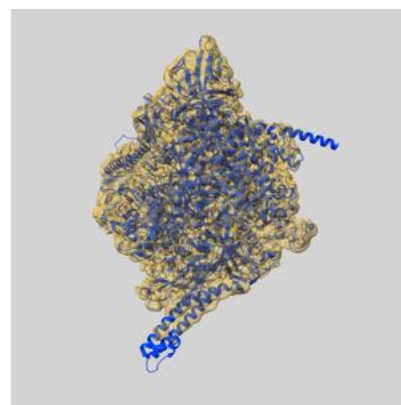
9.1 Map-model overlay [i](#)



X



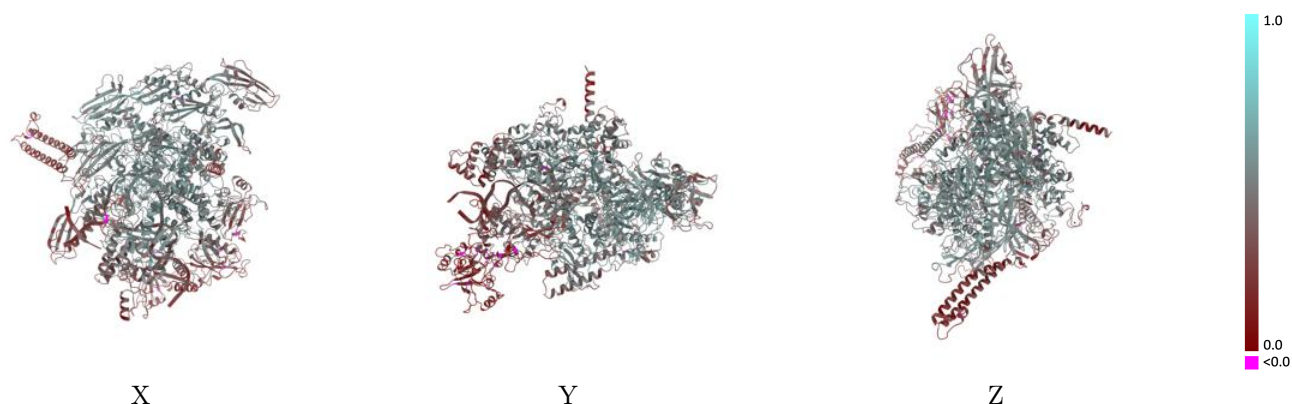
Y



Z

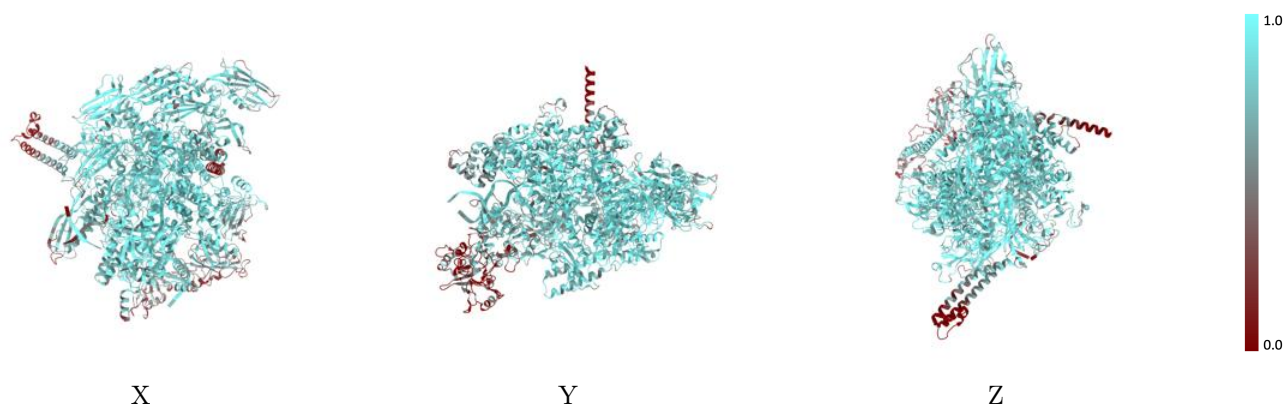
The images above show the 3D surface view of the map at the recommended contour level 0.02 at 50% transparency in yellow overlaid with a ribbon representation of the model coloured in blue. These images allow for the visual assessment of the quality of fit between the atomic model and the map.

9.2 Q-score mapped to coordinate model [i](#)



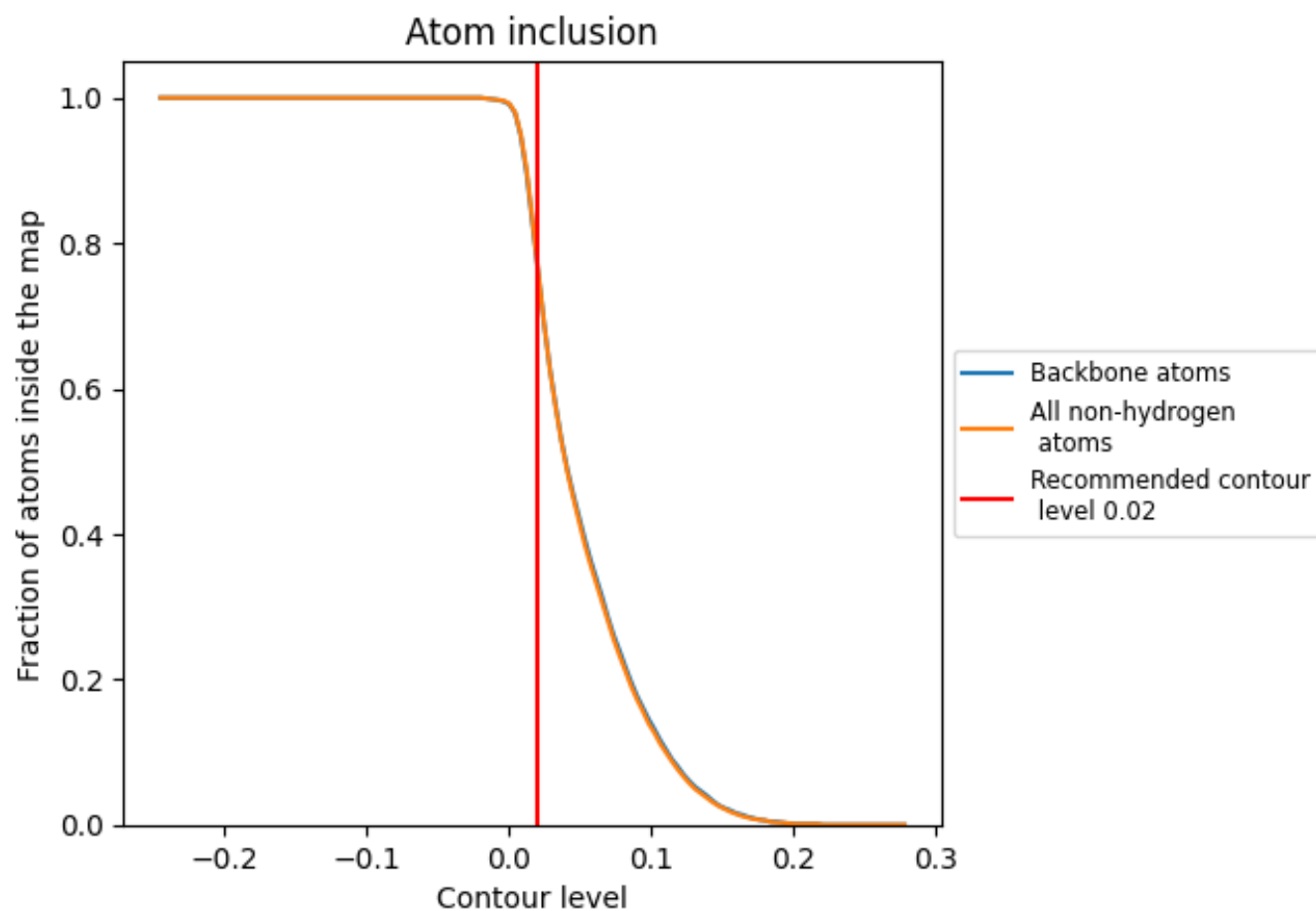
The images above show the model with each residue coloured according to its Q-score. This shows their resolvability in the map with higher Q-score values reflecting better resolvability. Please note: Q-score is calculating the resolvability of atoms, and thus high values are only expected at resolutions at which atoms can be resolved. Low Q-score values may therefore be expected for many entries.

9.3 Atom inclusion mapped to coordinate model [i](#)



The images above show the model with each residue coloured according to its atom inclusion. This shows to what extent they are inside the map at the recommended contour level (0.02).

9.4 Atom inclusion [i](#)



At the recommended contour level, 78% of all backbone atoms, 78% of all non-hydrogen atoms, are inside the map.

9.5 Map-model fit summary ⓘ

The table lists the average atom inclusion at the recommended contour level (0.02) and Q-score for the entire model and for each chain.

Chain	Atom inclusion	Q-score
All	<div></div> 0.7790	<div></div> 0.4390
A	<div></div> 0.7830	<div></div> 0.2900
B	<div></div> 0.7840	<div></div> 0.3310
G	<div></div> 0.8760	<div></div> 0.5200
H	<div></div> 0.7830	<div></div> 0.4570
I	<div></div> 0.7860	<div></div> 0.4520
J	<div></div> 0.7800	<div></div> 0.4260
K	<div></div> 0.4840	<div></div> 0.3810
R	<div></div> 0.9530	<div></div> 0.4930

1.0

0.0

<0.0