



Full wwPDB X-ray Structure Validation Report ⓘ

Apr 27, 2026 – 04:17 PM EDT

PDB ID : 10DV / pdb_000010dv
Title : Room Temperature X-Ray Structure of SARS CoV-2 Main Protease Intermediate Precursor with Ensitrelvir (ESV)
Authors : Bhandari, D.; Kovalevsky, A.; Louis, J.M.
Deposited on : 2026-01-14
Resolution : 2.05 Å(reported)

This is a Full wwPDB X-ray Structure Validation Report for a publicly released PDB entry.

We welcome your comments at validation@mail.wwpdb.org

A user guide is available at

<https://www.wwpdb.org/validation/2017/XrayValidationReportHelp>

with specific help available everywhere you see the ⓘ symbol.

The types of validation reports are described at

<http://www.wwpdb.org/validation/2017/FAQs#types>.

The following versions of software and data (see [references ⓘ](#)) were used in the production of this report:

MolProbity : 4-5-2 with Phenix2.0
Mogul : 2022.3.0, CSD as543be (2022)
Xtriage (Phenix) : 2.0
EDS : 3.0
Buster-report : wwPDB partial adaption of 1.1.7 (2018)
Percentile statistics : 20250101.v01 (using entries in the PDB archive January 1st 2025)
CCP4 : 9.0.010 (Gargrove)
Density-Fitness : 1.0.12
Ideal geometry (proteins) : Engh & Huber (2001)
Ideal geometry (DNA, RNA) : Parkinson et al. (1996)
Validation Pipeline (wwPDB-VP) : 2.49

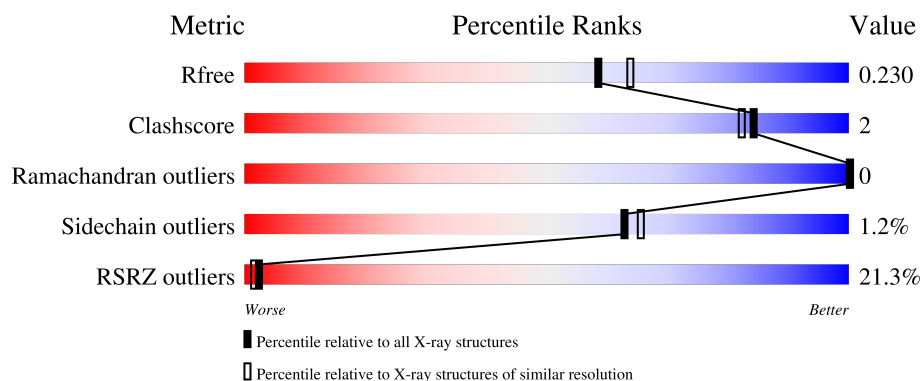
1 Overall quality at a glance

The following experimental techniques were used to determine the structure:

X-RAY DIFFRACTION

The reported resolution of this entry is 2.05 Å.

Percentile scores (ranging between 0-100) for global validation metrics of the entry are shown in the following graphic. The table shows the number of entries on which the scores are based.



Metric	Whole archive (#Entries)	Similar resolution (#Entries, resolution range(Å))
R_{free}	180053	2260 (2.04-2.04)
Clashscore	190562	2333 (2.04-2.04)
Ramachandran outliers	187476	2318 (2.04-2.04)
Sidechain outliers	187428	2318 (2.04-2.04)
RSRZ outliers	180081	2260 (2.04-2.04)

The table below summarises the geometric issues observed across the polymeric chains and their fit to the electron density. The red, orange, yellow and green segments of the lower bar indicate the fraction of residues that contain outliers for ≥ 3 , 2, 1 and 0 types of geometric quality criteria respectively. A grey segment represents the fraction of residues that are not modelled. The numeric value for each fraction is indicated below the corresponding segment, with a dot representing fractions $\leq 5\%$. The upper red bar (where present) indicates the fraction of residues that have poor fit to the electron density. The numeric value is given above the bar.

Mol	Chain	Length	Quality of chain
1	A	373	
1	B	373	

2 Entry composition

There are 3 unique types of molecules in this entry. The entry contains 4854 atoms, of which 0 are hydrogens and 0 are deuteriums.

In the tables below, the ZeroOcc column contains the number of atoms modelled with zero occupancy, the AltConf column contains the number of residues with at least one atom in alternate conformation and the Trace column contains the number of residues modelled with at most 2 atoms.

- Molecule 1 is a protein called Replicase polypeptide 1ab, Immunoglobulin G-binding protein G.

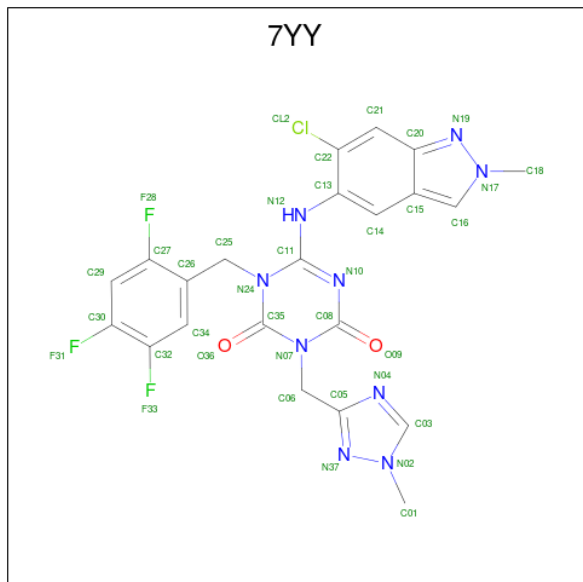
Mol	Chain	Residues	Atoms					ZeroOcc	AltConf	Trace
1	A	301	Total	C	N	O	S	0	0	0
			2328	1474	396	437	21			
1	B	301	Total	C	N	O	S	0	0	0
			2328	1474	396	437	21			

There are 22 discrepancies between the modelled and reference sequences:

Chain	Residue	Modelled	Actual	Comment	Reference
A	145	ALA	CYS	engineered mutation	UNP P0DTD1
A	310	MET	-	linker	UNP P0DTD1
A	311	GLN	-	linker	UNP P0DTD1
A	366	LEU	-	expression tag	UNP P19909
A	367	GLU	-	expression tag	UNP P19909
A	368	HIS	-	expression tag	UNP P19909
A	369	HIS	-	expression tag	UNP P19909
A	370	HIS	-	expression tag	UNP P19909
A	371	HIS	-	expression tag	UNP P19909
A	372	HIS	-	expression tag	UNP P19909
A	373	HIS	-	expression tag	UNP P19909
B	145	ALA	CYS	engineered mutation	UNP P0DTD1
B	310	MET	-	linker	UNP P0DTD1
B	311	GLN	-	linker	UNP P0DTD1
B	366	LEU	-	expression tag	UNP P19909
B	367	GLU	-	expression tag	UNP P19909
B	368	HIS	-	expression tag	UNP P19909
B	369	HIS	-	expression tag	UNP P19909
B	370	HIS	-	expression tag	UNP P19909
B	371	HIS	-	expression tag	UNP P19909
B	372	HIS	-	expression tag	UNP P19909
B	373	HIS	-	expression tag	UNP P19909

- Molecule 2 is 6-[(6-chloranyl-2-methyl-indazol-5-yl)amino]-3-[(1-methyl-1,2,4-triazol-3-yl

1)methyl]-1-[[2,4,5-tris(fluoranyl)phenyl]methyl]-1,3,5-triazine-2,4-dione (CCD ID: 7YY)
(formula: C₂₂H₁₇ClF₃N₉O₂) (labeled as "Ligand of Interest" by depositor).



Mol	Chain	Residues	Atoms						ZeroOcc	AltConf
2	A	1	Total	C	Cl	F	N	O	0	0
			37	22	1	3	9	2		
2	B	1	Total	C	Cl	F	N	O	0	0
			37	22	1	3	9	2		

- Molecule 3 is water.

Mol	Chain	Residues	Atoms		ZeroOcc	AltConf
3	A	65	Total	O	0	0
			65	65		
3	B	59	Total	O	0	0
			59	59		

4 Data and refinement statistics

Property	Value	Source
Space group	P 1	Depositor
Cell constants a, b, c, α , β , γ	54.89Å 68.34Å 68.36Å 73.99° 77.12° 85.52°	Depositor
Resolution (Å)	22.32 – 2.05 22.32 – 2.05	Depositor EDS
% Data completeness (in resolution range)	94.2 (22.32-2.05) 94.6 (22.32-2.05)	Depositor EDS
R_{merge}	0.13	Depositor
R_{sym}	(Not available)	Depositor
$\langle I/\sigma(I) \rangle$ ¹	1.39 (at 2.04Å)	Xtriage
Refinement program	PHENIX 1.19	Depositor
R, R_{free}	0.211 , 0.234 0.208 , 0.230	Depositor DCC
R_{free} test set	2781 reflections (4.42%)	wwPDB-VP
Wilson B-factor (Å ²)	34.3	Xtriage
Anisotropy	0.169	Xtriage
Bulk solvent k_{sol} (e/Å ³), B_{sol} (Å ²)	0.40 , 54.0	EDS
L-test for twinning ²	$\langle L \rangle = 0.52$, $\langle L^2 \rangle = 0.36$	Xtriage
Estimated twinning fraction	No twinning to report.	Xtriage
F_o, F_c correlation	0.91	EDS
Total number of atoms	4854	wwPDB-VP
Average B, all atoms (Å ²)	44.0	wwPDB-VP

Xtriage's analysis on translational NCS is as follows: *The largest off-origin peak in the Patterson function is 8.15% of the height of the origin peak. No significant pseudotranslation is detected.*

¹Intensities estimated from amplitudes.

²Theoretical values of $\langle |L| \rangle$, $\langle L^2 \rangle$ for acentric reflections are 0.5, 0.333 respectively for untwinned datasets, and 0.375, 0.2 for perfectly twinned datasets.

5 Model quality

5.1 Standard geometry

Bond lengths and bond angles in the following residue types are not validated in this section: 7YY

The Z score for a bond length (or angle) is the number of standard deviations the observed value is removed from the expected value. A bond length (or angle) with $|Z| > 5$ is considered an outlier worth inspection. RMSZ is the root-mean-square of all Z scores of the bond lengths (or angles).

Mol	Chain	Bond lengths		Bond angles	
		RMSZ	$\# Z > 5$	RMSZ	$\# Z > 5$
1	A	0.30	0/2380	0.43	0/3235
1	B	0.19	0/2380	0.35	0/3235
All	All	0.25	0/4760	0.39	0/6470

There are no bond length outliers.

There are no bond angle outliers.

There are no chirality outliers.

There are no planarity outliers.

5.2 Too-close contacts

In the following table, the Non-H and H(model) columns list the number of non-hydrogen atoms and hydrogen atoms in the chain respectively. The H(added) column lists the number of hydrogen atoms added and optimized by MolProbity. The Clashes column lists the number of clashes within the asymmetric unit, whereas Symm-Clashes lists symmetry-related clashes.

Mol	Chain	Non-H	H(model)	H(added)	Clashes	Symm-Clashes
1	A	2328	0	2278	10	0
1	B	2328	0	2278	12	0
2	A	37	0	0	1	0
2	B	37	0	0	2	0
3	A	65	0	0	2	0
3	B	59	0	0	1	0
All	All	4854	0	4556	21	0

The all-atom clashscore is defined as the number of clashes found per 1000 atoms (including hydrogen atoms). The all-atom clashscore for this structure is 2.

All (21) close contacts within the same asymmetric unit are listed below, sorted by their clash

magnitude.

Atom-1	Atom-2	Interatomic distance (Å)	Clash overlap (Å)
1:B:45:THR:H	1:B:48:ASP:HB2	1.59	0.66
1:B:221:ASN:C	1:B:221:ASN:HD22	2.03	0.65
1:B:233:VAL:HG21	1:B:269:LYS:HD2	1.86	0.57
1:A:45:THR:H	1:A:48:ASP:HB2	1.70	0.56
1:B:165:MET:HA	2:B:401:7YY:O36	2.05	0.55
1:A:165:MET:HA	2:A:401:7YY:O36	2.07	0.55
1:B:189:GLN:HG3	2:B:401:7YY:F28	2.00	0.52
1:B:236:LYS:NZ	3:B:503:HOH:O	2.44	0.51
1:B:45:THR:O	1:B:49:MET:HG3	2.13	0.48
1:A:285:ALA:HB3	1:B:285:ALA:HB3	1.93	0.48
1:A:142:ASN:ND2	3:A:505:HOH:O	2.50	0.45
1:B:235:MET:HE3	1:B:235:MET:HB3	1.87	0.44
1:A:56:ASP:O	1:A:60:ARG:HD3	2.18	0.43
1:A:109:GLY:HA2	1:A:200:ILE:HD13	2.01	0.43
1:B:130:MET:HE2	1:B:130:MET:HB2	1.87	0.43
1:A:127:GLN:HG2	3:A:550:HOH:O	2.18	0.42
1:A:175:THR:HG22	1:A:181:PHE:HA	2.00	0.42
1:B:108:PRO:HB3	1:B:132:PRO:HA	2.01	0.42
1:B:45:THR:HG22	1:B:46:SER:H	1.84	0.42
1:A:227:LEU:HD12	1:A:227:LEU:HA	1.86	0.41
1:A:17:MET:HG3	1:A:117:CYS:SG	2.60	0.41

There are no symmetry-related clashes.

5.3 Torsion angles ⓘ

5.3.1 Protein backbone ⓘ

In the following table, the Percentiles column shows the percent Ramachandran outliers of the chain as a percentile score with respect to all X-ray entries followed by that with respect to entries of similar resolution.

The Analysed column shows the number of residues for which the backbone conformation was analysed, and the total number of residues.

Mol	Chain	Analysed	Favoured	Allowed	Outliers	Percentiles	
1	A	299/373 (80%)	291 (97%)	8 (3%)	0	100	100
1	B	299/373 (80%)	289 (97%)	10 (3%)	0	100	100
All	All	598/746 (80%)	580 (97%)	18 (3%)	0	100	100

There are no Ramachandran outliers to report.

5.3.2 Protein sidechains ⓘ

In the following table, the Percentiles column shows the percent sidechain outliers of the chain as a percentile score with respect to all X-ray entries followed by that with respect to entries of similar resolution.

The Analysed column shows the number of residues for which the sidechain conformation was analysed, and the total number of residues.

Mol	Chain	Analysed	Rotameric	Outliers	Percentiles	
1	A	258/318 (81%)	254 (98%)	4 (2%)	55	56
1	B	258/318 (81%)	256 (99%)	2 (1%)	73	77
All	All	516/636 (81%)	510 (99%)	6 (1%)	63	65

All (6) residues with a non-rotameric sidechain are listed below:

Mol	Chain	Res	Type
1	A	5	LYS
1	A	53	ASN
1	A	90	LYS
1	A	279	ARG
1	B	45	THR
1	B	221	ASN

Sometimes sidechains can be flipped to improve hydrogen bonding and reduce clashes. All (5) such sidechains are listed below:

Mol	Chain	Res	Type
1	B	69	GLN
1	B	164	HIS
1	B	189	GLN
1	B	221	ASN
1	B	277	ASN

5.3.3 RNA ⓘ

There are no RNA molecules in this entry.

5.4 Non-standard residues in protein, DNA, RNA chains [i](#)

There are no non-standard protein/DNA/RNA residues in this entry.

5.5 Carbohydrates [i](#)

There are no oligosaccharides in this entry.

5.6 Ligand geometry [i](#)

2 ligands are modelled in this entry.

In the following table, the Counts columns list the number of bonds (or angles) for which Mogul statistics could be retrieved, the number of bonds (or angles) that are observed in the model and the number of bonds (or angles) that are defined in the Chemical Component Dictionary. The Link column lists molecule types, if any, to which the group is linked. The Z score for a bond length (or angle) is the number of standard deviations the observed value is removed from the expected value. A bond length (or angle) with $|Z| > 2$ is considered an outlier worth inspection. RMSZ is the root-mean-square of all Z scores of the bond lengths (or angles).

Mol	Type	Chain	Res	Link	Bond lengths			Bond angles		
					Counts	RMSZ	$\# Z > 2$	Counts	RMSZ	$\# Z > 2$
2	7YY	B	401	-	39,41,41	1.33	4 (10%)	48,61,61	2.81	6 (12%)
2	7YY	A	401	-	39,41,41	1.30	3 (7%)	48,61,61	2.76	6 (12%)

In the following table, the Chirals column lists the number of chiral outliers, the number of chiral centers analysed, the number of these observed in the model and the number defined in the Chemical Component Dictionary. Similar counts are reported in the Torsion and Rings columns. '-' means no outliers of that kind were identified.

Mol	Type	Chain	Res	Link	Chirals	Torsions	Rings
2	7YY	B	401	-	-	1/12/12/12	0/5/5/5
2	7YY	A	401	-	-	1/12/12/12	0/5/5/5

All (7) bond length outliers are listed below:

Mol	Chain	Res	Type	Atoms	Z	Observed(Å)	Ideal(Å)
2	B	401	7YY	C11-N12	-6.06	1.28	1.36
2	A	401	7YY	C11-N12	-5.87	1.28	1.36
2	B	401	7YY	C11-N10	2.90	1.39	1.32
2	A	401	7YY	C11-N10	2.76	1.39	1.32
2	B	401	7YY	C13-C22	2.16	1.44	1.39
2	A	401	7YY	C13-C22	2.16	1.44	1.39

Continued on next page...

Continued from previous page...

Mol	Chain	Res	Type	Atoms	Z	Observed(Å)	Ideal(Å)
2	B	401	7YY	C20-N19	2.05	1.35	1.33

All (12) bond angle outliers are listed below:

Mol	Chain	Res	Type	Atoms	Z	Observed(°)	Ideal(°)
2	B	401	7YY	N24-C11-N10	-17.47	113.93	124.07
2	A	401	7YY	N24-C11-N10	-17.06	114.17	124.07
2	A	401	7YY	O09-C08-N07	3.74	123.24	118.77
2	B	401	7YY	O09-C08-N07	3.65	123.13	118.77
2	A	401	7YY	C11-N10-C08	3.03	126.99	118.00
2	B	401	7YY	C11-N10-C08	3.02	126.96	118.00
2	A	401	7YY	N07-C08-N10	-2.71	114.66	119.16
2	B	401	7YY	N07-C08-N10	-2.57	114.89	119.16
2	B	401	7YY	C15-C16-N17	-2.44	106.26	108.08
2	A	401	7YY	C15-C16-N17	-2.44	106.27	108.08
2	A	401	7YY	C22-C21-C20	-2.30	117.56	119.72
2	B	401	7YY	C22-C21-C20	-2.28	117.58	119.72

There are no chirality outliers.

All (2) torsion outliers are listed below:

Mol	Chain	Res	Type	Atoms
2	A	401	7YY	C22-C13-N12-C11
2	B	401	7YY	C22-C13-N12-C11

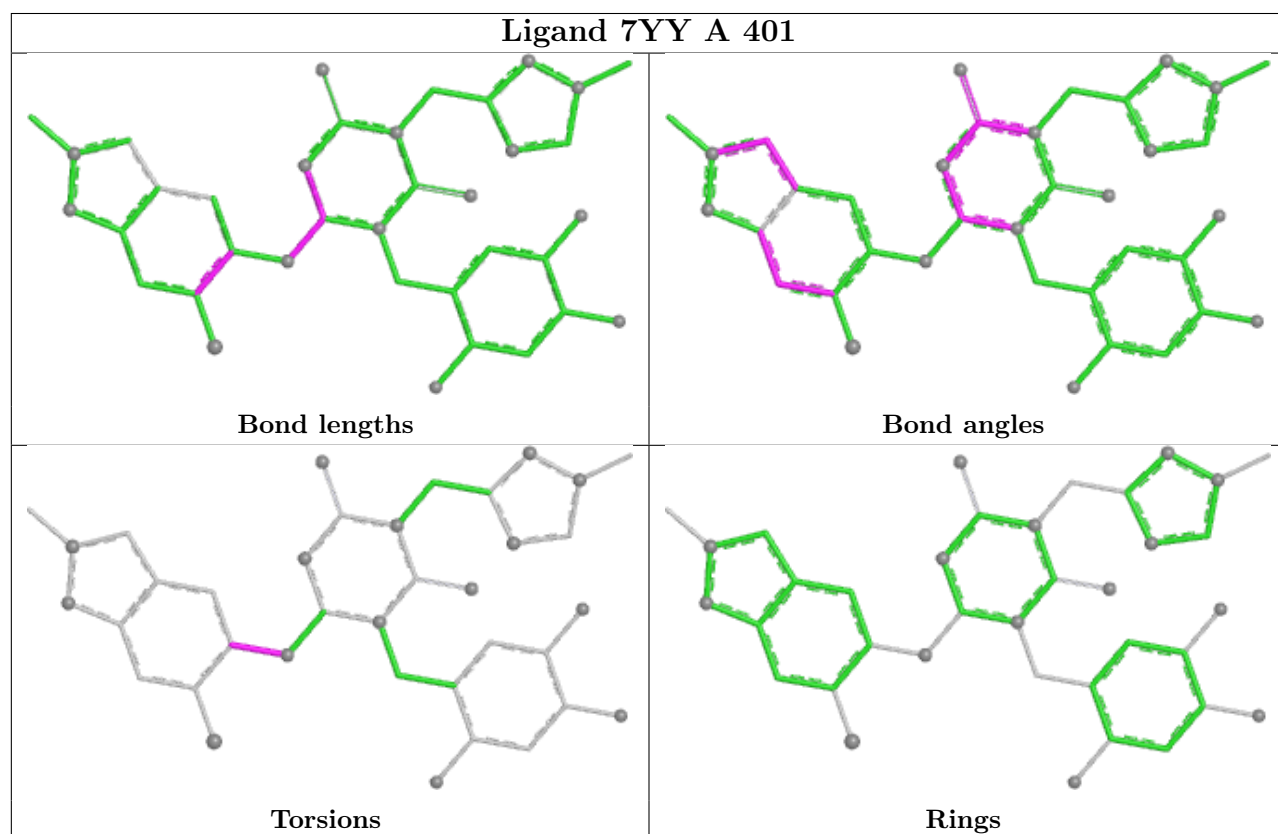
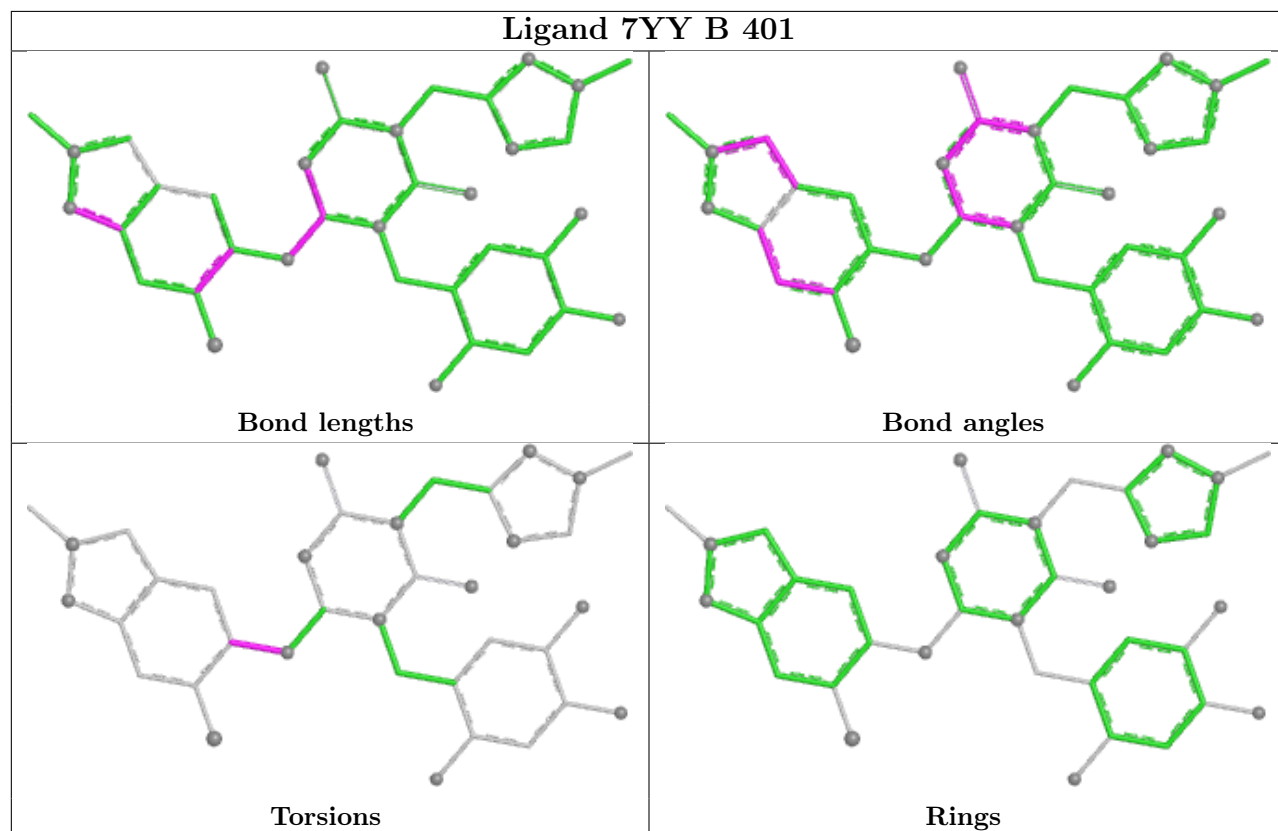
There are no ring outliers.

2 monomers are involved in 3 short contacts:

Mol	Chain	Res	Type	Clashes	Symm-Clashes
2	B	401	7YY	2	0
2	A	401	7YY	1	0

The following is a two-dimensional graphical depiction of Mogul quality analysis of bond lengths, bond angles, torsion angles, and ring geometry for all instances of the Ligand of Interest. In addition, ligands with molecular weight > 250 and outliers as shown on the validation Tables will also be included. For torsion angles, if less than 5% of the Mogul distribution of torsion angles is within 10 degrees of the torsion angle in question, then that torsion angle is considered an outlier. Any bond that is central to one or more torsion angles identified as an outlier by Mogul will be highlighted in the graph. For rings, the root-mean-square deviation (RMSD) between the ring in question and similar rings identified by Mogul is calculated over all ring torsion angles. If the average RMSD is greater than 60 degrees and the minimal RMSD between the ring in question and

any Mogul-identified rings is also greater than 60 degrees, then that ring is considered an outlier. The outliers are highlighted in purple. The color gray indicates Mogul did not find sufficient equivalents in the CSD to analyse the geometry.



5.7 Other polymers

There are no such residues in this entry.

5.8 Polymer linkage issues

There are no chain breaks in this entry.

6 Fit of model and data

6.1 Protein, DNA and RNA chains

In the following table, the column labelled ‘#RSRZ> 2’ contains the number (and percentage) of RSRZ outliers, followed by percent RSRZ outliers for the chain as percentile scores relative to all X-ray entries and entries of similar resolution. The OWAB column contains the minimum, median, 95th percentile and maximum values of the occupancy-weighted average B-factor per residue. The column labelled ‘Q< 0.9’ lists the number of (and percentage) of residues with an average occupancy less than 0.9.

Mol	Chain	Analysed	<RSRZ>	#RSRZ>2	OWAB(Å ²)	Q<0.9
1	A	301/373 (80%)	1.24	66 (21%) 2 1	25, 41, 69, 94	0
1	B	301/373 (80%)	1.17	62 (20%) 2 2	24, 41, 67, 95	0
All	All	602/746 (80%)	1.21	128 (21%) 2 1	24, 41, 69, 95	0

All (128) RSRZ outliers are listed below:

Mol	Chain	Res	Type	RSRZ
1	A	301	SER	7.4
1	A	155	ASP	7.3
1	A	278	GLY	7.1
1	A	154	TYR	6.7
1	A	47	GLU	6.3
1	B	191	ALA	6.2
1	B	1	SER	5.6
1	B	223	PHE	5.4
1	A	191	ALA	5.1
1	A	79	GLY	4.9
1	B	64	HIS	4.8
1	A	59	ILE	4.6
1	A	71	GLY	4.3
1	B	233	VAL	4.3
1	B	255	ALA	4.3
1	A	283	GLY	4.3
1	B	73	VAL	4.3
1	B	154	TYR	4.3
1	B	123	SER	4.2
1	B	153	ASP	4.2
1	A	45	THR	4.1
1	B	195	GLY	3.8
1	A	153	ASP	3.8
1	A	43	ILE	3.7

Continued on next page...

Continued from previous page...

Mol	Chain	Res	Type	RSRZ
1	B	24	THR	3.7
1	A	277	ASN	3.7
1	A	223	PHE	3.7
1	B	46	SER	3.6
1	B	190	THR	3.5
1	A	272	LEU	3.4
1	B	62	SER	3.4
1	A	244	GLN	3.4
1	B	67	LEU	3.4
1	B	76	ARG	3.4
1	A	73	VAL	3.3
1	A	64	HIS	3.3
1	A	232	LEU	3.3
1	B	47	GLU	3.3
1	B	275	GLY	3.2
1	A	55	GLU	3.2
1	A	62	SER	3.2
1	A	50	LEU	3.2
1	B	45	THR	3.2
1	B	262	LEU	3.1
1	B	81	SER	3.1
1	B	301	SER	3.1
1	A	190	THR	3.1
1	B	72	ASN	3.1
1	B	49	MET	3.0
1	A	58	LEU	3.0
1	A	209	TYR	2.9
1	B	277	ASN	2.9
1	A	215	GLY	2.9
1	B	59	ILE	2.9
1	A	255	ALA	2.9
1	B	278	GLY	2.9
1	B	91	VAL	2.9
1	B	224	THR	2.9
1	A	121	SER	2.9
1	B	237	TYR	2.8
1	B	55	GLU	2.8
1	B	297	VAL	2.8
1	A	243	THR	2.8
1	A	128	CYS	2.8
1	B	155	ASP	2.8
1	A	24	THR	2.8

Continued on next page...

Continued from previous page...

Mol	Chain	Res	Type	RSRZ
1	B	231	ASN	2.7
1	A	216	ASP	2.7
1	A	234	ALA	2.7
1	A	224	THR	2.7
1	B	50	LEU	2.7
1	A	63	ASN	2.7
1	A	77	VAL	2.7
1	A	294	PHE	2.6
1	A	53	ASN	2.6
1	A	48	ASP	2.6
1	A	44	CYS	2.6
1	B	201	THR	2.6
1	B	226	THR	2.6
1	A	184	PRO	2.6
1	A	199	THR	2.5
1	A	96	PRO	2.5
1	B	158	SER	2.5
1	A	46	SER	2.5
1	B	157	VAL	2.5
1	A	222	ARG	2.5
1	A	233	VAL	2.4
1	A	188	ARG	2.4
1	A	195	GLY	2.3
1	B	48	ASP	2.3
1	A	76	ARG	2.3
1	A	91	VAL	2.3
1	B	80	HIS	2.3
1	B	93	THR	2.3
1	B	283	GLY	2.3
1	A	298	ARG	2.3
1	B	102	LYS	2.3
1	A	78	ILE	2.3
1	A	100	LYS	2.3
1	A	249	ILE	2.2
1	B	51	ASN	2.2
1	B	57	LEU	2.2
1	B	270	GLU	2.2
1	B	25	THR	2.2
1	B	77	VAL	2.2
1	B	232	LEU	2.2
1	B	268	LEU	2.2
1	A	49	MET	2.2

Continued on next page...

Continued from previous page...

Mol	Chain	Res	Type	RSRZ
1	B	228	ASN	2.2
1	A	293	PRO	2.1
1	B	245	ASP	2.2
1	A	261	VAL	2.1
1	B	128	CYS	2.1
1	A	61	LYS	2.1
1	B	234	ALA	2.1
1	A	248	ASP	2.1
1	B	216	ASP	2.1
1	B	230	PHE	2.1
1	A	81	SER	2.1
1	B	271	LEU	2.1
1	B	273	GLN	2.1
1	B	218	TRP	2.1
1	A	274	ASN	2.0
1	A	142	ASN	2.0
1	B	65	ASN	2.0
1	A	107	GLN	2.0
1	A	279	ARG	2.0
1	A	26	THR	2.0

6.2 Non-standard residues in protein, DNA, RNA chains [i](#)

There are no non-standard protein/DNA/RNA residues in this entry.

6.3 Carbohydrates [i](#)

There are no oligosaccharides in this entry.

6.4 Ligands [i](#)

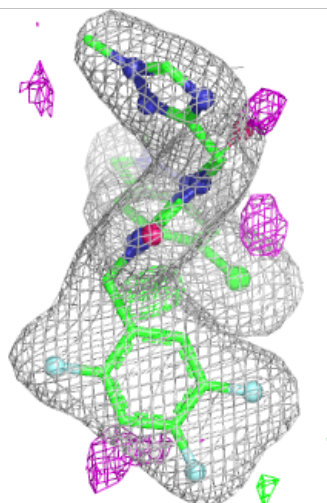
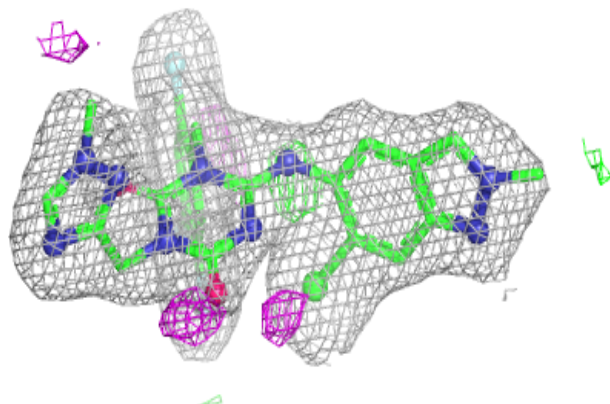
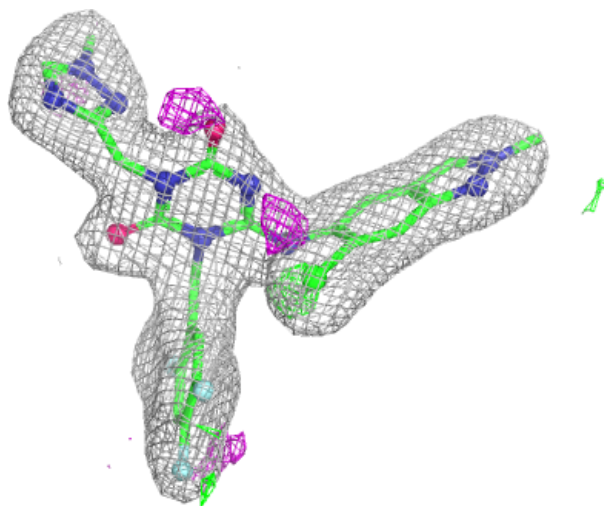
In the following table, the Atoms column lists the number of modelled atoms in the group and the number defined in the chemical component dictionary. The B-factors column lists the minimum, median, 95th percentile and maximum values of B factors of atoms in the group. The column labelled 'Q< 0.9' lists the number of atoms with occupancy less than 0.9.

Mol	Type	Chain	Res	Atoms	RSCC	RSR	B-factors(Å ²)	Q<0.9
2	7YY	A	401	37/37	0.93	0.11	31,38,44,51	0
2	7YY	B	401	37/37	0.95	0.08	27,33,41,49	0

The following is a graphical depiction of the model fit to experimental electron density of all instances of the Ligand of Interest. In addition, ligands with molecular weight > 250 and outliers as shown on the geometry validation Tables will also be included. Each fit is shown from different orientation to approximate a three-dimensional view.

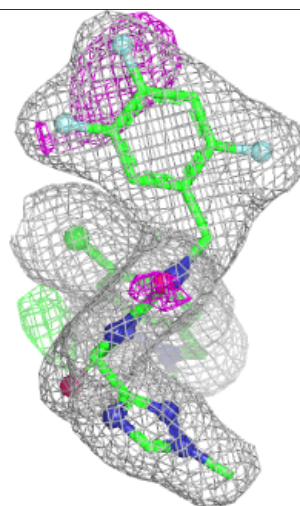
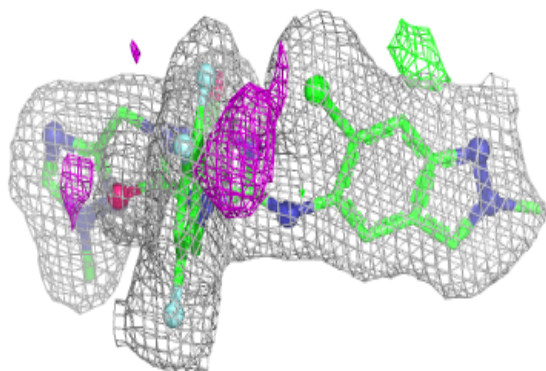
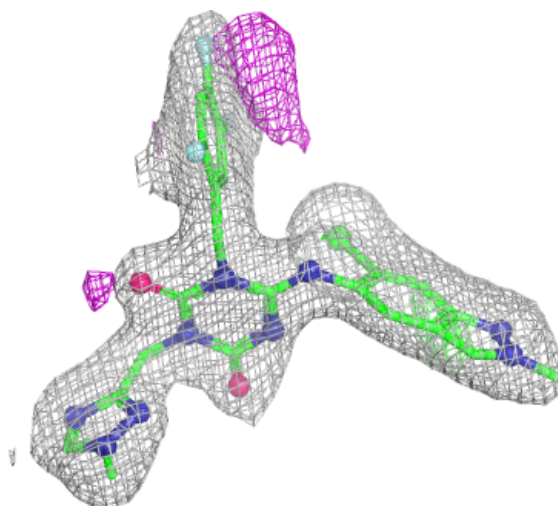
Electron density around 7YY A 401:

$2mF_o-DF_c$ (at 0.7 rmsd) in gray
 mF_o-DF_c (at 3 rmsd) in purple (negative)
and green (positive)



Electron density around 7YY B 401:

$2mF_o-DF_c$ (at 0.7 rmsd) in gray
 mF_o-DF_c (at 3 rmsd) in purple (negative)
and green (positive)



6.5 Other polymers ⓘ

There are no such residues in this entry.