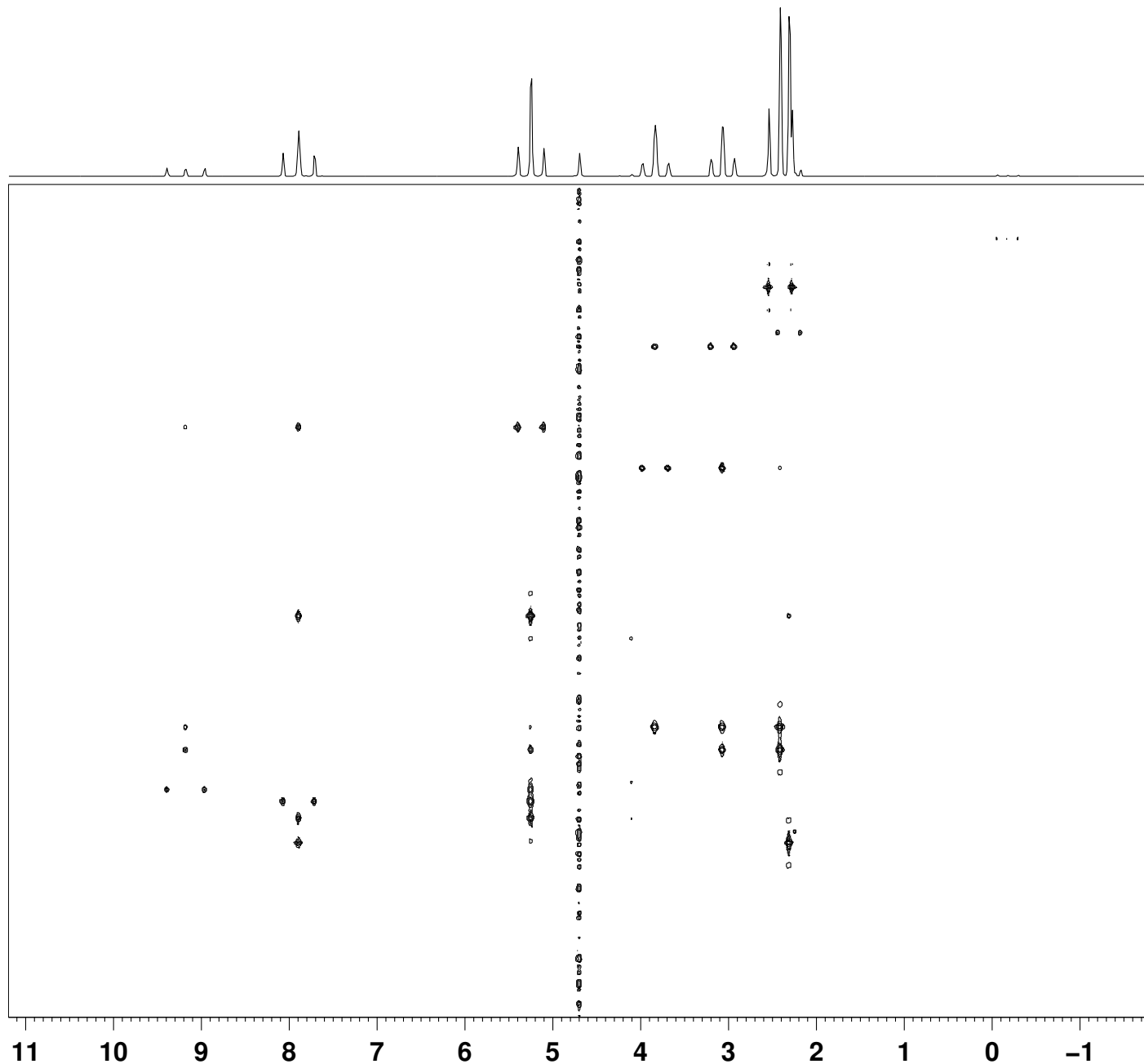
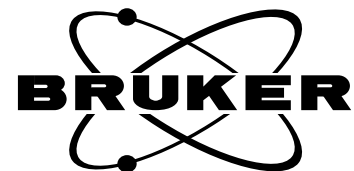


CQ-17653-D2O-HMBC-271009-298 K-500 MHz
 HMBC-mmcd-clem D2O /opt/topspin ravi {1 C11 - 135}



NAME CQ-17653-D2O-271009
 EXPNO 7
 PROCNO 1
 Date_ 20091031
 Time 11.02
 INSTRUM spect
 PROBHD 5 mm CPTXO 13C
 PULPROG hmbcgpndqf
 TD 4096
 SOLVENT D2O
 NS 8
 DS 32
 SWH 6493.506 Hz
 FIDRES 1.585329 Hz
 AQ 0.3154420 sec
 RG 28.5
 DW 77.000 usec
 DE 30.00 usec
 TE 298.0 K
 CNST13 8.0000000
 D0 0.00000300 sec
 D1 1.50000000 sec
 D6 0.06250000 sec
 D16 0.00020000 sec
 INO 0.00001685 sec

==== CHANNEL f1 =====
 NUC1 1H
 P1 15.70 usec
 P2 31.40 usec
 PL1 0.90 dB
 PL1W 21.64242172 W
 SFO1 499.8423492 MHz

==== CHANNEL f2 =====
 NUC2 13C
 P3 10.00 usec
 PL2 3.00 dB
 PL2W 36.25705338 W
 SFO2 125.6974365 MHz

==== GRADIENT CHANNEL =====
 GPNAM1 SINE.100
 GPNAM2 SINE.100
 GPNAM3 SINE.100
 GPZ1 50.00 %
 GPZ2 30.00 %
 GPZ3 40.10 %
 P16 1000.00 usec
 ND0 2
 TD 256
 SFO1 125.6974 MHz
 FIDRES 115.877327 Hz
 SW 236.000 ppm
 FhMODE QF
 SI 1024
 SF 499.8400000 MHz
 WDW SINE
 SSB 0
 LB 0.00 Hz
 GB 0
 PC 1.40
 SI 1024
 MC2 QF
 SF 125.6848680 MHz
 WDW SINE
 SSB 0
 LB 0.00 Hz
 GB 0